

---

# PARTS CATALOG

---



## Diesel Engine Pump

Model

**PTD406**

**PTD306T**

 **FUJI HEAVY INDUSTRIES LTD.**

---

ISSUE EMD-PP0644

---

# HOW TO USE THIS PARTS CATALOG

## 1. Reference numbers with an asterisk

Reference numbers marked with an asterisk indicate that the particular part is available only as a complete set or assembly.

### Example :

If the reference number is marked with an asterisk and the description of the part states that certain items are included, this means that those included items cannot be ordered separately and must be purchased as a complete assembly.

## 2. Description of interchangeability and execution columns

### Example : Interchangeability column



Items interchangeable between the new and old parts.



Items not interchangeable between the new and old parts.



Items conditionally interchangeable between the new and old parts which are subject to the description in the execution column.

### Example : Execution column

- 010000  
010001 -

For use for Serial No. up to 010000.

Serial No.

For use for Serial No. from 010001.

### Example : Interchangeable

| Part Number                | ↓ | Execution            | Explanation                                                                                                                                                                                                                              |
|----------------------------|---|----------------------|------------------------------------------------------------------------------------------------------------------------------------------------------------------------------------------------------------------------------------------|
| Part B<br>Part A           |   | 020000 -             | This indicates that Part A changed to Part B for pumps with serial numbers from 20000, and that they are interchangeable.                                                                                                                |
| Part C<br>Part B<br>Part A |   | 020000 -<br>015000 - | This indicates that Part A changed to Part B for pumps with serial numbers from 15000, and that they are not interchangeable. Also, Part B changed to Part C for pumps with serial numbers from 20000 and that they are interchangeable. |
| Part A                     |   | 020000 -             | This indicates that Part A is a new part for pumps with serial numbers from 20000.                                                                                                                                                       |
| Part B                     |   | - 030000             | This indicates that Part B is no longer used for pumps with serial numbers from 30001.                                                                                                                                                   |
| Part B<br>Part A           |   | 020000 -             | This indicates that Part A changed to Part B for pumps with serial numbers from 20000, and that they are conditionally interchangeable. (See NOTE described at the end of the section.)                                                  |

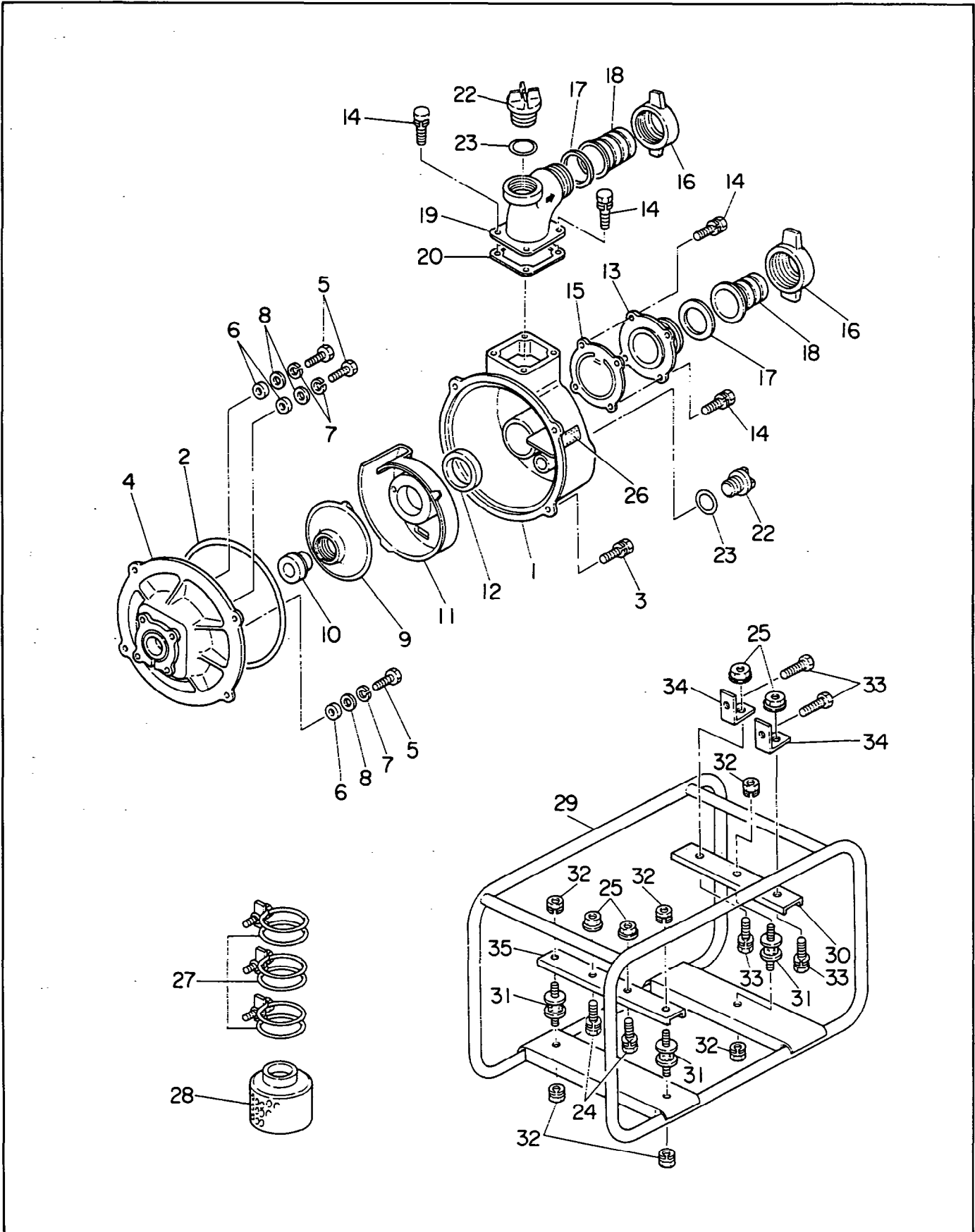
**3. The contents of this parts catalog are subject to revision without notice.**  
TO INSURE PROMPT AND ACCURATE SERVICE, ALSO THE FOLLOWING INFORMATION MUST BE GIVEN.

1. State exactly the quantity of each part and its part number.
2. Clearly state whether parts are to be shipped by express, freight or parcel post.
3. State the exact mailing address.

## CONTENTS

|                                                             | <b>Page</b> |
|-------------------------------------------------------------|-------------|
| <b>FIG. 1A PUMP (PTD406)</b> .....                          | <b>1</b>    |
| <b>FIG. 1B PUMP (PTD306T)</b> .....                         | <b>3</b>    |
| <b>FIG. 2 CRANKCASE GROUP</b> .....                         | <b>5</b>    |
| <b>FIG. 3 CYLINDER HEAD GROUP</b> .....                     | <b>7</b>    |
| <b>FIG. 4 CRANKSHAFT and PISTON GROUP</b> .....             | <b>9</b>    |
| <b>FIG. 5 CAMSHAFT and VALVE ROCKER GROUP</b> .....         | <b>11</b>   |
| <b>FIG. 6 AIR CLEANER and MUFFLER GROUP</b> .....           | <b>13</b>   |
| <b>FIG. 7 GOVERNOR OPERATION GROUP</b> .....                | <b>15</b>   |
| <b>FIG. 8 BLOWER HOUSING and RECOIL STARTER GROUP</b> ..... | <b>17</b>   |
| <b>FIG. 9 FUEL TANK GROUP</b> .....                         | <b>19</b>   |
| <b>FIG. 10 FUEL SYSTEM GROUP</b> .....                      | <b>21</b>   |
| <b>FIG. 11 ACCESSORIES GROUP</b> .....                      | <b>23</b>   |

FIG. 1A PUMP (PTD406)



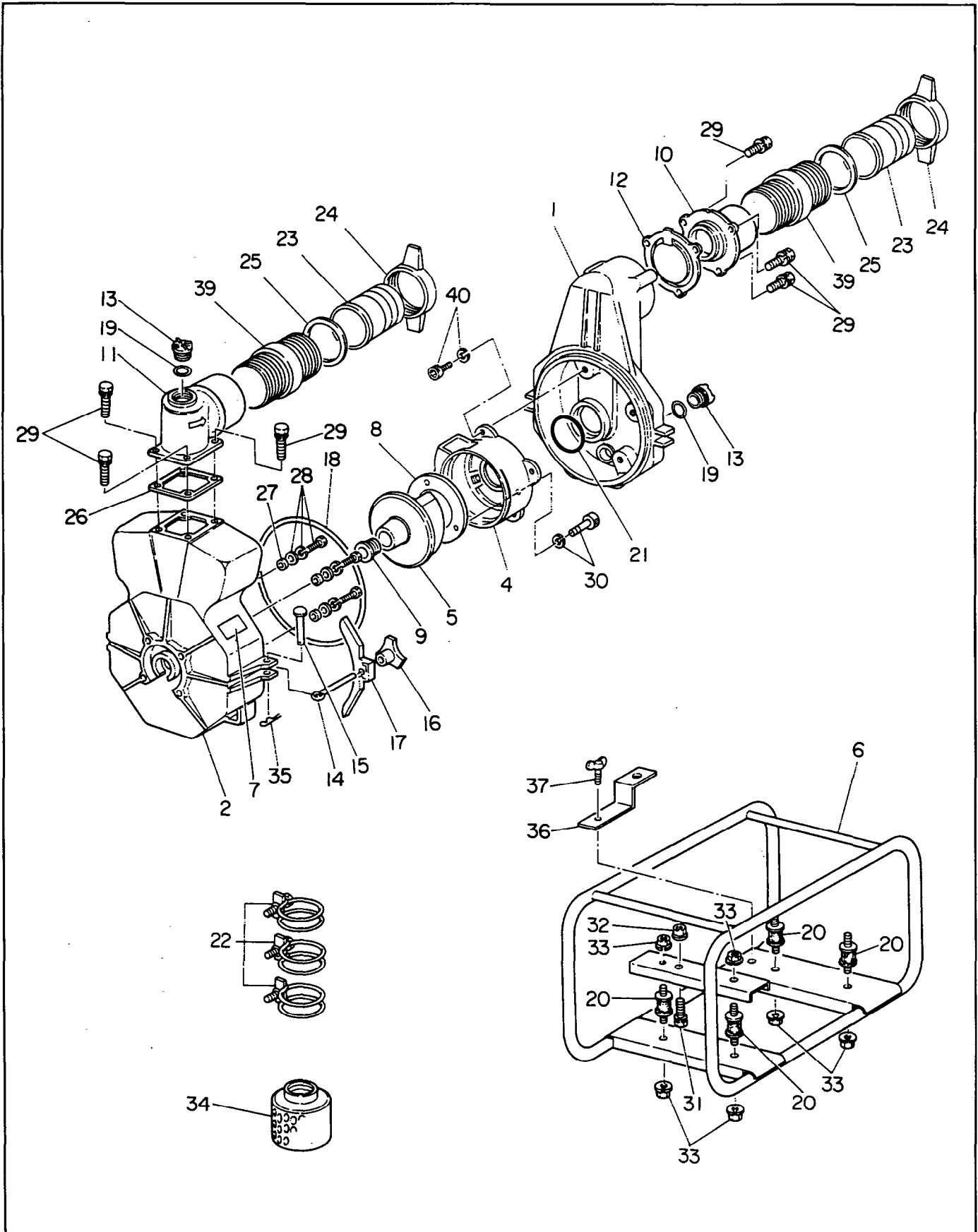
**FIG. 1A PUMP (PTD406)**

Interchangeability

| Ref. No. | Parts Number | Description                    | Q'ty | Execution |
|----------|--------------|--------------------------------|------|-----------|
| 1        | 480-10010-01 | CASING                         | 1    |           |
| 2        | 480-10010-02 | PACKING, casing                | 1    |           |
| 3        | 001-14103-00 | BOLT and WASHER ASS'Y (M10x30) | 4    |           |
| 4        | 480-10010-04 | CASING COVER                   | 1    |           |
| 5        | 480-05010-05 | BOLT (M8x48)                   | 4    |           |
| 6        | 480-05010-06 | SEAL PACKING                   | 4    |           |
| 7        | 003-20080-00 | SPRING WASHER (M8)             | 4    |           |
| 8        | 003-11080-00 | WASHER (M8)                    | 4    |           |
| 9        | 480-10010-09 | IMPELLER                       | 1    |           |
| 10       | 480-10010-10 | MECHANICAL SEAL                | 1    |           |
| 11       | 480-10010-11 | INNER CASING                   | 1    |           |
| 12       | 480-10010-12 | PACKING, inner casing          | 1    |           |
| 13       | 480-10010-13 | SUCTION FLANGE                 | 1    |           |
| 14       | 001-14103-00 | BOLT and WASHER ASS'Y (M10x30) | 8    |           |
| 15       | 481-00000-97 | CHECK VALVE                    | 1    |           |
| 16       | 480-10010-16 | COUPLING                       | 2    |           |
| 17       | 480-10010-17 | PACKING, coupling              | 2    |           |
| 18       | 480-10010-18 | NIPPLE                         | 2    |           |
| 19       | 480-10010-19 | DELIVERY FLANGE                | 1    |           |
| 20       | 480-10010-20 | PACKING, delivery flange       | 1    |           |
| 22       | 480-05010-21 | PLUG                           | 2    |           |
| 23       | 480-05010-22 | PACKING, plug                  | 2    |           |
| 24       | 001-13105-50 | BOLT and WASHER ASS'Y (M10x55) | 2    |           |
| 25       | 002-38100-00 | FLANGE NUT (M10)               | 4    |           |
| 26       | 482-00054-03 | LABEL, pump name               | 1    |           |
| 27       | 480-10010-28 | HOSE BAND                      | 3    |           |
| 28       | 480-10010-29 | STRAINER                       | 1    |           |
| 29       | 481-00000-98 | FRAME                          | 1    |           |
| 30       | 481-00000-99 | BASE, pump side                | 1    |           |
| 31       | 480-08210-19 | CUSHION RUBBER                 | 3    |           |
| 32       | 480-10010-24 | NUT and WASHER ASS'Y (M8)      | 6    |           |
| 33       | 001-14102-00 | BOLT and WASHER ASS'Y (M10x20) | 4    |           |
| 34       | 481-00001-00 | BRACKET                        | 2    |           |
| 35       | 481-00001-01 | BASE, engine side              | 1    |           |
|          |              |                                |      |           |
|          |              |                                |      |           |
|          |              |                                |      |           |
|          |              |                                |      |           |
|          |              |                                |      |           |
|          |              |                                |      |           |
|          |              |                                |      |           |
|          |              |                                |      |           |
|          |              |                                |      |           |
|          |              |                                |      |           |
|          |              |                                |      |           |
|          |              |                                |      |           |
|          |              |                                |      |           |
|          |              |                                |      |           |
|          |              |                                |      |           |
|          |              |                                |      |           |
|          |              |                                |      |           |
|          |              |                                |      |           |
|          |              |                                |      |           |
|          |              |                                |      |           |
|          |              |                                |      |           |
|          |              |                                |      |           |
|          |              |                                |      |           |
|          |              |                                |      |           |
|          |              |                                |      |           |
|          |              |                                |      |           |
|          |              |                                |      |           |
|          |              |                                |      |           |
|          |              |                                |      |           |
|          |              |                                |      |           |
|          |              |                                |      |           |
|          |              |                                |      |           |
|          |              |                                |      |           |
|          |              |                                |      |           |
|          |              |                                |      |           |
|          |              |                                |      |           |
|          |              |                                |      |           |

When ordering parts : Always give the Model, Specification and Serial Number of Pump.

FIG. 1B PUMP (PTD306T)



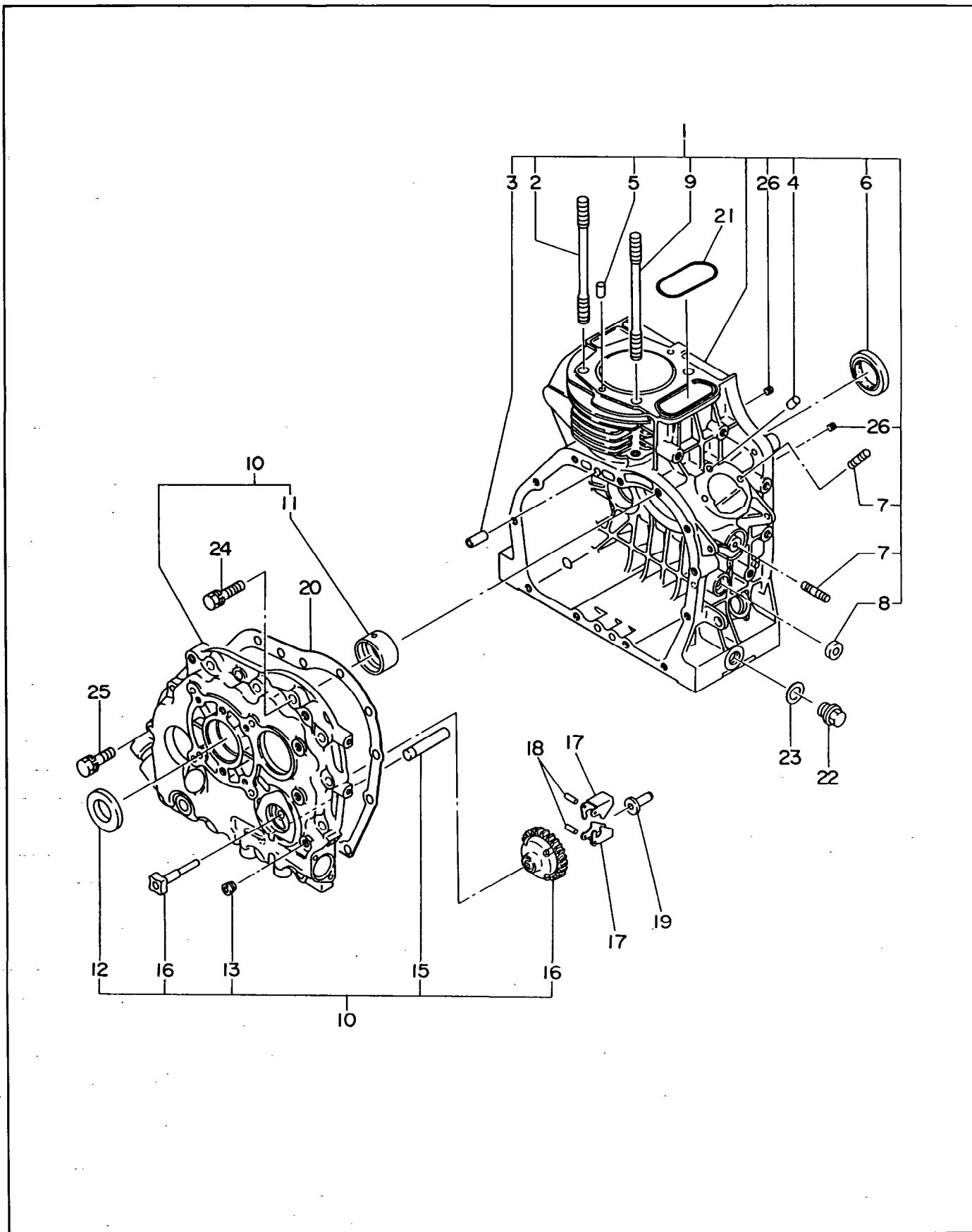
**FIG. 1B PUMP (PTD306T)**

Interchangeability

| Ref. No. | Parts Number | Description                    | Q'ty | Execution |
|----------|--------------|--------------------------------|------|-----------|
| 1        | 481-00000-68 | CASING                         | 1    |           |
| 2        | 480-08210-02 | CASING COVER                   | 1    |           |
| 4        | 481-00001-03 | INNER CASING                   | 1    |           |
| 5        | 481-00001-04 | IMPELLER                       | 1    |           |
| 6        | 481-00001-05 | FRAME                          | 1    |           |
| 7        | 482-00045-03 | LABEL, pump name               | 1    |           |
| 8        | 481-00000-70 | LINER                          | 1    |           |
| 9        | 480-08210-08 | MECHANICAL SEAL                | 1    |           |
| 10       | 481-00000-71 | SUCTION FLANGE                 | 1    |           |
| 11       | 481-00000-72 | DELIVERY FLANGE                | 1    |           |
| 12       | 481-00000-73 | CHECK VALVE                    | 1    |           |
| 13       | 480-08210-12 | PLUG                           | 2    |           |
| 14       | 480-08210-13 | COVER BOLT                     | 2    |           |
| 15       | 480-08210-14 | RIVET                          | 2    |           |
| 16       | 480-08210-15 | KNOB                           | 2    |           |
| 17       | 480-08210-16 | CASING COVER HOLDER            | 2    |           |
| 18       | 480-08210-17 | PACKING, casing                | 1    |           |
| 19       | 480-08210-18 | "O" RING                       | 2    |           |
| 20       | 480-08210-19 | CUSHION RUBBER                 | 4    |           |
| 21       | 480-08210-20 | "O" RING, inner casing         | 1    |           |
| 22       | 480-08010-28 | HOSE BAND                      | 3    |           |
| 23       | 480-08210-22 | NIPPLE (AL)                    | 2    |           |
| 24       | 480-08210-23 | COUPLING (AL)                  | 2    |           |
| 25       | 480-08010-17 | PACKING, nipple                | 2    |           |
| 26       | 480-08010-20 | PACKING, delivery flange       | 1    |           |
| 27       | 480-05010-06 | SEAL PACKING                   | 4    |           |
| 28       | 480-05210-27 | BOLT and WASHER ASS'Y (M8x48)  | 4    |           |
| 29       | 001-14103-00 | BOLT and WASHER ASS'Y (M10x30) | 7    |           |
| 30       | 480-08210-29 | SOCKET BOLT (M6x20)            | 3    |           |
| 31       | 001-14104-50 | BOLT and WASHER ASS'Y (M10x45) | 2    |           |
| 32       | 002-38100-00 | FLANGE NUT (M10)               | 2    |           |
| 33       | 480-10010-24 | NUT and WASHER ASS'Y (M8)      | 6    |           |
| 34       | 480-08210-33 | STRAINER                       | 1    |           |
| 35       | 480-08210-34 | SPRING PIN                     | 2    |           |
| 36       | 480-05210-35 | SUPPORT                        | 1    |           |
| 37       | 480-05210-36 | WING BOLT (M6x15)              | 1    |           |
| 39       | 480-08310-30 | NIPPLE (NPTxPF)                | 2    |           |
| 40       | 480-08210-39 | SOCKET BOLT (M8x30)            | 3    |           |
|          |              |                                |      |           |
|          |              |                                |      |           |
|          |              |                                |      |           |

When ordering parts ; Always give the Model, Specification and Serial Number of Pump.

FIG. 2 CRANKCASE GROUP



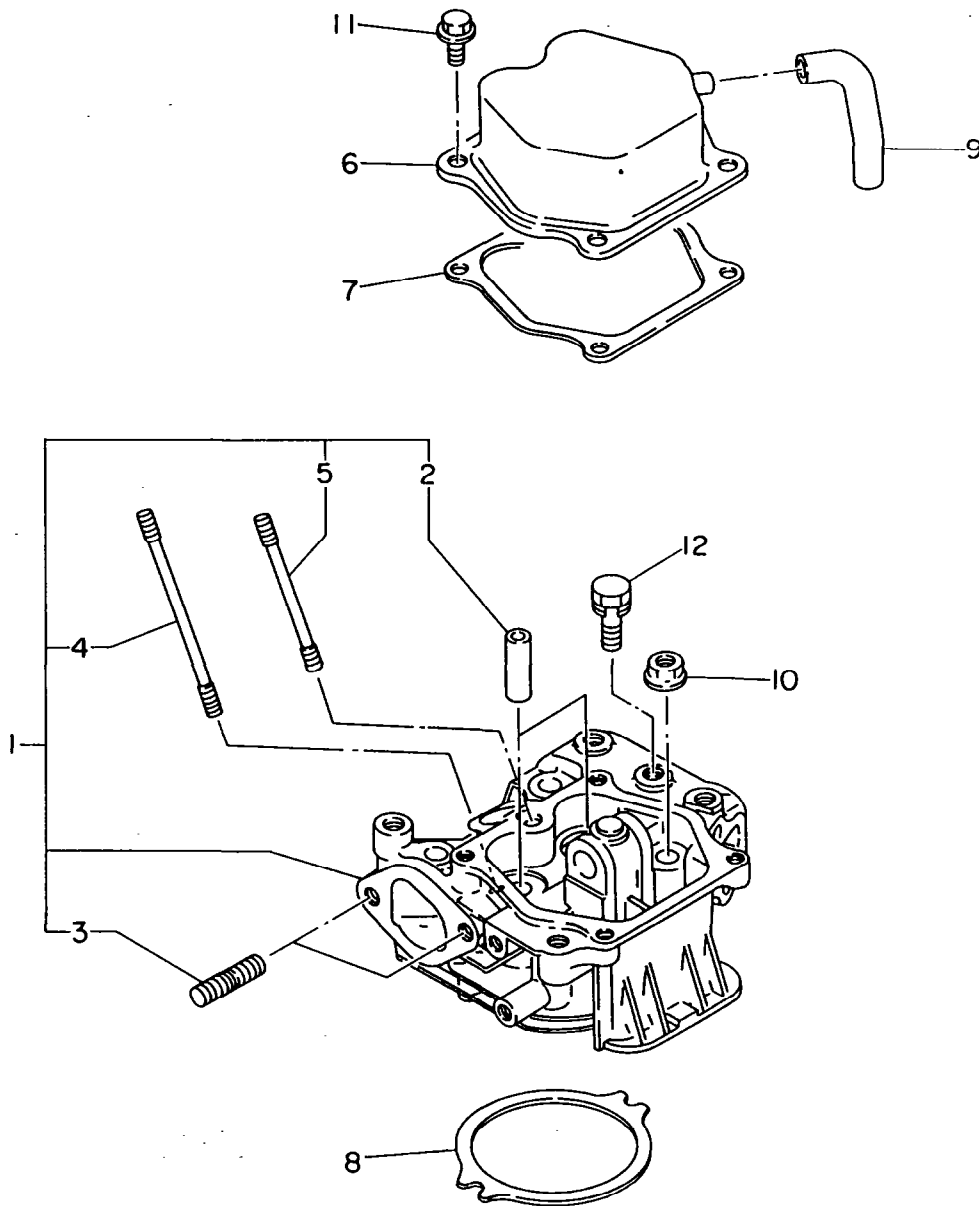


## FIG. 2 CRANKCASE GROUP

| Ref. No. | Parts Number | Description                                                              | Q'ty | Interchangeability |           |
|----------|--------------|--------------------------------------------------------------------------|------|--------------------|-----------|
|          |              |                                                                          |      |                    | Execution |
| * 1      | 244-10103-01 | CRANKCASE, compl.<br>Includes items 2 thru 9 and 26                      | 1    |                    |           |
| 2        | 243-16001-01 | TENSION BOLT                                                             | 3    |                    |           |
| 3        | 243-15001-03 | PIPE KNOCK                                                               | 2    |                    |           |
| 4        | 005-26051-20 | DOWEL PIN                                                                | 1    |                    |           |
| 5        | 031-00600-20 | DOWEL PIN                                                                | 2    |                    |           |
| 6        | 044-03000-30 | OIL SEAL                                                                 | 1    |                    |           |
| 7        | 001-37062-21 | STUD                                                                     | 3    |                    |           |
| 8        | 044-00800-30 | OIL SEAL                                                                 | 1    |                    |           |
| 9        | 243-16002-01 | TENSION BOLT                                                             | 1    |                    |           |
| *10      | 244-11002-01 | MAIN BEARING COVER, compl.<br>Includes items 11 thru 13,15 and 16        | 1    |                    |           |
| 11       | 243-15801-03 | MAIN BEARING, S.T.D                                                      | 1    |                    |           |
| 11       | 243-15802-03 | MAIN BEARING, under size 0.25mm                                          | 1    |                    |           |
| 11       | 243-15803-03 | MAIN BEARING, under size 0.50mm                                          | 1    |                    |           |
| 12       | 044-02501-60 | OIL SEAL                                                                 | 1    |                    |           |
| 13       | 212-15008-13 | BLIND PLUG                                                               | 1    |                    |           |
| 15       | 243-64201-03 | SUCTION PIPE                                                             | 1    |                    |           |
| 16       | 243-45011-07 | GOVERNOR GEAR SHAFT SET                                                  | 1    |                    |           |
| 17       | 220-41601-03 | FLYWEIGHT                                                                | 2    |                    |           |
| 18       | 030-73000-70 | PIN                                                                      | 2    |                    |           |
| 19       | 205-41901-03 | GOVERNOR SLEEVE                                                          | 1    |                    |           |
| 20       | 243-15002-03 | GASKET, bearing cover                                                    | 1    |                    |           |
| 21       | 243-15005-03 | GASKET, case                                                             | 1    |                    |           |
| 22       | 040-11400-30 | PLUG                                                                     | 2    |                    |           |
| 23       | 021-11400-20 | GASKET                                                                   | 2    |                    |           |
| 24       | 001-13083-50 | BOLT and WASHER ASS'Y                                                    | 11   |                    |           |
| 25       | 001-13084-00 | BOLT and WASHER ASS'Y                                                    | 1    |                    |           |
| 26       | 040-30600-10 | BLIND PLUG                                                               | 2    |                    |           |
| *        | 243-99001-07 | GASKET SET<br>Includes items 20,21, Fig.3-7, Fig.6-6,12,13 and Fig.10-22 | 1    |                    |           |
|          |              |                                                                          |      |                    |           |
|          |              |                                                                          |      |                    |           |
|          |              |                                                                          |      |                    |           |
|          |              |                                                                          |      |                    |           |
|          |              |                                                                          |      |                    |           |
|          |              |                                                                          |      |                    |           |
|          |              |                                                                          |      |                    |           |
|          |              |                                                                          |      |                    |           |
|          |              |                                                                          |      |                    |           |
|          |              |                                                                          |      |                    |           |
|          |              |                                                                          |      |                    |           |
|          |              |                                                                          |      |                    |           |
|          |              |                                                                          |      |                    |           |
|          |              |                                                                          |      |                    |           |

When ordering parts ; Always give the Model, Specification and Serial Number of Pump.

FIG. 3 CYLINDER HEAD GROUP

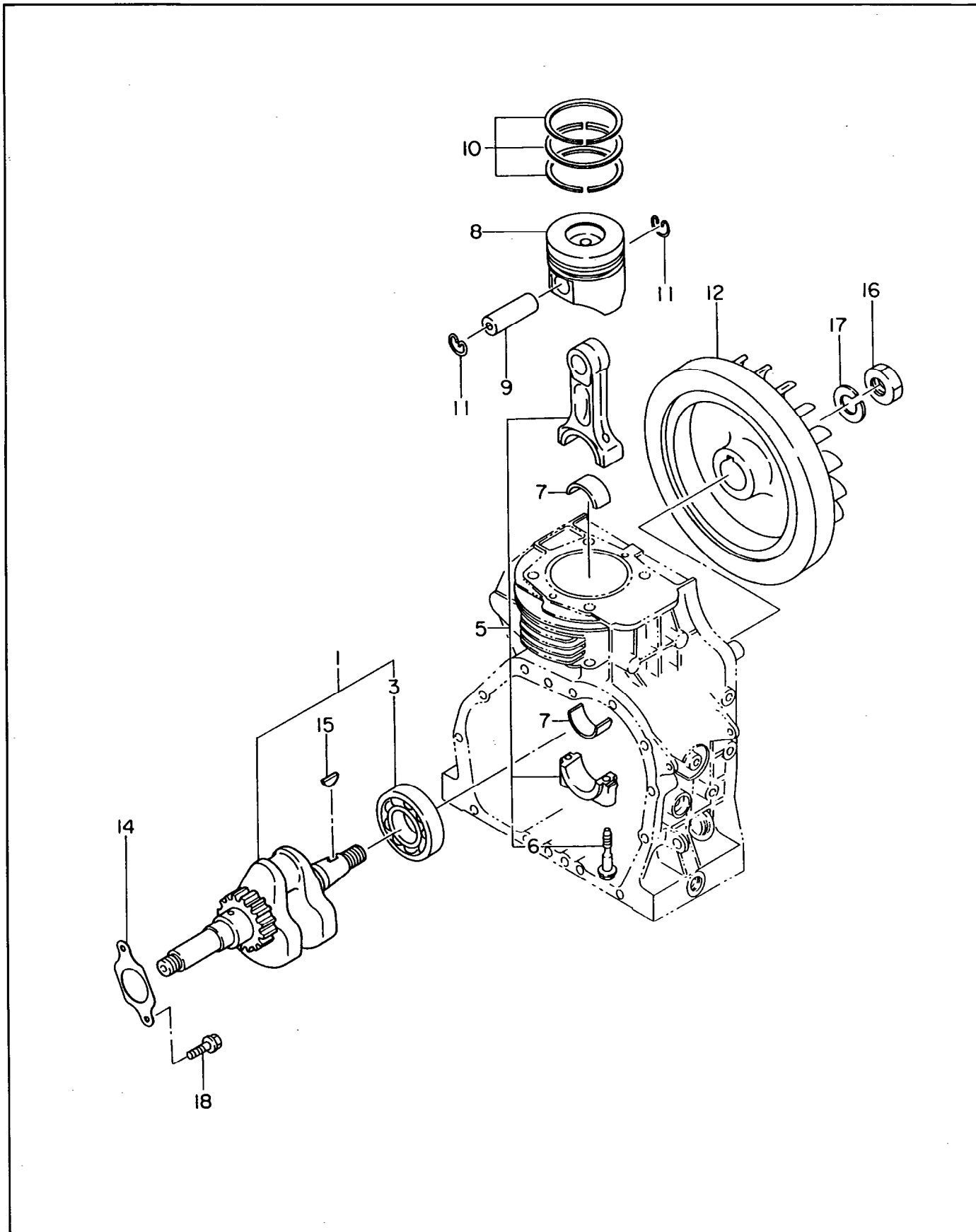


# FIG. 3 CYLINDER HEAD GROUP

|          |              |                                                  |      | Interchangeability    |           |
|----------|--------------|--------------------------------------------------|------|-----------------------|-----------|
| Ref. No. | Parts Number | Description                                      | Q'ty | ↓                     | Execution |
| * 1      | 244-13001-11 | CYLINDER HEAD, compl.<br>Includes items 2 thru 5 | 1    |                       |           |
| 2        | 243-14202-03 | VALVE GUIDE                                      | 2    |                       |           |
| 3        | 001-37082-01 | STUD                                             | 2    |                       |           |
| 4        | 010-50602-50 | STUD                                             | 1    |                       |           |
| 5        | 010-50601-50 | STUD                                             | 1    |                       |           |
| 6        | 243-17001-20 | ROCKER COVER ASS'Y                               | 1    |                       |           |
| 7        | 243-15010-03 | GASKET, rocker cover                             | 1    |                       |           |
| 8        | 244-15012-03 | SPACER, head (t=0.5)                             | 1    | select one piece only |           |
| 8        | 244-15006-03 | SPACER, head (t=0.6)                             | 1    |                       |           |
| 8        | 244-15007-03 | SPACER, head (t=0.7)                             | 1    |                       |           |
| 8        | 244-15013-03 | SPACER, head (t=0.8)                             | 1    |                       |           |
| 9        | 243-15003-03 | BREATHER PIPE                                    | 1    |                       |           |
| 10       | 018-00800-20 | FLANGE NUT                                       | 4    |                       |           |
| 11       | 011-00600-20 | FLANGE BOLT                                      | 4    |                       |           |
| 12       | 001-13081-20 | BOLT and WASHER ASS'Y                            | 1    |                       |           |
|          |              |                                                  |      |                       |           |
|          |              |                                                  |      |                       |           |
|          |              |                                                  |      |                       |           |
|          |              |                                                  |      |                       |           |
|          |              |                                                  |      |                       |           |
|          |              |                                                  |      |                       |           |
|          |              |                                                  |      |                       |           |
|          |              |                                                  |      |                       |           |
|          |              |                                                  |      |                       |           |
|          |              |                                                  |      |                       |           |
|          |              |                                                  |      |                       |           |
|          |              |                                                  |      |                       |           |
|          |              |                                                  |      |                       |           |
|          |              |                                                  |      |                       |           |
|          |              |                                                  |      |                       |           |
|          |              |                                                  |      |                       |           |
|          |              |                                                  |      |                       |           |
|          |              |                                                  |      |                       |           |
|          |              |                                                  |      |                       |           |
|          |              |                                                  |      |                       |           |
|          |              |                                                  |      |                       |           |
|          |              |                                                  |      |                       |           |
|          |              |                                                  |      |                       |           |
|          |              |                                                  |      |                       |           |

When ordering parts : Always give the Model, Specification and Serial Number of Pump.

FIG. 4 CRANKSHAFT and PISTON GROUP



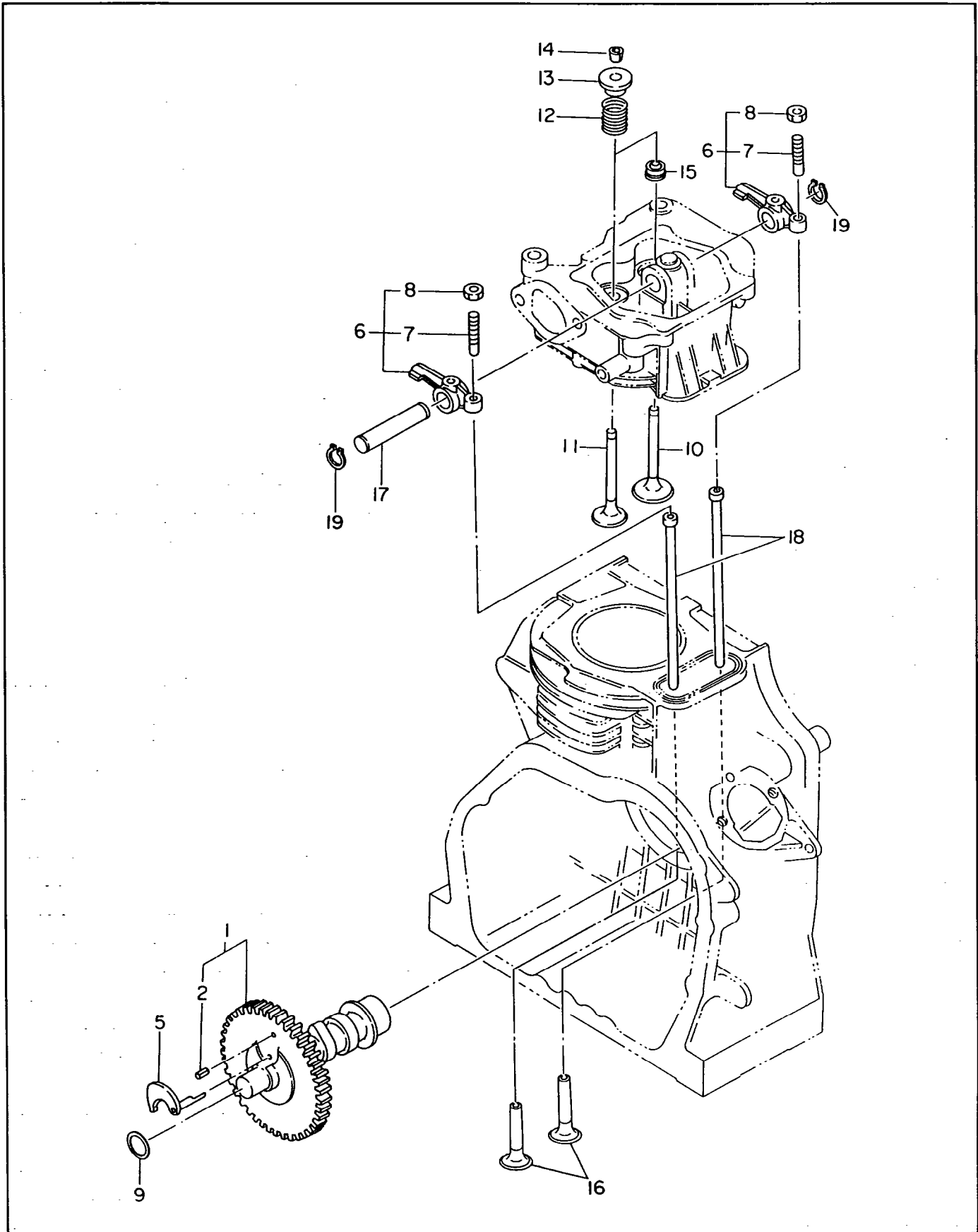
**FIG. 4 CRANKSHAFT and PISTON GROUP**

Interchangeability

| Ref. No. | Parts Number | Description                          | Qty | Execution             |
|----------|--------------|--------------------------------------|-----|-----------------------|
| * 1      | 244-20301-11 | CRANKSHAFT, compl. Includes item 3   | 1   |                       |
| 3        | 060-03500-10 | BALL BEARING                         | 1   |                       |
| * 5      | 243-22501-00 | CONNECTING ROD ASS'Y Includes item 6 | 1   |                       |
| 6        | 243-23001-03 | CONNECTING ROD BOLT                  | 2   |                       |
| 7        | 243-22801-03 | LARGE END BEARING, S.T.D             | 2   |                       |
| 7        | 243-22802-03 | LARGE END BEARING, under size 0.25mm | 2   |                       |
| 7        | 243-22803-03 | LARGE END BEARING, under size 0.50mm | 2   |                       |
| 8        | 244-23401-03 | PISTON, S.T.D                        | 1   |                       |
| 8        | 244-23402-03 | PISTON, over size 0.25mm             | 1   |                       |
| 8        | 244-23403-03 | PISTON, over size 0.50mm             | 1   |                       |
| 9        | 244-23301-03 | PISTON PIN                           | 1   |                       |
| 10       | 244-23501-07 | PISTON RING SET, S.T.D               | 1   |                       |
| 10       | 244-23502-07 | PISTON RING SET, over size 0.25mm    | 1   |                       |
| 10       | 244-23503-07 | PISTON RING SET, over size 0.50mm    | 1   |                       |
| 11       | 056-52000-30 | CLIP                                 | 2   |                       |
| 12       | 243-22410-03 | FLYWHEEL                             | 1   |                       |
| 14       | 243-25001-03 | THRUST WASHER (t=0.8)                | 1   |                       |
| 14       | 243-25002-03 | THRUST WASHER (t=1.0)                | 1   | select one piece only |
| 14       | 243-25003-03 | THRUST WASHER (t=1.2)                | 1   |                       |
| 15       | 032-30300-10 | WOODRUFF KEY                         | 1   |                       |
| 16       | 002-18180-00 | NUT                                  | 1   |                       |
| 17       | 003-20180-00 | SPRING WASHER                        | 1   |                       |
| 18       | 011-00600-10 | FLANGE BOLT                          | 2   |                       |
|          |              |                                      |     |                       |
|          |              |                                      |     |                       |
|          |              |                                      |     |                       |
|          |              |                                      |     |                       |
|          |              |                                      |     |                       |
|          |              |                                      |     |                       |
|          |              |                                      |     |                       |
|          |              |                                      |     |                       |
|          |              |                                      |     |                       |
|          |              |                                      |     |                       |
|          |              |                                      |     |                       |
|          |              |                                      |     |                       |
|          |              |                                      |     |                       |
|          |              |                                      |     |                       |
|          |              |                                      |     |                       |
|          |              |                                      |     |                       |

When ordering parts : Always give the Model, Specification and Serial Number of Pump.

FIG. 5 CAMSHAFT and VALVE ROCKER GROUP

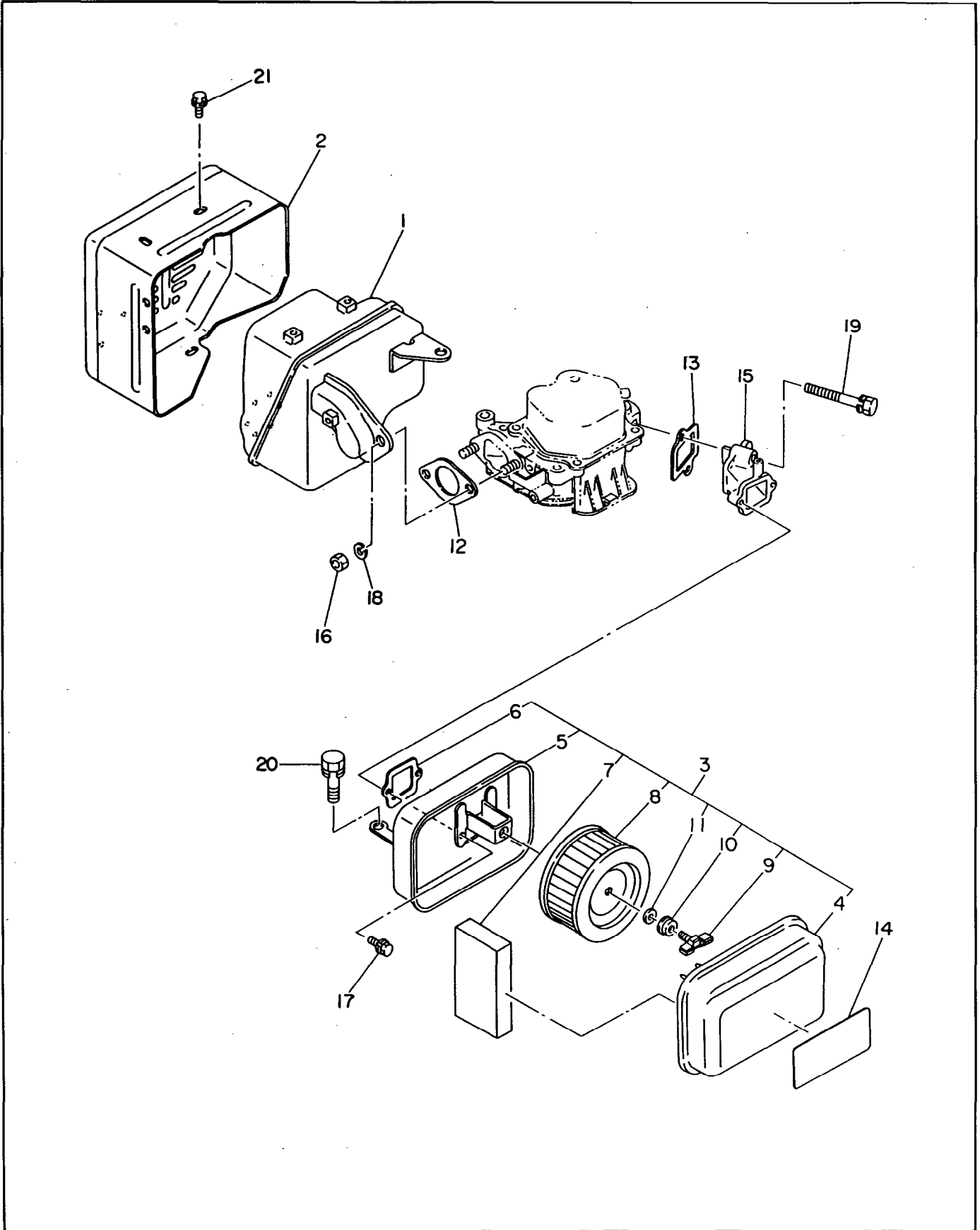


# FIG. 5 CAMSHAFT and VALVE ROCKER GROUP

| Ref. No. | Parts Number | Description                               | Q'ty | Interchangeability      |           |
|----------|--------------|-------------------------------------------|------|-------------------------|-----------|
|          |              |                                           |      |                         | Execution |
| * 1      | 243-31701-21 | CAMSHAFT, compl. Includes item 2          | 1    |                         |           |
| 2        | 005-26081-80 | DOWEL PIN                                 | 1    |                         |           |
| 5        | 243-35503-13 | RELEASE LEVER                             | 1    |                         |           |
| * 6      | 243-36001-01 | ROCKER ARM, compl. Includes items 7 and 8 | 2    |                         |           |
| 7        | 014-90600-80 | ADJUSTING SCREW                           | 2    |                         |           |
| 8        | 017-00600-80 | NUT                                       | 2    |                         |           |
| 9        | 023-01600-20 | SPACER (t=0.8)                            | 1    | ] select one piece only |           |
| 9        | 023-01600-31 | SPACER (t=1.0)                            | 1    |                         |           |
| 10       | 243-33401-03 | INTAKE VALVE                              | 1    |                         |           |
| 11       | 243-33501-03 | EXHAUST VALVE                             | 1    |                         |           |
| 12       | 243-33601-03 | VALVE SPRING                              | 2    |                         |           |
| 13       | 243-33701-03 | SPRING RETAINER                           | 2    |                         |           |
| 14       | 243-33801-03 | RETAINER LOCK                             | 4    |                         |           |
| 15       | 237-16008-01 | STEM SEAL                                 | 1    |                         |           |
| 16       | 243-33301-03 | TAPPET                                    | 2    |                         |           |
| 17       | 243-35001-03 | ROCKER SHAFT                              | 1    |                         |           |
| 18       | 243-35004-03 | PUSH ROD                                  | 2    |                         |           |
| 19       | 003-15120-00 | SNAP RING                                 | 2    |                         |           |
|          |              |                                           |      |                         |           |
|          |              |                                           |      |                         |           |
|          |              |                                           |      |                         |           |
|          |              |                                           |      |                         |           |
|          |              |                                           |      |                         |           |
|          |              |                                           |      |                         |           |
|          |              |                                           |      |                         |           |
|          |              |                                           |      |                         |           |
|          |              |                                           |      |                         |           |
|          |              |                                           |      |                         |           |
|          |              |                                           |      |                         |           |
|          |              |                                           |      |                         |           |
|          |              |                                           |      |                         |           |
|          |              |                                           |      |                         |           |
|          |              |                                           |      |                         |           |
|          |              |                                           |      |                         |           |
|          |              |                                           |      |                         |           |
|          |              |                                           |      |                         |           |

When ordering parts ; Always give the Model, Specification and Serial Number of Pump.

FIG. 6 AIR CLEANER and MUFFLER GROUP



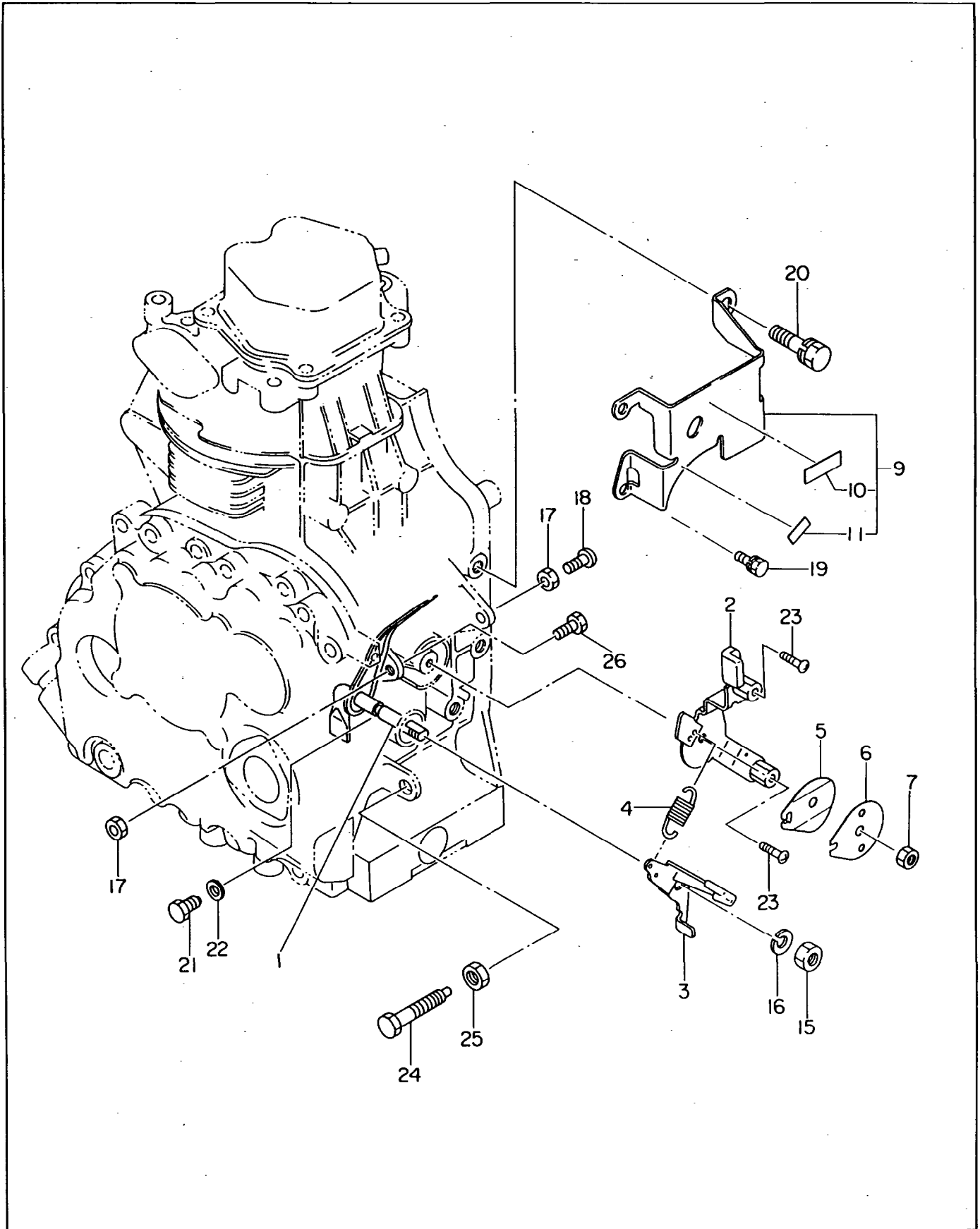


# FIG. 6 AIR CLEANER and MUFFLER GROUP

|          |              |                                            | Interchangeability |           |
|----------|--------------|--------------------------------------------|--------------------|-----------|
| Ref. No. | Parts Number | Description                                | Q'ty               | Execution |
| 1        | 243-30101-21 | MUFFLER, compl.                            | 1                  |           |
| 2        | 243-34201-01 | MUFFLER COVER                              | 1                  |           |
| * 3      | 243-32601-00 | AIR CLEANER ASS'Y Includes items 4 thru 11 | 1                  |           |
| 4        | 243-32640-08 | COVER, compl.                              | 1                  |           |
| * 5      | 243-32620-08 | BACK PLATE, compl. Includes item 6         | 1                  |           |
| 6        | 243-32651-08 | PACKING                                    | 1                  |           |
| 7        | 243-32611-08 | ELEMENT                                    | 1                  |           |
| 8        | 243-32600-08 | ELEMENT, compl.                            | 1                  |           |
| 9        | 243-32670-08 | WING BOLT                                  | 1                  |           |
| 10       | 243-32660-08 | WASHER                                     | 1                  |           |
| 11       | 243-32650-08 | PACKING                                    | 1                  |           |
| 12       | 243-35002-03 | GASKET, exhaust                            | 1                  |           |
| 13       | 243-35003-13 | GASKET, intake manifold                    | 1                  |           |
| 14       | 243-92302-03 | LABEL, air cleaner                         | 1                  |           |
| 15       | 243-33101-03 | INTAKE MANIFOLD                            | 1                  |           |
| 16       | 002-19080-00 | NUT                                        | 2                  |           |
| 17       | 001-13061-20 | BOLT and WASHER ASS'Y                      | 2                  |           |
| 18       | 003-20080-00 | SPRING WASHER                              | 2                  |           |
| 19       | 001-13083-50 | BOLT and WASHER ASS'Y                      | 2                  |           |
| 20       | 001-13081-60 | BOLT and WASHER ASS'Y                      | 1                  |           |
| 21       | 001-10061-00 | BOLT and WASHER ASS'Y                      | 4                  |           |
|          |              |                                            |                    |           |
|          |              |                                            |                    |           |
|          |              |                                            |                    |           |
|          |              |                                            |                    |           |
|          |              |                                            |                    |           |
|          |              |                                            |                    |           |
|          |              |                                            |                    |           |
|          |              |                                            |                    |           |
|          |              |                                            |                    |           |
|          |              |                                            |                    |           |
|          |              |                                            |                    |           |
|          |              |                                            |                    |           |
|          |              |                                            |                    |           |
|          |              |                                            |                    |           |
|          |              |                                            |                    |           |
|          |              |                                            |                    |           |
|          |              |                                            |                    |           |
|          |              |                                            |                    |           |
|          |              |                                            |                    |           |
|          |              |                                            |                    |           |
|          |              |                                            |                    |           |
|          |              |                                            |                    |           |
|          |              |                                            |                    |           |
|          |              |                                            |                    |           |
|          |              |                                            |                    |           |

When ordering parts ; Always give the Model, Specification and Serial Number of Pump.

FIG. 7 GOVERNOR OPERATION GROUP



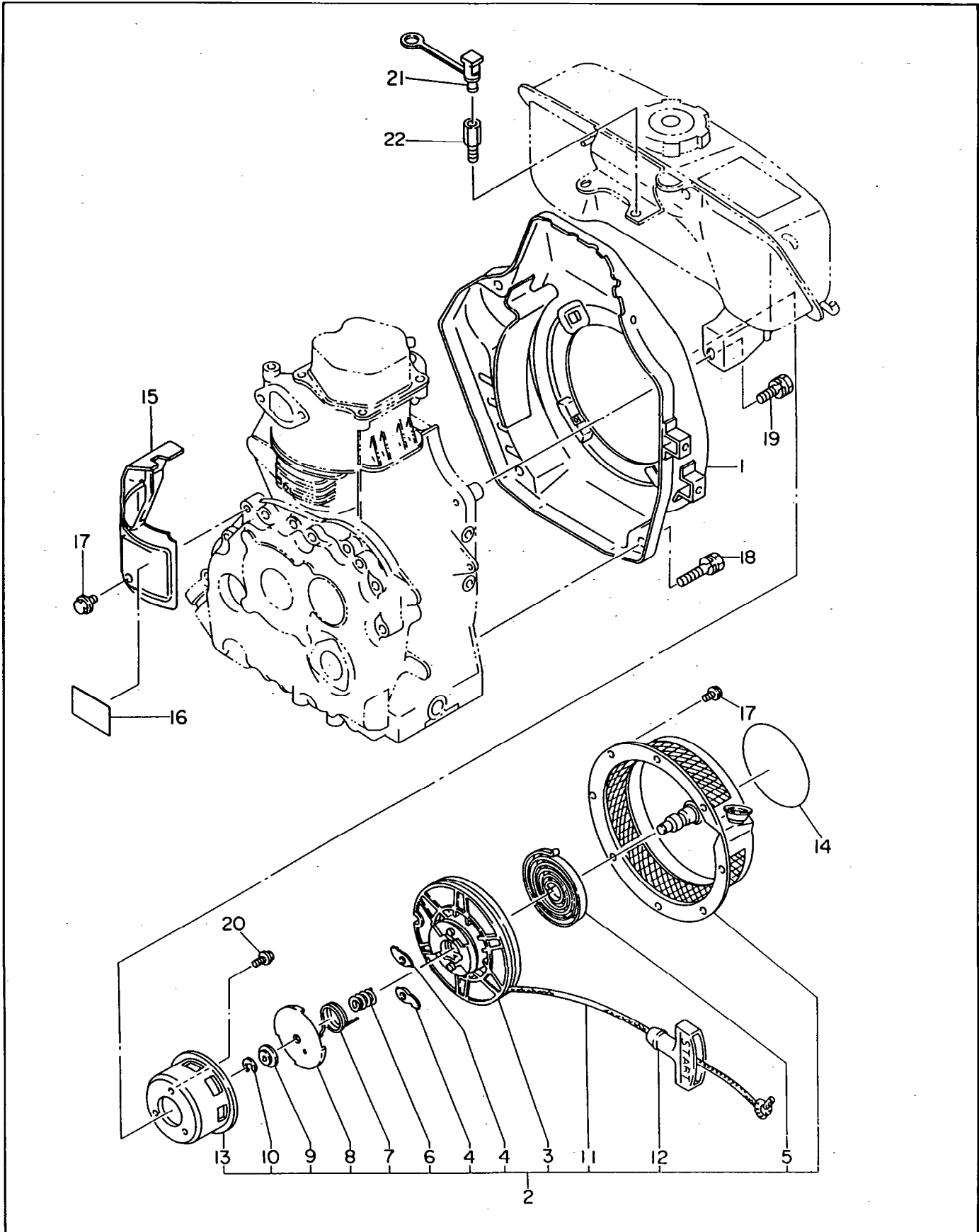
## FIG. 7 GOVERNOR OPERATION GROUP

Interchangeability

| Ref. No. | Parts Number | Description                                       | Q'ty | Execution |
|----------|--------------|---------------------------------------------------|------|-----------|
| 1        | 243-42301-02 | GOVERNOR LEVER UNIT                               | 1    |           |
| 2        | 243-43301-10 | SPEED CONTROL ASS'Y                               | 1    |           |
| 3        | 243-42902-11 | CONTROL LINK, compl.                              | 1    |           |
| 4        | 243-42502-03 | GOVERNOR SPRING                                   | 1    |           |
| 5        | 227-45002-03 | SPRING WASHER                                     | 1    |           |
| 6        | 227-43501-01 | STOP PLATE                                        | 1    |           |
| 7        | 017-60600-30 | SELF LOCK NUT                                     | 1    |           |
| *9       | 243-40166-01 | CONTROL PANEL, compl.<br>Includes items 10 and 11 | 1    |           |
| 10       | 243-92101-03 | LABEL, operation                                  | 1    |           |
| 11       | 243-92102-03 | LABEL, operation                                  | 1    |           |
| 15       | 002-18080-00 | NUT                                               | 1    |           |
| 16       | 003-20080-00 | SPRING WASHER                                     | 1    |           |
| 17       | 002-18060-00 | NUT                                               | 2    |           |
| 18       | 004-31063-00 | SCREW                                             | 1    |           |
| 19       | 001-13061-20 | BOLT and WASHER ASS'Y                             | 2    |           |
| 20       | 001-13081-60 | BOLT and WASHER ASS'Y                             | 2    |           |
| 21       | 243-45002-03 | BOLT                                              | 1    |           |
| 22       | 003-10060-00 | WASHER                                            | 1    |           |
| 24       | 243-45501-10 | SMOKE SET ASS'Y                                   | 1    |           |
| 25       | 002-24100-00 | NUT                                               | 1    |           |
| 26       | 010-30600-20 | BOLT                                              | 1    |           |
|          |              |                                                   |      |           |
|          |              |                                                   |      |           |
|          |              |                                                   |      |           |
|          |              |                                                   |      |           |
|          |              |                                                   |      |           |
|          |              |                                                   |      |           |
|          |              |                                                   |      |           |
|          |              |                                                   |      |           |
|          |              |                                                   |      |           |
|          |              |                                                   |      |           |
|          |              |                                                   |      |           |
|          |              |                                                   |      |           |
|          |              |                                                   |      |           |
|          |              |                                                   |      |           |
|          |              |                                                   |      |           |
|          |              |                                                   |      |           |
|          |              |                                                   |      |           |
|          |              |                                                   |      |           |
|          |              |                                                   |      |           |
|          |              |                                                   |      |           |
|          |              |                                                   |      |           |
|          |              |                                                   |      |           |
|          |              |                                                   |      |           |
|          |              |                                                   |      |           |

When ordering parts ; Always give the Model, Specification and Serial Number of Pump.

**FIG. 8 BLOWER HOUSING and RECOIL STARTER GROUP**



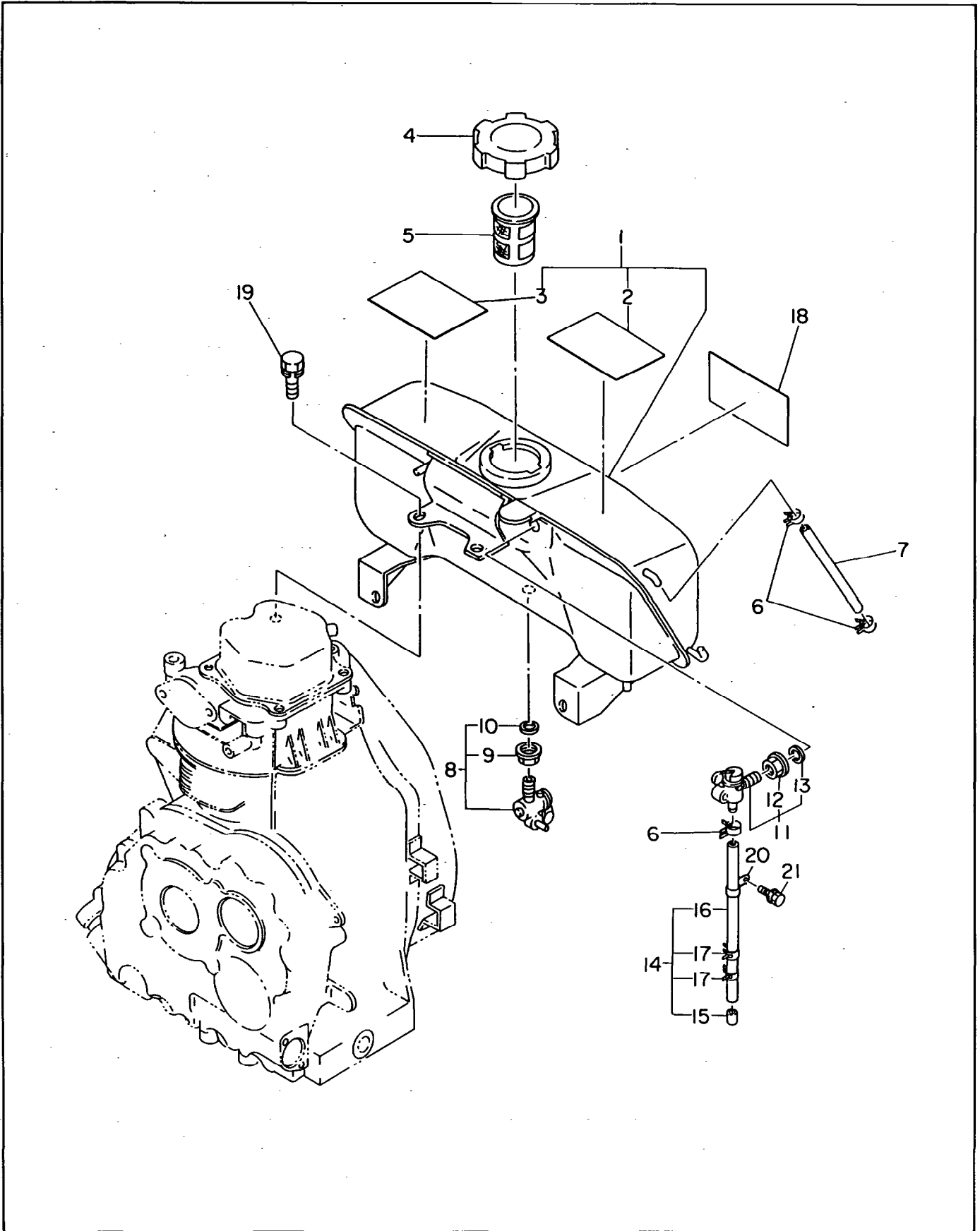
**FIG. 8 BLOWER HOUSING and RECOIL STARTER GROUP**

Interchangeability

| Ref. No. | Parts Number | Description                                      | Q'ty | Execution |
|----------|--------------|--------------------------------------------------|------|-----------|
| 1        | 243-51202-01 | BLOWER HOUSING, compl.                           | 1    |           |
| * 2      | 243-50201-10 | RECOIL STARTER ASS'Y<br>Includes items 3 thru 13 | 1    |           |
| 3        | 239-50220-08 | REEL, compl.                                     | 1    |           |
| 4        | 106-50128-18 | RATCHET                                          | 2    |           |
| 5        | 106-50116-08 | SPIRAL SPRING                                    | 1    |           |
| 6        | 106-50132-08 | FRICTION SPRING                                  | 1    |           |
| 7        | 106-50136-18 | RETURN SPRING                                    | 1    |           |
| 8        | 106-50144-18 | FRICTION PLATE                                   | 1    |           |
| 9        | 106-50185-18 | THRUST WASHER                                    | 1    |           |
| 10       | 106-50186-08 | CLIP                                             | 1    |           |
| 11       | 243-50110-08 | STARTER ROPE                                     | 1    |           |
| 12       | 236-50100-08 | STARTER KNOB                                     | 1    |           |
| 13       | 243-50145-08 | STARTING PULLEY                                  | 1    |           |
| 14       | 243-95004-03 | LABEL, diesel mark                               | 1    |           |
| 15       | 243-52601-23 | CYLINDER BAFFLE                                  | 1    |           |
| 16       | 244-91803-03 | LABEL, engine name                               | 1    |           |
| 17       | 011-00600-10 | FLANGE BOLT                                      | 5    |           |
| 18       | 001-13083-00 | BOLT and WASHER ASS'Y                            | 2    |           |
| 19       | 001-13082-00 | BOLT and WASHER ASS'Y                            | 2    |           |
| 20       | 001-13061-20 | BOLT and WASHER ASS'Y                            | 3    |           |
| 21       | 243-55001-13 | PLUG                                             | 1    |           |
| 22       | 243-55002-01 | BOLT                                             | 1    |           |
|          |              |                                                  |      |           |
|          |              |                                                  |      |           |
|          |              |                                                  |      |           |
|          |              |                                                  |      |           |
|          |              |                                                  |      |           |
|          |              |                                                  |      |           |
|          |              |                                                  |      |           |
|          |              |                                                  |      |           |
|          |              |                                                  |      |           |
|          |              |                                                  |      |           |
|          |              |                                                  |      |           |
|          |              |                                                  |      |           |
|          |              |                                                  |      |           |
|          |              |                                                  |      |           |
|          |              |                                                  |      |           |
|          |              |                                                  |      |           |
|          |              |                                                  |      |           |

When ordering parts ; Always give the Model, Specification and Serial Number of Pump.

FIG. 9 FUEL TANK GROUP



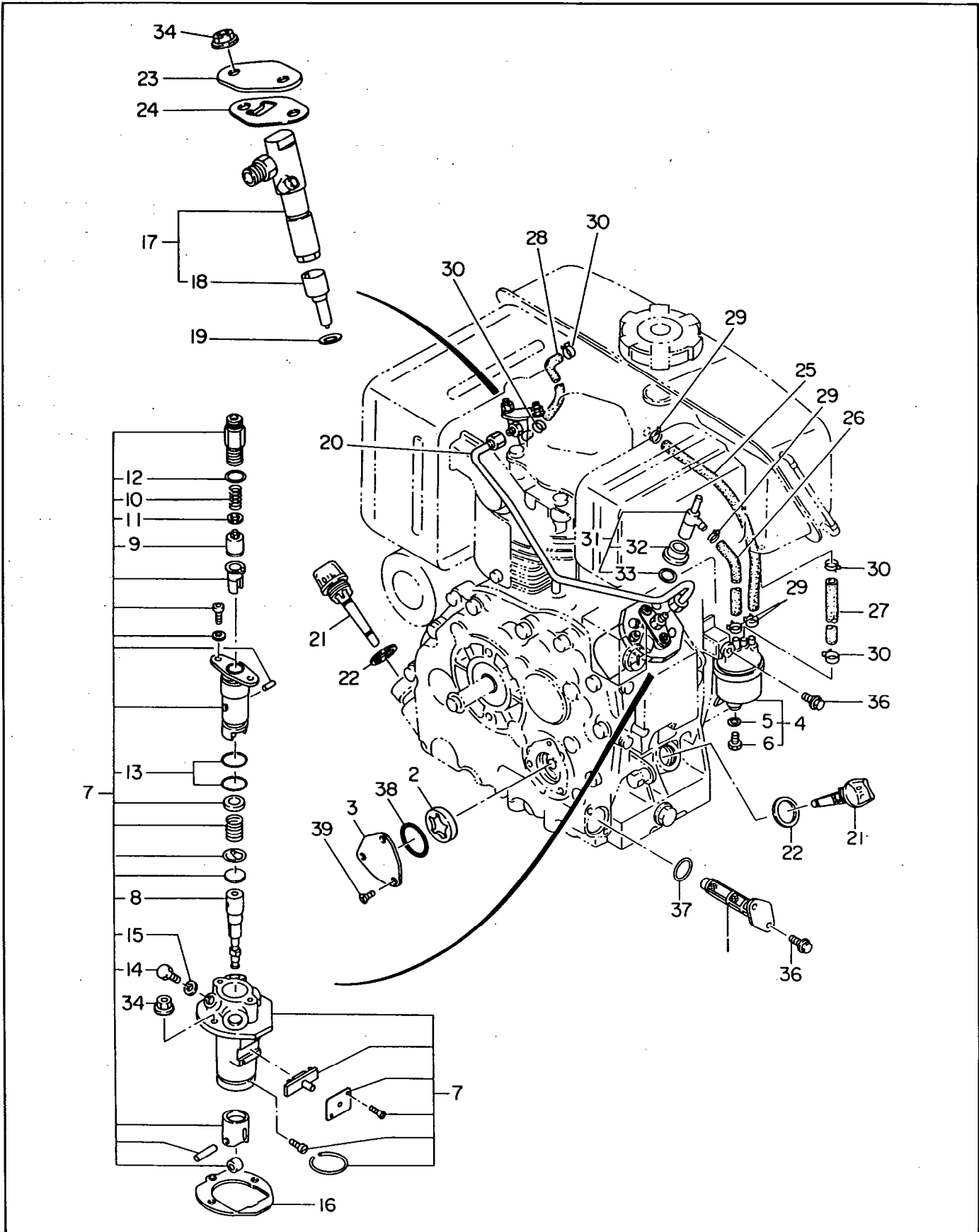
**FIG. 9 FUEL TANK GROUP**

Interchangeability

| Ref. No. | Parts Number | Description                                               | Q'ty | Execution |
|----------|--------------|-----------------------------------------------------------|------|-----------|
| *1       | 243-60104-11 | FUEL TANK, compl. Includes items 2 and 3                  | 1    |           |
| 2        | 243-91902-03 | LABEL, instruction                                        | 1    |           |
| 3        | 243-92002-03 | LABEL, caution                                            | 1    |           |
| 4        | 043-04300-15 | FUEL TANK CAP, compl.                                     | 1    |           |
| 5        | 064-13600-10 | FUEL FILTER                                               | 1    |           |
| 6        | 056-10800-10 | HOSE CLAMP                                                | 3    |           |
| 7        | 085-00500-00 | VINYL PIPE (5 $\phi$ $\times$ 8 $\phi$ $\times$ 120mm)    | 1    |           |
| *8       | 243-66501-00 | FUEL COCK ASS'Y Includes items 9 and 10                   | 1    |           |
| 9        | 243-66505-18 | NUT                                                       | 1    |           |
| 10       | 243-66506-08 | RUBBER PACKING                                            | 1    |           |
| *11      | 243-66510-00 | AIR COCK ASS'Y Includes items 12 and 13                   | 1    |           |
| 12       | 243-66505-18 | NUT                                                       | 1    |           |
| 13       | 243-66506-08 | RUBBER PACKING                                            | 1    |           |
| *14      | 243-62601-01 | FUEL PIPE 1, compl. Includes items 15 thru 17             | 1    |           |
| 15       | 243-65005-03 | PIPE                                                      | 1    |           |
| 16       | 085-10400-00 | RUBBER PIPE (4.5 $\phi$ $\times$ 9 $\phi$ $\times$ 160mm) | 1    |           |
| 17       | 056-10800-10 | HOSE CLAMP                                                | 2    |           |
| 18       | 243-91720-03 | LABEL, trade mark                                         | 1    |           |
| 19       | 001-13082-00 | BOLT and WASHER ASS'Y                                     | 1    |           |
| 20       | 150-75201-03 | CLAMP                                                     | 1    |           |
| 21       | 001-10061-00 | BOLT and WASHER ASS'Y                                     | 1    |           |
|          |              |                                                           |      |           |
|          |              |                                                           |      |           |
|          |              |                                                           |      |           |
|          |              |                                                           |      |           |
|          |              |                                                           |      |           |
|          |              |                                                           |      |           |
|          |              |                                                           |      |           |
|          |              |                                                           |      |           |
|          |              |                                                           |      |           |
|          |              |                                                           |      |           |
|          |              |                                                           |      |           |
|          |              |                                                           |      |           |
|          |              |                                                           |      |           |
|          |              |                                                           |      |           |
|          |              |                                                           |      |           |
|          |              |                                                           |      |           |
|          |              |                                                           |      |           |
|          |              |                                                           |      |           |
|          |              |                                                           |      |           |
|          |              |                                                           |      |           |
|          |              |                                                           |      |           |

When ordering parts : Always give the Model, Specification and Serial Number of Pump.

FIG. 10 FUEL SYSTEM GROUP



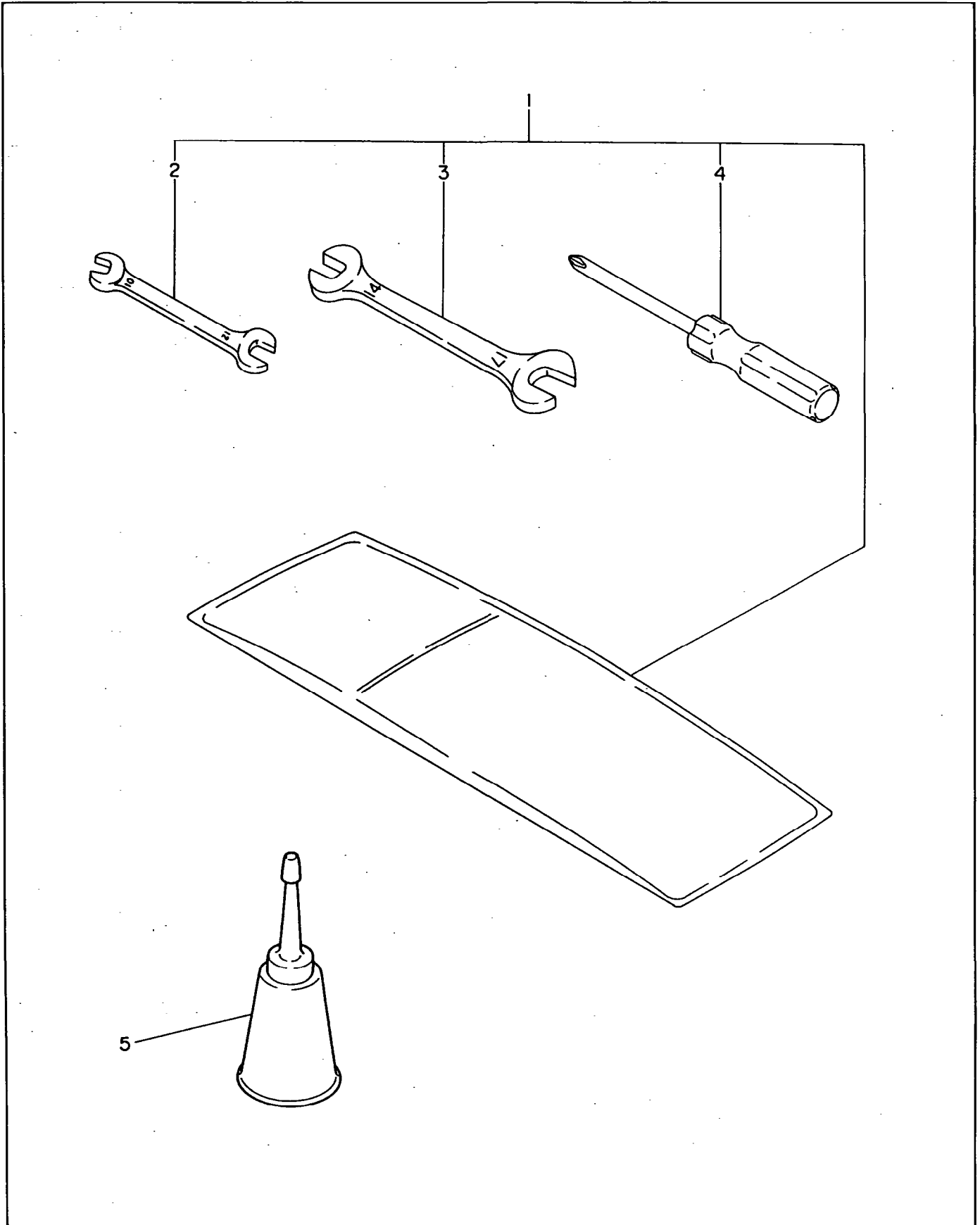


**FIG. 10 FUEL SYSTEM GROUP**

| Ref. No. | Parts Number | Description                                      | Q'ty       | Interchangeability |           |
|----------|--------------|--------------------------------------------------|------------|--------------------|-----------|
|          |              |                                                  |            |                    | Execution |
| 1        | 243-64301-00 | OIL FILTER ASS'Y                                 | 1          |                    |           |
| 2        | 228-63902-03 | OIL PUMP, outer                                  | 1          |                    |           |
| 3        | 243-66020-01 | COVER, oil pump                                  | 1          |                    |           |
| *4       | 243-62101-10 | FUEL FILTER ASS'Y Includes items 5 and 6         | 1          |                    |           |
| 5        | 228-62112-08 | PACKING                                          | 1          |                    |           |
| 6        | 228-62111-08 | PLUG                                             | 1          |                    |           |
| *7       | 243-63101-10 | INJECTION PUMP ASS'Y<br>Includes items 8 thru 15 | 1          |                    |           |
| 8        | 243-63102-08 | PLUNGER ASS'Y                                    | 1          |                    |           |
| 9        | 243-63103-08 | DELIVARY VALVE                                   | 1          |                    |           |
| 10       | 243-63104-08 | SPRING D.V.                                      | 1          |                    |           |
| 11       | 243-63105-08 | GASKET                                           | 1          |                    |           |
| 12       | 243-63107-08 | "O"RING                                          | 1          |                    |           |
| 13       | 243-63110-08 | "O"RING                                          | 2          |                    |           |
| 14       | 243-63124-08 | BOLT                                             | 1          |                    |           |
| 15       | 243-63125-08 | GASKET                                           | 1          |                    |           |
| 16       | 243-65001-03 | GASKET, injection pump (t=0.1)                   | 1          |                    |           |
| 16       | 243-65002-03 | GASKET, injection pump (t=0.2)                   | select one | 1                  |           |
| 16       | 243-65003-03 | GASKET, injection pump (t=0.3)                   | piece only | 1                  |           |
| *17      | 243-63201-00 | NOZZLE ASS'Y Includes item 18                    | 1          |                    |           |
| 18       | 243-63204-08 | NOZZLE                                           | 1          |                    |           |
| 19       | 228-65004-03 | GASKET, nozzle                                   | 1          |                    |           |
| 20       | 243-63301-01 | INJECTION PIPE, compl.                           | 1          |                    |           |
| 21       | 224-63601-03 | OIL GAUGE                                        | 2          |                    |           |
| 22       | 021-32000-10 | GASKET                                           | 2          |                    |           |
| 23       | 243-66001-01 | BRACKET, nozzle 1                                | 1          |                    |           |
| 24       | 243-66010-03 | BRACKET, nozzle 2                                | 1          |                    |           |
| 25       | 085-10600-00 | RUBBER PIPE (6φ×12φ×175mm)                       | 1          |                    |           |
| 26       | 085-10600-00 | RUBBER PIPE (6φ×12φ×120mm)                       | 1          |                    |           |
| 27       | 085-10400-00 | RUBBER PIPE (4.5φ×9φ×85mm)                       | 1          |                    |           |
| 28       | 085-10400-00 | RUBBER PIPE (4.5φ×9φ×135mm)                      | 1          |                    |           |
| 29       | 056-11100-20 | HOSE CLAMP                                       | 4          |                    |           |
| 30       | 056-10800-10 | HOSE CLAMP                                       | 4          |                    |           |
| *31      | 243-66520-00 | T-CONNECTOR ASS'Y Includes items 32 and 33       | 1          |                    |           |
| 32       | 243-66521-08 | NUT                                              | 1          |                    |           |
| 33       | 243-66506-08 | PACKING                                          | 1          |                    |           |
| 34       | 002-38060-00 | FLANGE NUT                                       | 4          |                    |           |
| 36       | 011-00600-20 | FLANGE BOLT                                      | 4          |                    |           |
| 37       | 006-26202-00 | "O"RING                                          | 1          |                    |           |
| 38       | 006-26103-30 | "O"RING                                          | 1          |                    |           |
| 39       | 004-11061-60 | SCREW                                            | 3          |                    |           |

When ordering parts : Always give the Model, Specification and Serial Number of Pump.

**FIG. 11 ACCESSORIES GROUP**



### FIG. 11 ACCESSORIES GROUP

| Ref. No. | Parts Number | Description                                    | Q'ty | Interchangeability |           |
|----------|--------------|------------------------------------------------|------|--------------------|-----------|
|          |              |                                                |      |                    | Execution |
| * 1      | 243-90301-00 | ACCESSORY TOOLS KIT<br>Includes items 1 thru 4 | 1    |                    |           |
| 5        | 243-65006-00 | OIL FEEDER ASS'Y                               | 1    |                    |           |
|          |              |                                                |      |                    |           |
|          |              |                                                |      |                    |           |
|          |              |                                                |      |                    |           |
|          |              |                                                |      |                    |           |
|          |              |                                                |      |                    |           |
|          |              |                                                |      |                    |           |
|          |              |                                                |      |                    |           |
|          |              |                                                |      |                    |           |
|          |              |                                                |      |                    |           |
|          |              |                                                |      |                    |           |
|          |              |                                                |      |                    |           |
|          |              |                                                |      |                    |           |
|          |              |                                                |      |                    |           |
|          |              |                                                |      |                    |           |
|          |              |                                                |      |                    |           |
|          |              |                                                |      |                    |           |
|          |              |                                                |      |                    |           |
|          |              |                                                |      |                    |           |
|          |              |                                                |      |                    |           |
|          |              |                                                |      |                    |           |
|          |              |                                                |      |                    |           |

When ordering parts ; Always give the Model, Specification and Serial Number of Pump.



# **FUJI HEAVY INDUSTRIES LTD.**

**INDUSTRIAL PRODUCTS DIV./ OVERSEAS SALES DEPT.**

Subaru Bldg.

1-7-2, Nishi-Shinjuku, Shinjuku-ku, Tokyo 160, Japan

TEL: (TOKYO 03) 347-2414, 5 TELEX: 232-2401 FUJI J

CABLE ADDRESS: FUJIHEAVY TOKYO

FACSIMILE: (TOKYO 03) 347-2418