
PARTS CATALOG



Gasoline Engine Pump

Model

PTG207

 FUJI HEAVY INDUSTRIES LTD.

ISSUE EMD-PP0782

FIG. 1 PUMP

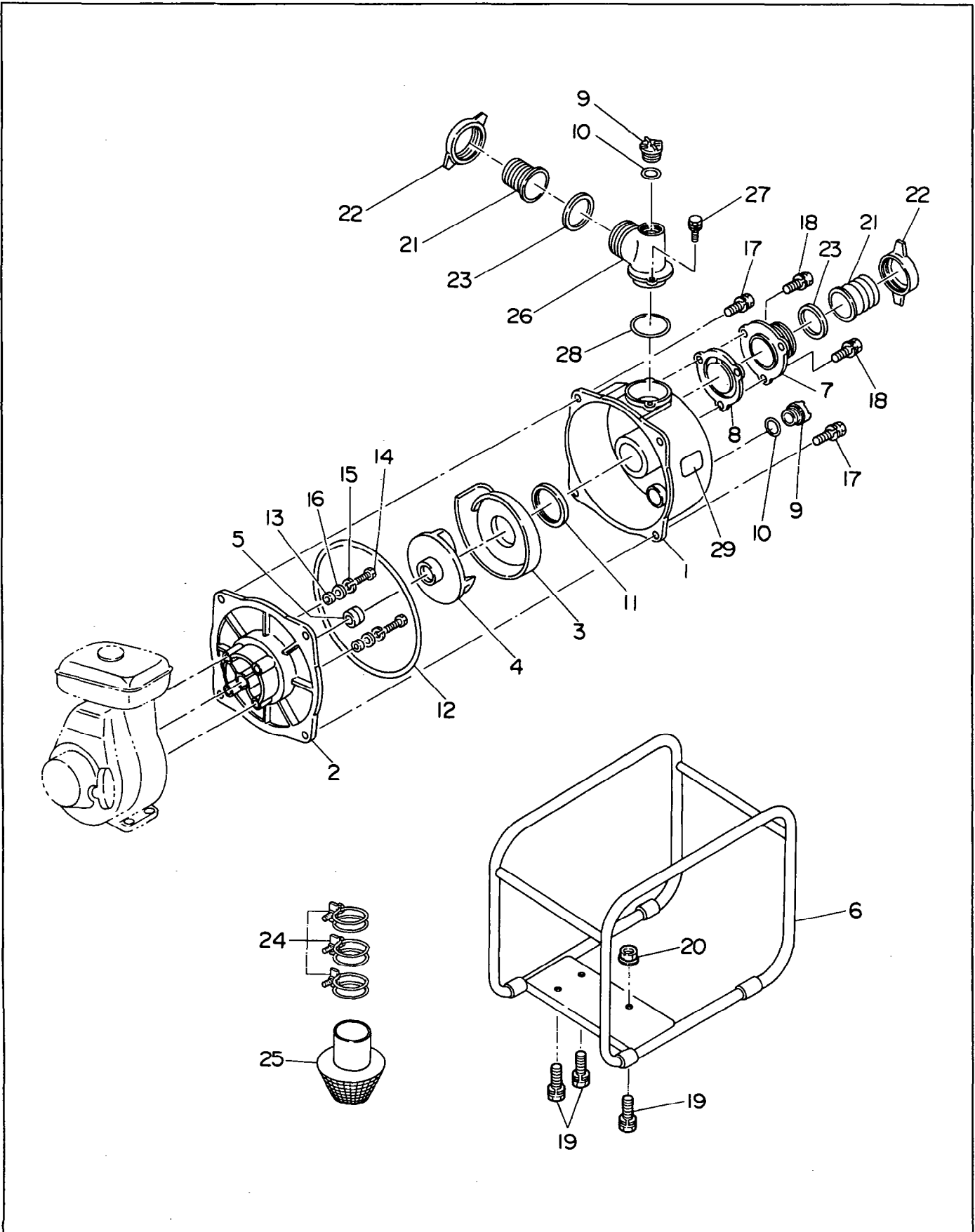


FIG. 1 PUMP

r Interchangeability

Ref. No.	Parts Number	Description	Q'ty	Execution
1	480-05080-01	CASING	1	
2	480-05050-04	CASING COVER	1	
3	480-05050-11	INNER CASING	1	
4	480-05050-09	IMPELLER	1	
5	480-05010-10	MECHANICAL SEAL	1	
6	481-00001-13	FRAME	1	
7	480-05050-13	VALVE CASE	1	
8	480-05050-15	CHECK VALVE	1	
9	480-05010-21	PLUG	2	
10	480-05010-22	PACKING, plug	2	
11	480-05010-12	PACKING, inner casing	1	
12	480-05050-02	PACKING, casing	1	
13	480-05010-06	SEAL PACKING	2	
14	480-05010-05	BOLT (M8×48)	2	
15	480-05010-08	SPRING WASHER	2	
16	480-05010-07	WASHER	2	
17	480-05010-14	BOLT and WASHER ASS' Y (M8×25)	4	
18	480-04010-34	BOLT and WASHER ASS' Y (M8×20)	3	
19	480-05010-23	BOLT and WASHER ASS' Y (M8×40)	4	
20	480-05010-24	FLANGE NUT (M8)	4	
21	481-00001-14	HOSE COUPLING	2	
22	481-00001-15	COUPLING HANDLE	2	
23	480-05010-17	PACKING, coupling	2	
24	480-05010-28	HOSE BAND	3	
25	480-05050-29	STRAINER	1	
26	480-05080-19	BEND	1	
27	480-02510-41	BOLT (M6×16)	2	
28	480-05080-20	O RING	1	
29	482-00070-03	LABEL, pump name	1	

FIG. 2 CRANKCASE

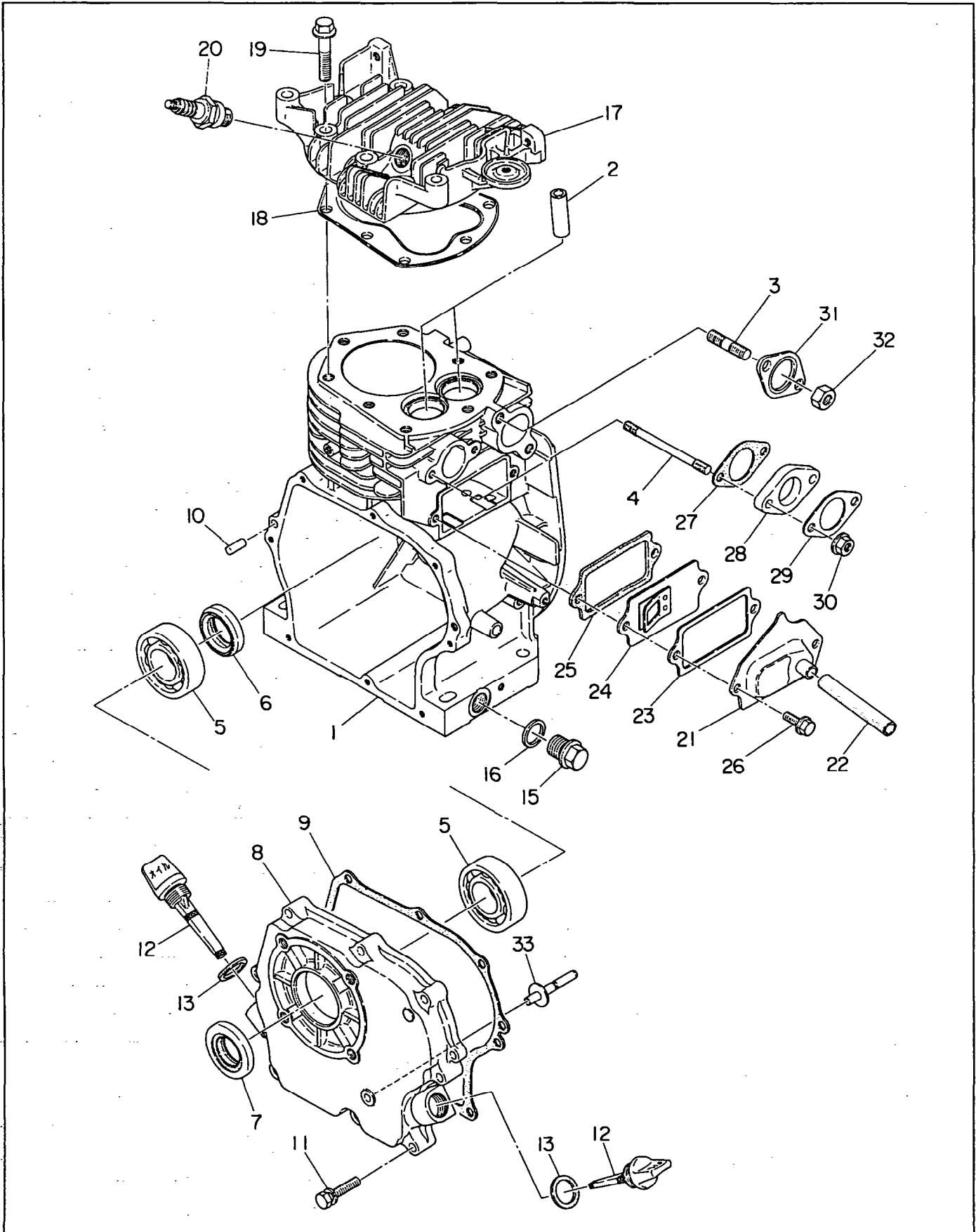


FIG. 2 CRANKCASE

r Interchangeability

Ref. No.	Parts Number	Description	Q'ty	Execution
*1	226-10101-21	CRANKCASE, compl. Includes itens 2 thru 6 and 10	1	
2	227-14202-03	VALVE GUIDE (over size)	2	
3	010-50802-50	STUD	2	
4	010-50601-20	STUD	2	
5	060-02500-10	BALL BEARING (BB-6205)	2	
6	044-02501-50	OIL SEAL (TB-25φ×38φ×7mm)	1	
7	044-02501-60	OIL SEAL (TB-25φ×41.24φ×7mm)	1	
*8	227-11001-21	MAIN BEARING COVER, compl. Includes itens 5,7 and 33	1	
9	227-16001-03	GASKET, bearing cover	1	
10	031-00600-20	DOWEL PIN	2	
11	013-00600-40	BOLT and WASHER ASS' Y	8	
12	227-63601-03	OIL GAUGE	2	
13	021-31600-10	GASKET	2	
15	040-11400-30	PLUG	2	
16	021-11400-20	GASKET	2	
17	226-13001-13	CYLINDER HEAD	1	
18	226-15001-11	GASKET, compl., head	1	
19	011-00800-10	FLANGE BOLT	8	
20	065-01400-36	SPARK PLUG (NGK-B6HS)	1	
21	227-14301-01	TAPPET COVER, compl.	1	
22	085-10800-00	RUBBER PIPE (8φ×11φ×64mm)	1	
23	227-16006-03	GASKET, tappet cover	1	
24	227-14401-01	BREATHER PLATE, compl.	1	
25	227-16007-03	GASKET, breather plate	1	
26	011-00600-20	FLANGE BOLT	2	
27	227-35901-03	GASKET, insulator	1	
28	227-32901-13	INSULATOR	1	
29	227-35904-03	GASKET 2, insulator	1	
30	002-38060-00	FLANGE NUT	2	
31	226-35201-01	GASKET, compl., exhaust	1	
32	002-19080-00	NUT	2	
*	226-99001-07	GASKET SET Includes itens 9,13,18,23,25,27,29 and 31	1	

FIG. 3 CRANKSHAFT, CAMSHAFT and PISTON

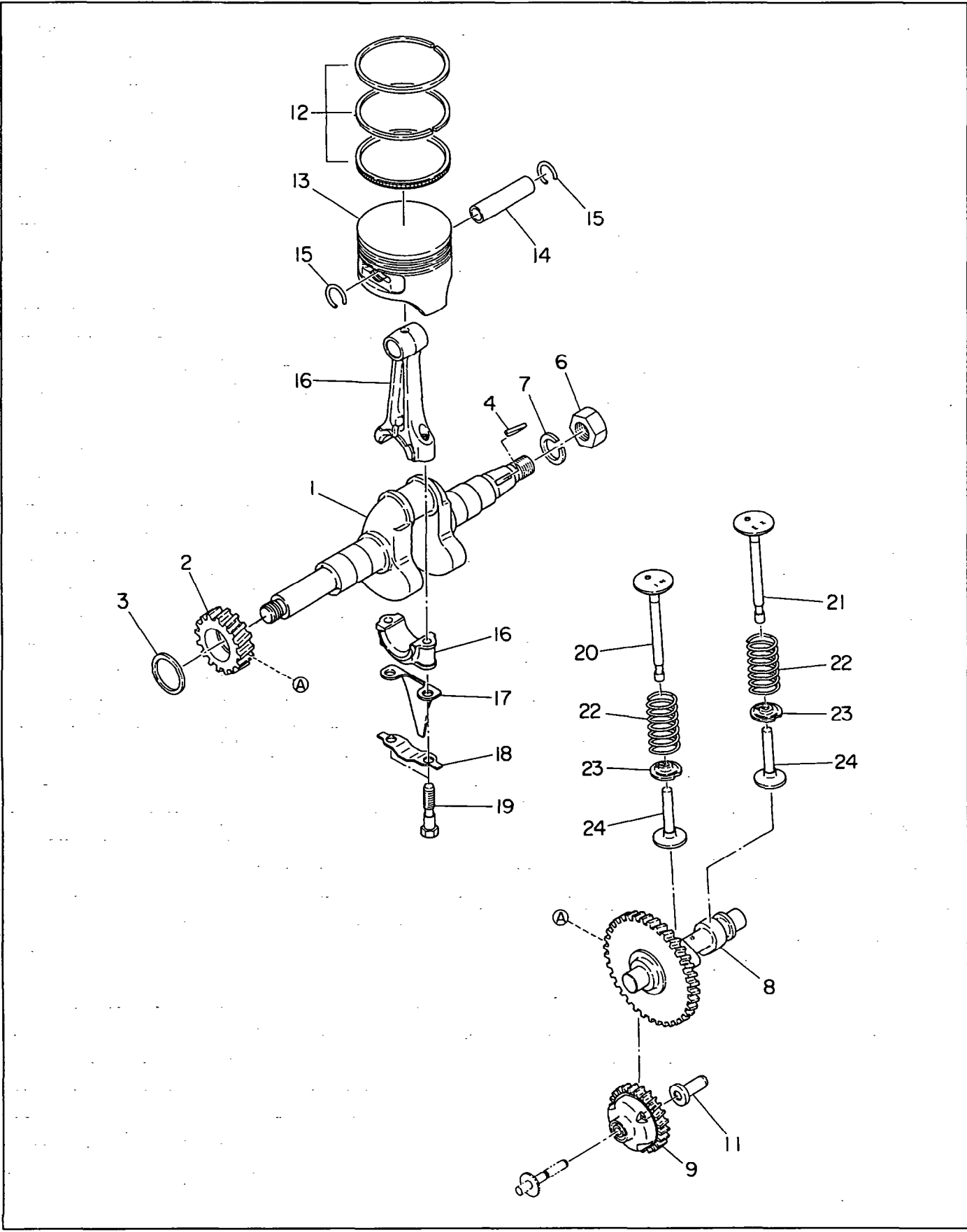


FIG. 4 GOVERNOR

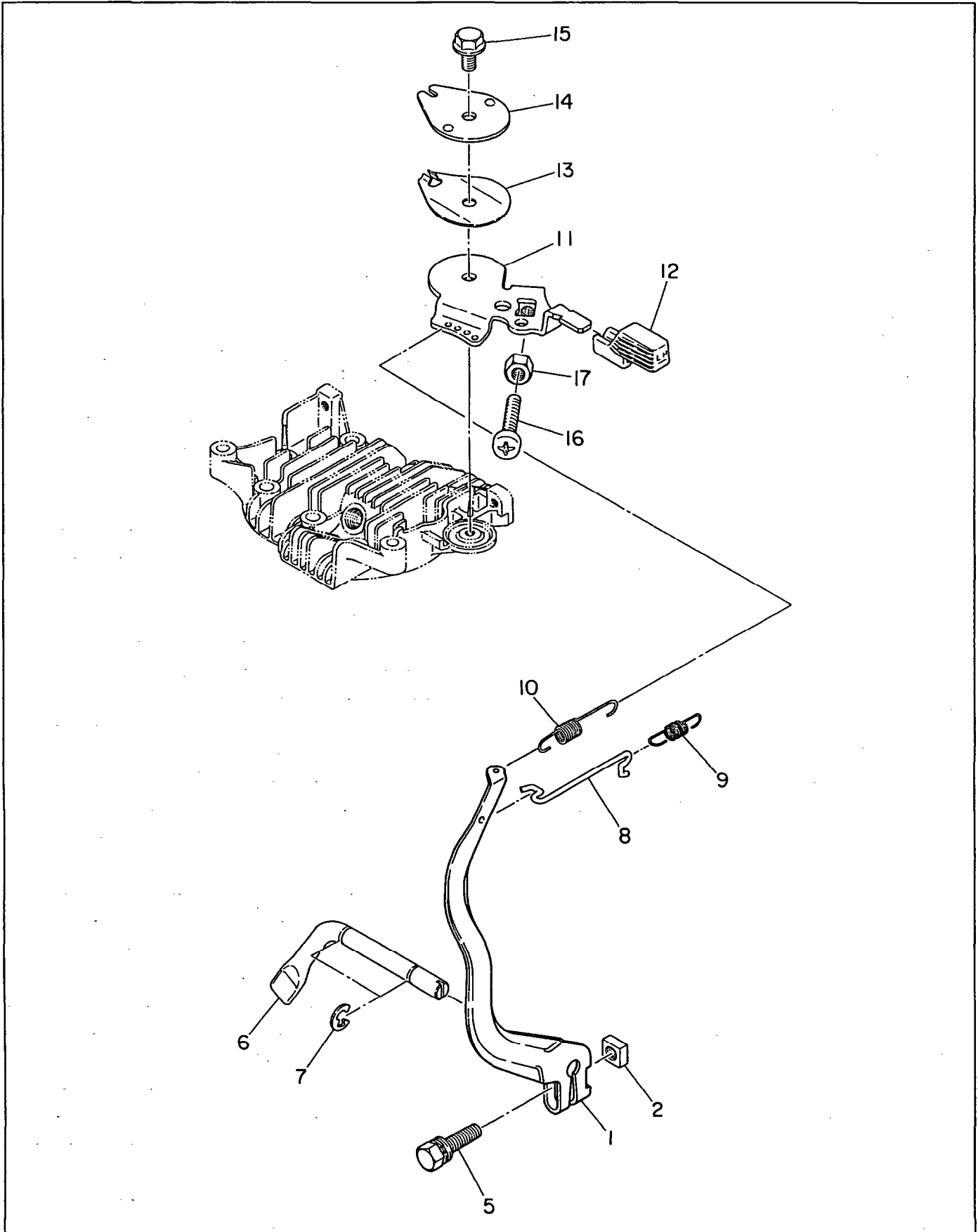


FIG. 4 GOVERNOR

r Interchangeability

Ref. No.	Parts Number	Description	Q'ty	Execution
1	226-42310-01	GOVERNOR LEVER, compl.	1	
2	018-60600-20	NUT	1	
5	001-14062-50	BOLT and WASHER ASS' Y	1	
6	227-42201-03	GOVERNOR SHAFT	1	
7	003-13060-00	CLIP	2	
8	227-42701-01	GOVERNOR ROD	1	
9	227-42801-01	ROD SPRING	1	
10	226-42501-13	GOVERNOR SPRING	1	
*11	227-43301-00	SPEED CONTROL ASS' Y Includes items 11 and 12	1	
11	227-43301-01	SPEED CONTROL	1	
12	227-43601-03	KNOB	1	
13	227-45002-03	SPRING WASHER	1	
14	227-43501-01	STOP PLATE	1	
15	011-00600-30	FLANGE BOLT	1	
16	004-31063-00	SCREW	1	
17	002-27060-00	NUT	1	

FIG. 5 BLOWER HOUSING and MUFFLER

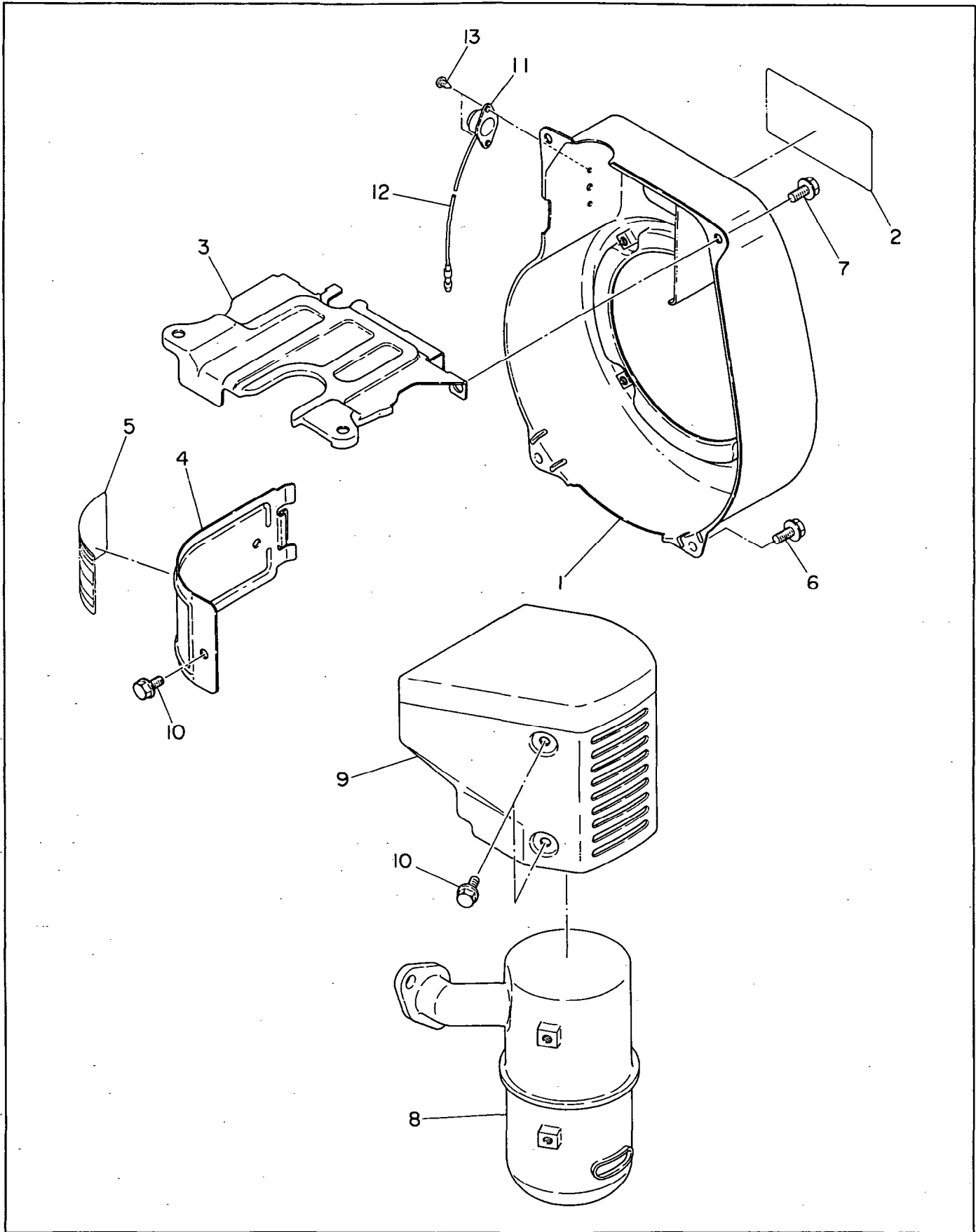


FIG. 5 BLOWER HOUSING and MUFFLER

r Interchangeability

Ref. No.	Parts Number	Description	Qty	Execution
*1	226-51209-01	BLOWER HOUSING, compl. Includes items 2 and 14	1	
2	226-91720-03	LABEL, trade mark	1	
3	226-52701-03	HEAD COVER	1	
*4	226-52604-01	CYLINDER BAFFLE, compl. Includes item 5	1	
5	226-91804-03	LABEL, engine name	1	
6	011-00600-20	FLANGE BOLT	2	
7	011-00600-30	FLANGE BOLT	2	
8	226-30102-01	MUFFLER, compl.	1	
9	226-34201-11	MUFFLER COVER, compl.	1	
10	011-00600-10	FLANGE BOLT	4	
11	066-20000-11	STOP BUTTON	1	
12	214-73201-01	WIRE 1, compl.	1	
13	015-00400-10	TAPPING SCREW	2	
14	073-20012-90	LABEL, stop switch	1	

FIG. 6 FUEL TANK

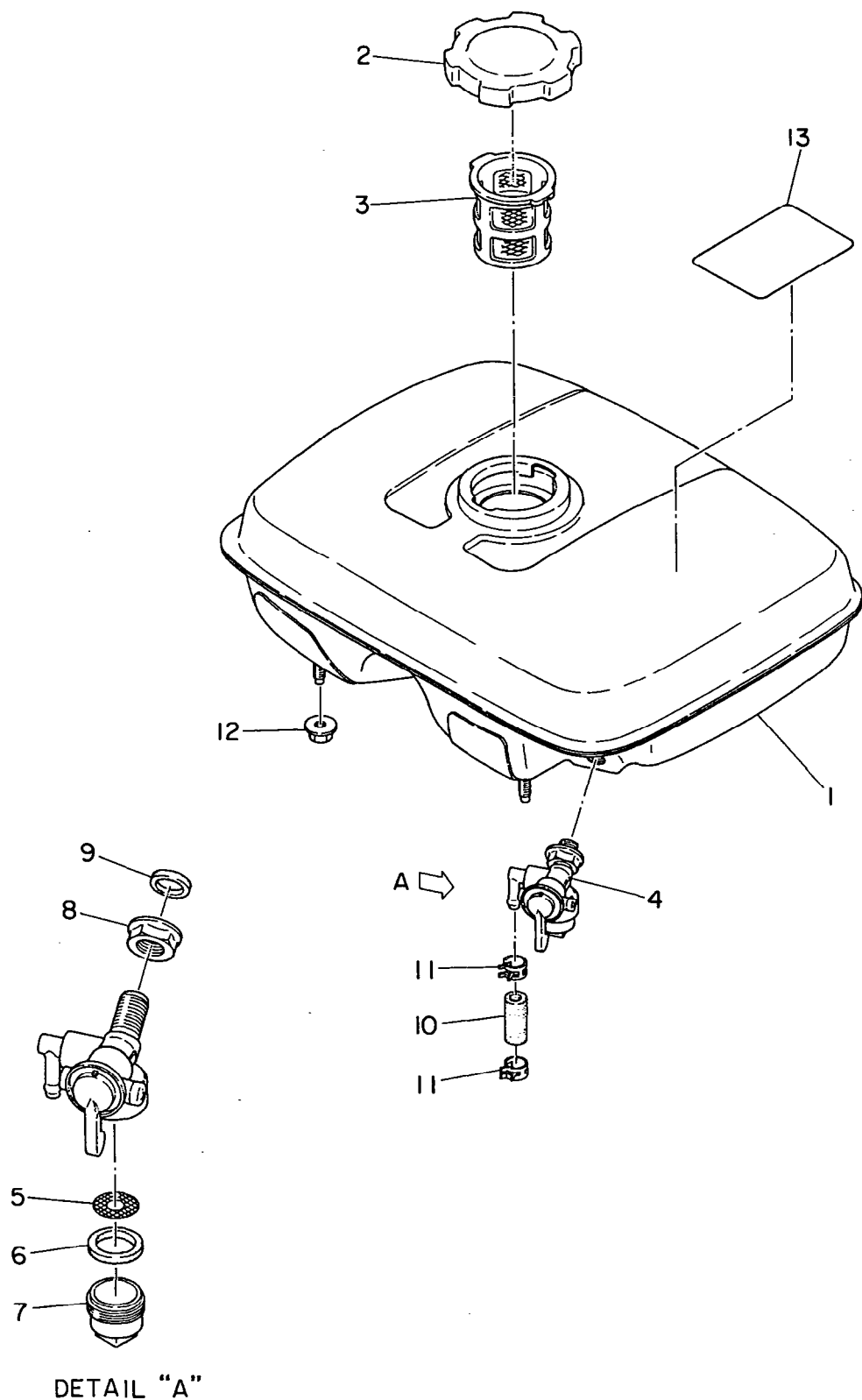


FIG. 7 AIR CLEANER and CARBURETOR

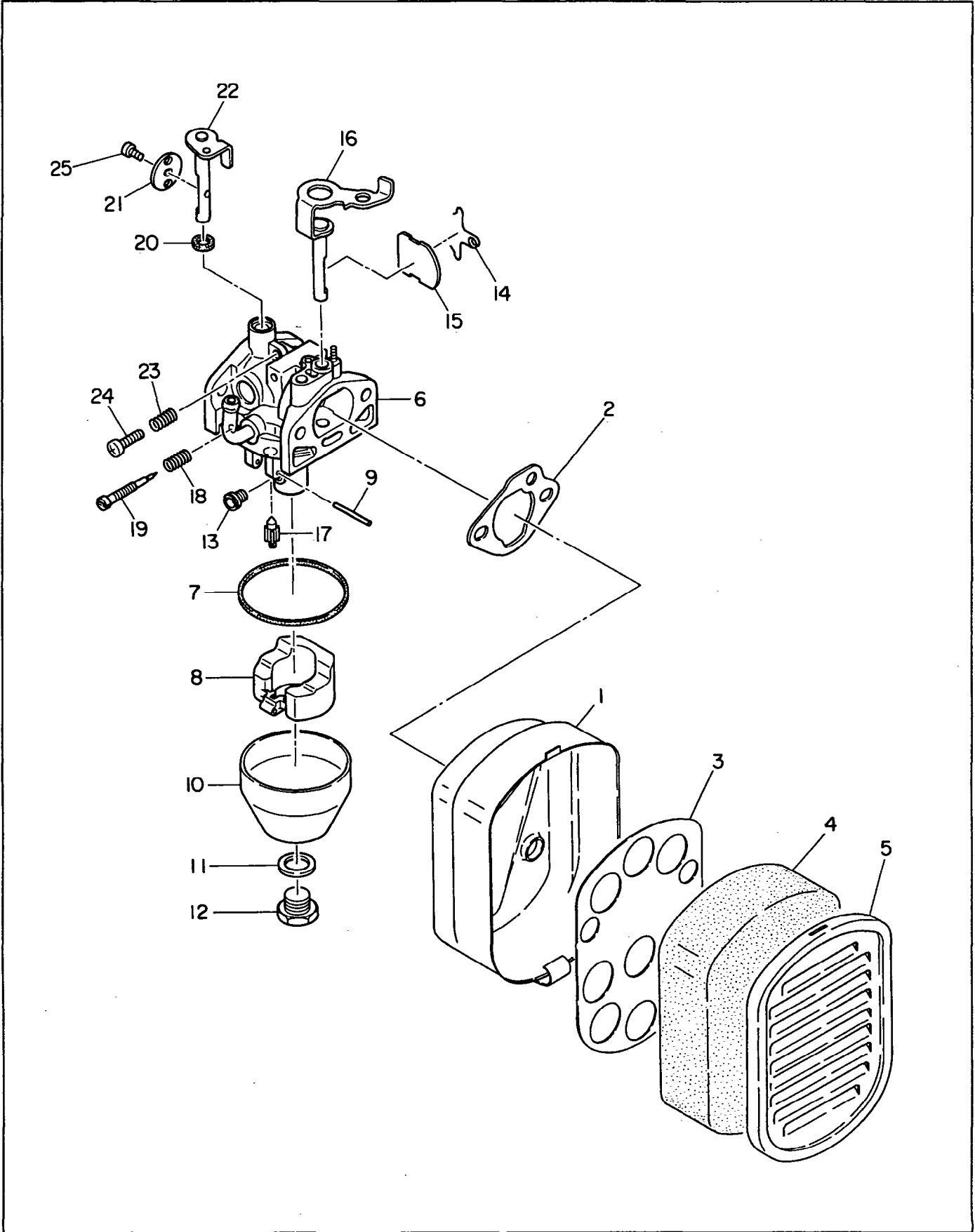


FIG. 7 AIR CLEANER and CARBURETOR

r Interchangeability

Ref. No.	Parts Number	Description	Qty	Execution
*1	227-32603-00	AIR CLEANER ASS' Y Includes items 2 thru 5	1	
2	227-36004-13	GASKET, air cleaner	1	
3	227-36002-03	CLEANER ELEMENT	1	
*6	226-62360-00	CARBURETOR ASS' Y Includes items 17 thru 25	1	
7	226-62542-08	FLOAT CHAMBER PACKING	1	
8	226-62507-08	FLOAT ASS' Y	1	
9	226-62515-08	FLOAT PIN	1	
10	226-62558-08	FLOAT CHAMBER BODY	1	
11	226-62460-08	PACKING	1	
12	226-62451-08	BOLT	1	
13	226-62409-08	MAIN JET (#82)	1	
14	226-62581-08	SPRING, valve	1	
15	226-62527-08	CHOKE VALVE	1	
16	226-62576-08	CHOKE LEVER	1	
17	226-62501-08	NEEDLE VALVE ASS' Y	1	
18	226-62445-08	SPRING, idle adjust	1	
19	226-62435-08	NEEDLE, idle adjust	1	
20	226-62580-08	FILTER, air	1	
21	226-62538-08	THROTTLE VALVE	1	
22	226-62537-08	SHAFT ASS' Y, throttle	1	
23	226-62446-08	SPRING	1	
24	226-62582-08	SCREW	1	
25	215-62531-08	SCREW	1	

FIG. 8 MAGNETO

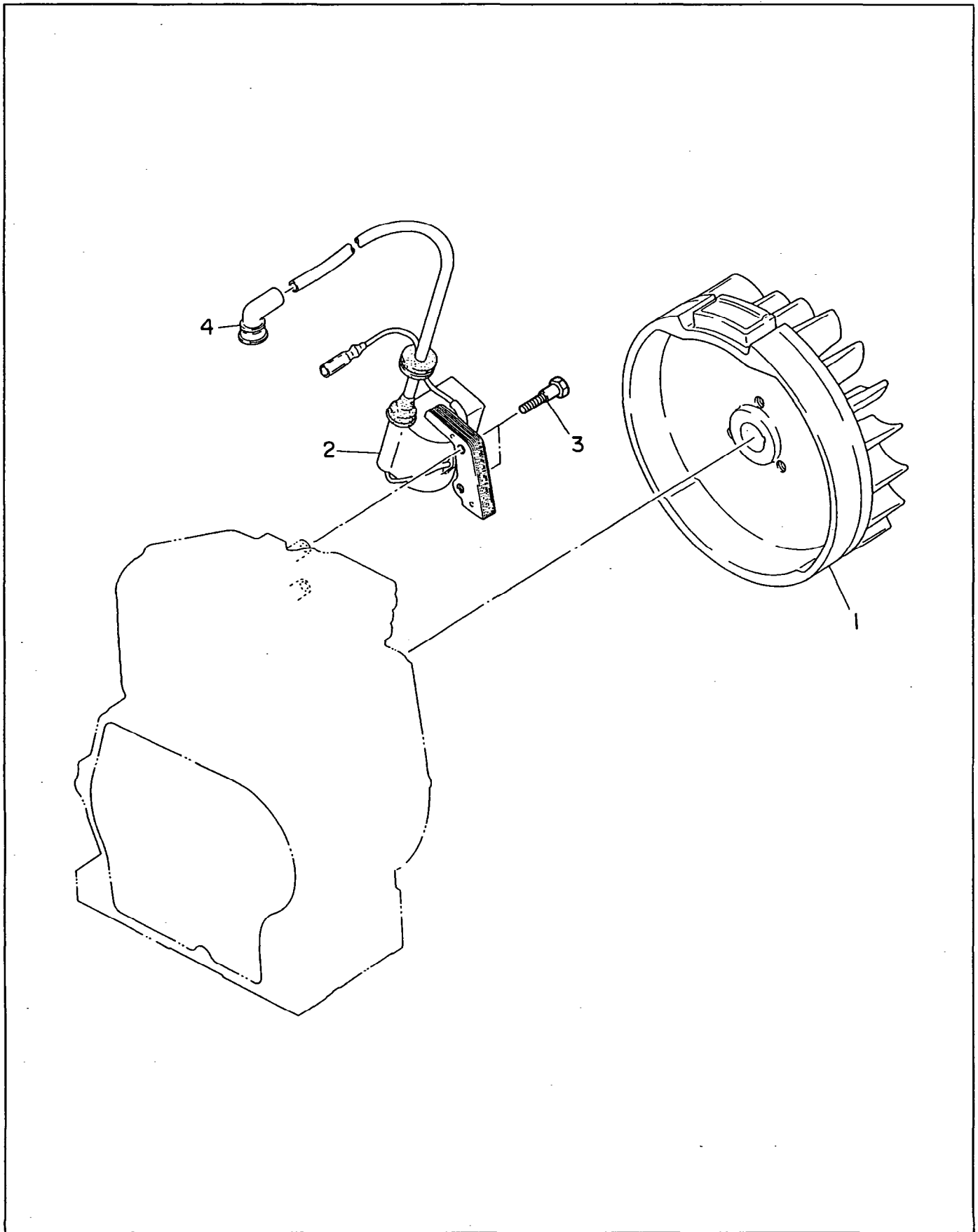


FIG. 9 RECOIL STARTER

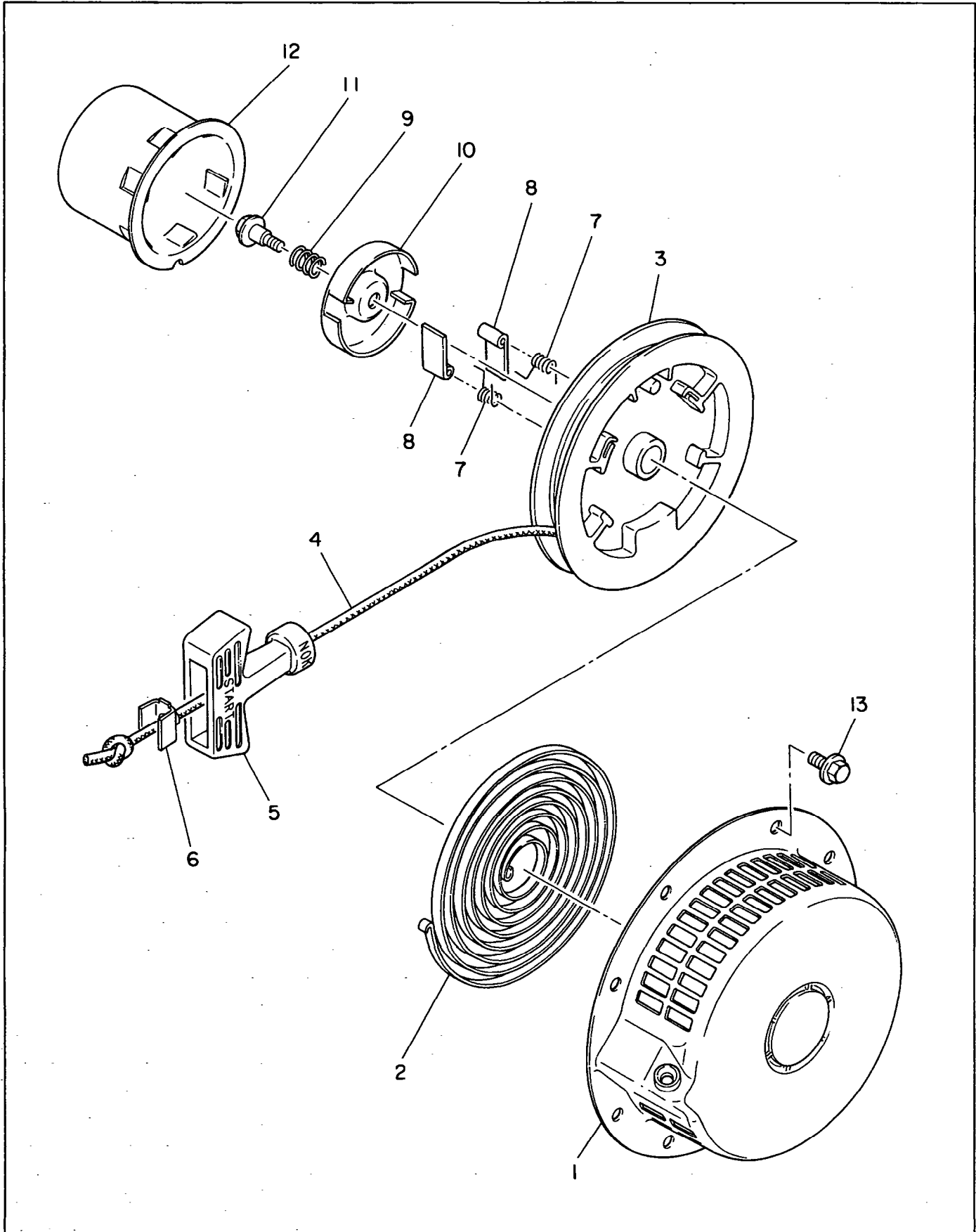


FIG. 10 ACCESSORIES

