

0CV10-M11000EN

P R E F A C E

1. This Parts Catalog carries all parts incorporated in YANMAR Model L40AE-DGMO, L40AE-DEGMO, L60AE-DGMO, L60AE-DEGMO, L90AE-DGMO and Model L90AE-DEGMO engine manufactured since May 1990.
2. Each illustration corresponds to the parts list on the following page.
3. When ordering parts, clearly write down the engine model and serial number, as well as the name and number of each part in your order sheet. This will help insure reliable delivery of the parts you have ordered.

Directions for the Parts Catalog.

1. The parts stipulated in this Parts Catalog are not necessarily standard equipped parts.
2. Parts may change without prior notice.
3. The following is an example of the Parts Catalog format.

OCF10-G21601 29. FUEL INJECTION PUMP(W/BOOST)

| REF. | LEV. | PARTS NO. | DESCRIPTION | Q'TY | | | | | | I | R |
|------|------|--|---------------------|------|-----|-----|-----|-----|-----|---|---|
| | | | | (A) | (B) | (C) | (D) | (E) | (F) | | |
| 1 | 1 | 729595-51390 | FUEL INJECTION PUMP | 1 | 1 | 1 | 1 | 1 | | | 1 |
| 1-1 | 1 | 729595-51391 | FUEL INJECTION PUMP | 1 | 1 | 1 | 1 | 1 | | N | 1 |
| | | (A=E00185) (B=E00200) | | | | | | | | | |
| 3 | 2 | 26022-060162 | SCREW M 6X 16 | 9 | 9 | 9 | 9 | 9 | | | |
| 3-1 | 2 | 26022-060162 | SCREW M 6X 16 | 4 | 4 | 4 | 4 | 4 | | K | |
| | | (A=E00156) (B=E00156) (C=E00156) (D=E00156) (E=E00156) | | | | | | | | | |
| 4 | 2 | 129470-51040 | CAMSHAFT | 1 | 1 | 1 | 1 | 1 | | | |
| 5 | 2 | 122710-51050 | BEARING, ROLLER | 2 | 2 | 2 | 2 | 2 | | | |
| 6 | 2 | 129470-51060 | RETAINER | 1 | 1 | 1 | 1 | 1 | | | |

Remarks

(1) BOOST COMPEMSATOR TYPE. OPTIONAL PART, TO E00155,(4JH-DT, 4JH-DTZ

① Ref. No.

The Ref. No. listed may not be in accordance with the illustration Ref. No.

(Ex.) Illustration No.

List Ref No.

1 1 (Before change) → 1-1 (After change)

For interchangeable symbols N, R and K, illustrations for new parts may be abbreviated.

② Lev. (Level)

Level indication

The numbers below indicate the level of relativity towards the main part.

1 ---- Main parts (Assembly parts)

2 ---- Sub component included in " 1 ".

3 ---- Sub component included in " 2 ".

Note) Parts that are not for sale are partially illustrated but not listed.

③ Interchangeability Mark

When a part change takes place, one of the following interchangeability symbols is indicated beside the part.

| Symbol | Interchangeability | Contents note |
|--------|---|--|
| N | Old $\begin{matrix} \leftarrow \text{Yes} \\ \text{No} \rightarrow \end{matrix}$ New | New Part is interchangeable for Old Part but Old Part is not interchangeable for New Part. |
| Q | Old $\begin{matrix} \leftarrow \text{No} \\ \text{Yes} \rightarrow \end{matrix}$ New | New Part is not interchangeable for Old Part but Old Part is interchangeable for New Part. |
| R | Old $\begin{matrix} \leftarrow \text{Yes} \\ \text{Yes} \rightarrow \end{matrix}$ New | New/ Old Parts are both interchangeable. |
| S | Old $\begin{matrix} \leftarrow \text{No} \\ \text{No} \rightarrow \end{matrix}$ New | New/ Old Parts are both not interchangeable. |
| W | | Part newly added. |
| Z | | Part discontinued. |
| F | | Not interchangeable by a single part but interchangeable together with related parts. |
| K | | Changes only for used parts quantities. |

④ Effective Machine No.

When a part changes, the effective Machine No. will be indicated in the (A)-(F) column.

| Product Symbol | Product No. | Product Symbol | Product No. |
|----------------|---------------------------|----------------|-----------------------------------|
| C | Clutch No. Compressor No. | F | Machine No. (Agricultural Equip.) |
| D | Drive No. | M | Machine No. |
| E | Engine No. | | |

Note 1) A date may follow the symbol. (Ex.) 1996.01

Note 2) "XXXXX" and "ZZZZZ" are for parts that could not be predicted or for engine models that could not be identified.

Note 3) (A=E00185) is the E (Engine Serial Number) for the column (A) model (in this case 4JH-DT) after the parts design change.

⑤ Remarks Mark

Figures or alphabets (symbols) are entered in the remarks column.

The comments (remarks) on parts that are indicated at the bottom of the illustration are the same symbols as those stated above.

Contents

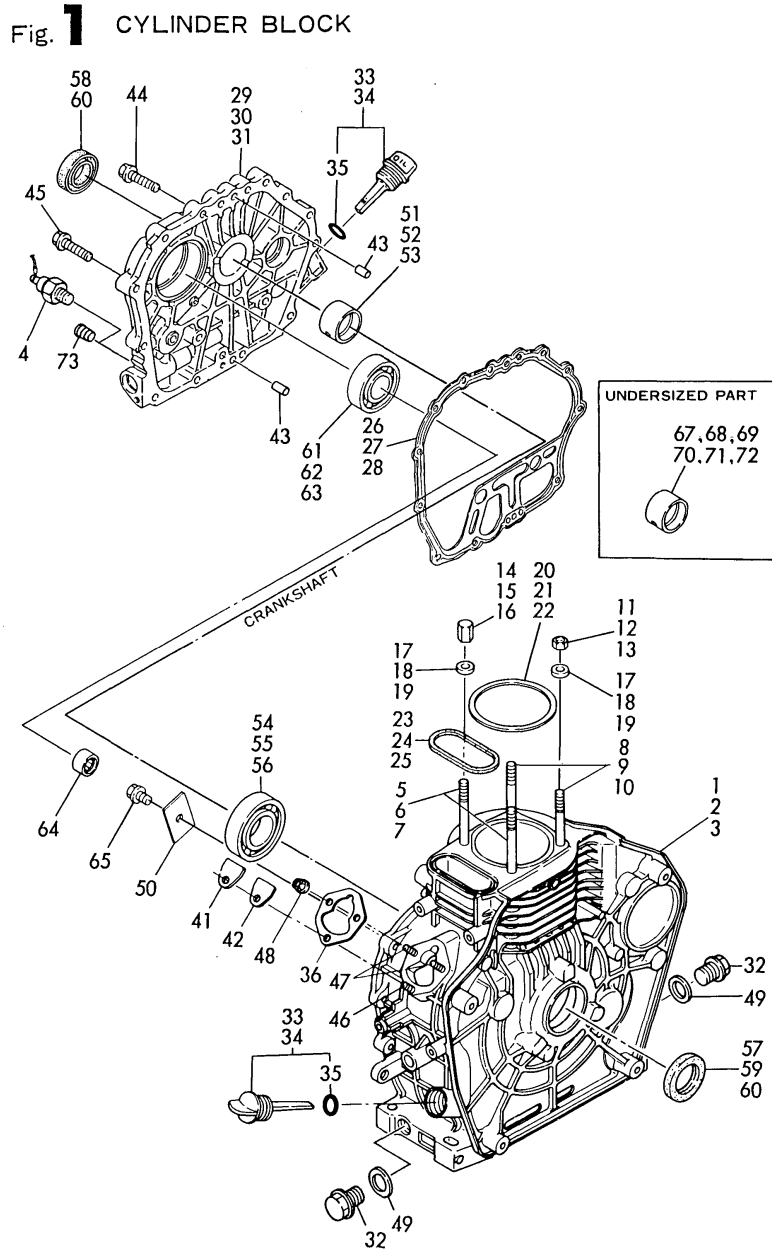
Fig. No. Fig. Name

L40-90AE-DGMO

1. CYLINDER BLOCK
2. CRANK, ROD & PISTON
3. CYLINDER HEAD
4. AIR CLEANER & SILENCER
5. LUB. OIL PUMP & GOVERNOR
6. COOLING & STARTING DEVICE
11. (6A)COOLING & STARTING DEVICE
7. FUEL INJECTION PUMP & VALVE
8. FUEL TANK & FUEL LINE
9. STARTING MOTOR & DYNAMO
10. LABEL, TOOL & GASKET SET

Fig. No. Fig. Name

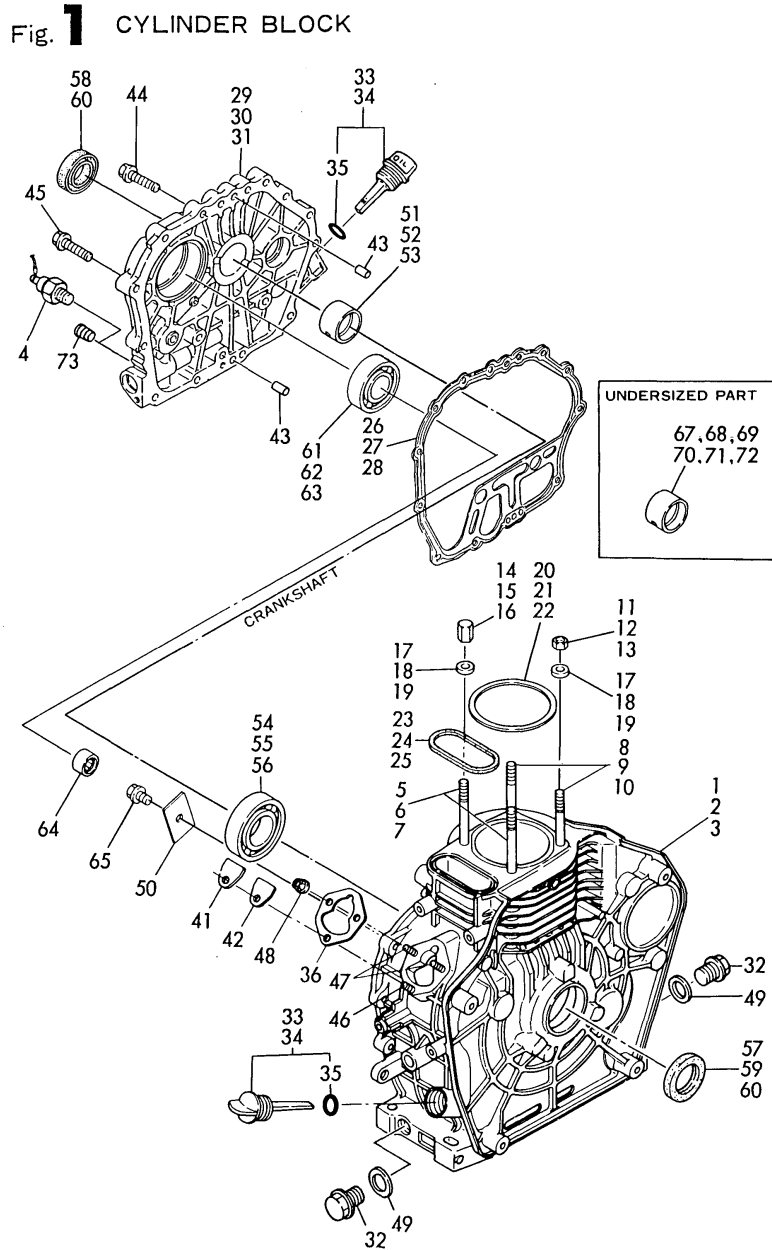
Fig.1. CYLINDER BLOCK



| No. | Lev. | Parts No. | Description | Q'ty | | | | | | I | R |
|-----|------|--------------|----------------------|------|-----|-----|-----|-----|-----|----|---|
| | | | | (A) | (B) | (C) | (D) | (E) | (F) | | |
| 1 | 1 | 714271-01560 | BLOCK ASSY, CYLINDER | 1 | 1 | | | | | | |
| 2 | 1 | 714371-01560 | BLOCK ASSY, CYLINDER | | | 1 | 1 | | | | |
| 3 | 1 | 714671-01560 | BLOCK ASSY, CYLINDER | | | | | 1 | 1 | | |
| 4 | 1 | 183250-39450 | SWITCH, 1.0KG | 1 | 1 | 1 | 1 | | | | |
| 5 | 1 | 114250-01200 | BOLT, HEAD | 2 | 2 | | | | | | |
| 6 | 1 | 114350-01200 | BOLT, HEAD | | | 2 | 2 | | | | |
| 7 | 1 | 114650-01230 | BOLT, HEAD | | | | | | 2 | 2 | |
| 8 | 1 | 114250-01210 | BOLT, HEAD | 2 | 2 | | | | | | |
| 9 | 1 | 114350-01210 | BOLT, HEAD | | | 2 | 2 | | | | |
| 10 | 1 | 114650-01240 | BOLT, HEAD | | | | | | 2 | 2 | |
| 11 | 1 | 114250-01220 | NUT, CYLINDER HEAD | 2 | 2 | | | | | | |
| 12 | 1 | 114350-01220 | NUT, CYLINDER HEAD | | | 2 | 2 | | | | |
| 13 | 1 | 105025-01220 | NUT, CYLINDER HEAD | | | | | 2 | 2 | | |
| 14 | 1 | 114250-01250 | NUT, CAP | 2 | 2 | | | | | | |
| 15 | 1 | 114350-01250 | NUT, CYLINDER HEAD | | | 2 | 2 | | | | |
| 16 | 1 | 114650-01250 | NUT, CYLINDER HEAD | | | | | | 2 | 2 | |
| 17 | 1 | 124950-01250 | WASHER | 4 | 4 | | | | | | |
| 18 | 1 | 105225-01240 | WASHER | | | 4 | 4 | | | | |
| 19 | 1 | 114650-01260 | WASHER | | | | | 4 | 4 | | |
| 20 | 1 | 114250-01340 | GASKET, HEAD | 1 | 1 | | | | | | |
| 21 | 1 | 114350-01340 | GASKET, HEAD | | | 1 | 1 | | | | |
| 22 | 1 | 114650-01340 | GASKET, HEAD | | | | | | 1 | 1 | |
| 23 | 1 | 114250-01380 | O-RING | 1 | 1 | | | | | | |
| 24 | 1 | 114350-01380 | O-RING | | | 1 | 1 | | | | |
| 25 | 1 | 114650-01380 | O-RING | | | | | | 1 | 1 | |
| 26 | 1 | 114250-01412 | GASKET, CRANK CASE | 1 | 1 | | | | | | |
| 27 | 1 | 114350-01412 | GASKET, CRANK CASE | | | 1 | 1 | | | | |
| 28 | 1 | 114650-01412 | GASKET, CRANK CASE | | | | | | 1 | 1 | |
| 29 | 1 | 114260-01453 | COVER, CRANK CASE | 1 | 1 | | | | | | |
| 30 | 1 | 114368-01452 | COVER, CRANK CASE | | | 1 | 1 | | | | |
| 31 | 1 | 114660-01470 | COVER, CRANK CASE | | | | | | 1 | 1 | |
| 32 | 1 | 105425-01690 | PLUG, 16 | 2 | 2 | 2 | 2 | 2 | 2 | 2 | |
| 33 | 1 | 160710-01760 | CAP ASSY, L82 | 2 | 2 | | | | | | |
| 34 | 1 | 160910-01740 | CAP ASSY | | | 2 | 2 | 2 | 2 | 2 | |
| 35 | 2 | 24311-000180 | O-RING, 1AP18.0 | 2 | 2 | 2 | 2 | 2 | 2 | 2 | |
| 36 | 1 | 114250-01800 | SHIM SET | 1 | 1 | 1 | 1 | 1 | 1 | 1 | |
| 41 | 1 | 114250-01830 | COVER | 1 | 1 | 1 | 1 | 1 | 1 | 1 | |
| 42 | 1 | 114250-01840 | GASKET | 1 | 1 | 1 | 1 | 1 | 1 | 1 | |
| 43 | 1 | 22312-080120 | PIN, PARALLEL M8X12 | 2 | 2 | 2 | 2 | 2 | 2 | 2 | |
| 44 | 1 | 26106-060252 | BOLT, M6X 25 PLATED | 14 | 14 | | | | | | |
| 45 | 1 | 26106-080352 | BOLT, M8X 35 PLATED | 1 | 1 | 15 | 15 | 16 | 16 | 16 | |
| 46 | 1 | 26226-060182 | STUD, M6X 18 | 1 | 1 | 1 | 1 | 1 | 1 | 1 | |
| 47 | 1 | 26226-060222 | STUD, M6X 22 | 2 | 2 | 2 | 2 | 2 | 2 | 2 | |
| 48 | 1 | 26366-060002 | NUT, M6 | 3 | 3 | 3 | 3 | 3 | 3 | 3 | |
| 49 | 1 | 43400-500490 | SEAL WASHER 16S | 2 | 2 | 2 | 2 | 2 | 2 | 2 | |
| 50 | 1 | 114250-02030 | RETAINER, BEARING | 1 | 1 | 1 | 1 | 1 | 1 | 1 | |
| 51 | 1 | 114250-02100 | BEARING, MAIN | 1 | 1 | | | | | | |
| 52 | 1 | 114350-02100 | BEARING, MAIN | | | 1 | 1 | | | | |
| 53 | 1 | 114650-02100 | BEARING, MAIN | | | | | | 1 | 1 | |
| 54 | 1 | 114250-02113 | BEARING, HR6306G3C3 | 1 | 1 | | | | | | |
| 55 | 1 | 114350-02113 | BEARING, B35-135G3C3 | | | 1 | 1 | | | | |

Remarks
(1) UNDERSIZED(U.S=0.25) PART.
(2) UNDERSIZED(U.S=0.5) PART.

Fig.1. CYLINDER BLOCK



(A)=L40AE-DGMO
(B)=L40AE-DEGMO
(C)=L60AE-DGMO

(D)=L60AE-DEGMO
(E)=L90AE-DGMO
(F)=L90AE-DEGMO

| No. | Lev. | Parts No. | Description | Q'ty | | | | | | I | R |
|-----|------|--------------|----------------------|------|-----|-----|-----|-----|-----|---|---|
| | | | | (A) | (B) | (C) | (D) | (E) | (F) | | |
| 56 | 1 | 114650-02150 | BEARING, HR6308G3C3 | | | | | | 1 | 1 | |
| 57 | 1 | 160110-02220 | SEAL, OIL | 1 | 1 | 1 | 1 | | | | |
| 58 | 1 | 160210-02220 | SEAL, 25X41.2X8 | 1 | 1 | | | | | | |
| 59 | 1 | 160110-02220 | SEAL, OIL | | | 1 | 1 | | | | |
| 60 | 1 | 24423-355008 | SEAL, OIL TC355008 | | | | | | 2 | 2 | |
| 61 | 1 | 24101-062050 | BEARING, BALL 6205C3 | 1 | 1 | | | | | | |
| 62 | 1 | 24101-062060 | BEARING, BALL 6206C3 | | | 1 | 1 | | | | |
| 63 | 1 | 24101-062070 | BEARING, BALL 6207C3 | | | | | | 1 | 1 | |
| 64 | 1 | 24162-152112 | BEARING, 152112 | 1 | 1 | 1 | 1 | 1 | 1 | 1 | |
| 65 | 1 | 26106-080122 | BOLT, M8X 12 PLATED | 1 | 1 | 1 | 1 | 1 | 1 | 1 | |
| 66 | 1 | 114250-35150 | PIPE, OIL INLET | 1 | 1 | 1 | 1 | 1 | 1 | 1 | |
| 67 | 1 | 114250-02200 | BEARING, 0.25 US | 1 | 1 | | | | | | 1 |
| 68 | 1 | 114350-02200 | BEARING, 0.25 US | | | 1 | 1 | | | | 1 |
| 69 | 1 | 114650-02200 | BEARING, 0.25 US | | | | | | 1 | 1 | 1 |
| 70 | 1 | 114250-02210 | BEARING, 0.50 US | 1 | 1 | | | | | | 2 |
| 71 | 1 | 114350-02210 | BEARING, 0.50 US | | | 1 | 1 | | | | 2 |
| 72 | 1 | 114650-02210 | BEARING, 0.50 US | | | | | | | 1 | 2 |
| 73 | 1 | 23871-010000 | PLUG, R01 | | | | | | | 1 | 1 |

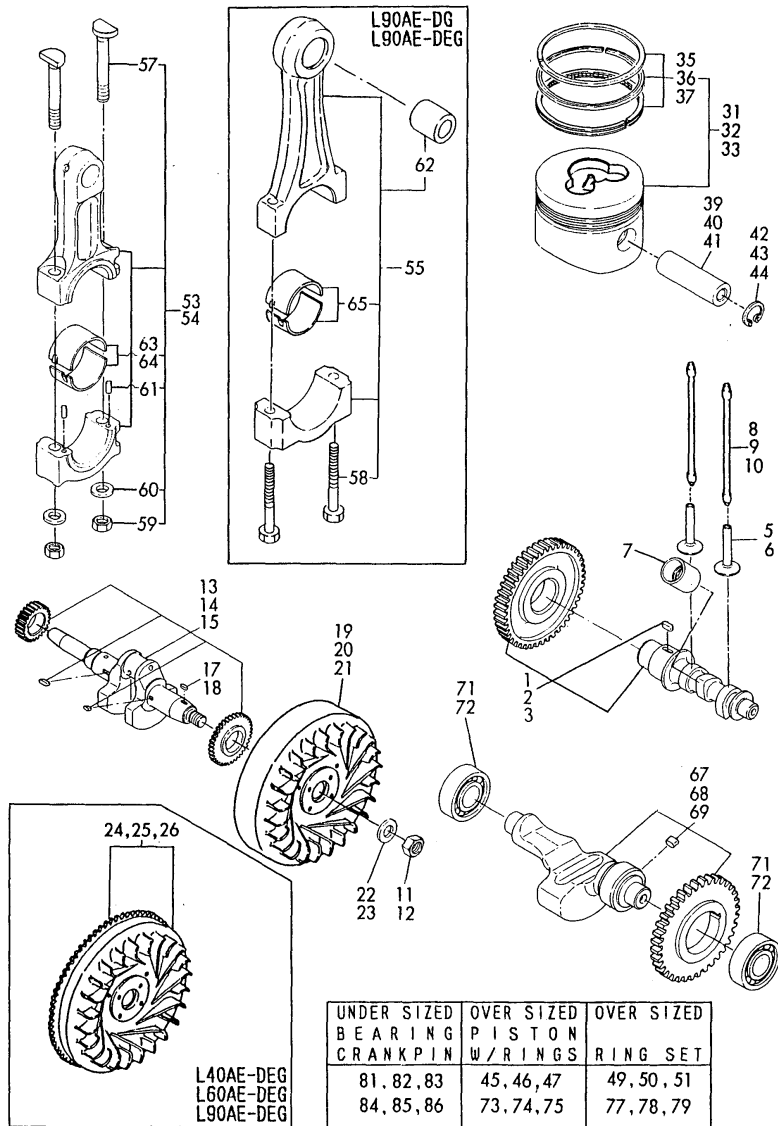
Remarks

- (1) UNDERSIZED(U.S=0.25) PART.
- (2) UNDERSIZED(U.S=0.5) PART.

Fig.2. CRANK, ROD & PISTON

(A)=L40AE-DGMO
 (B)=L40AE-DEGMO
 (C)=L60AE-DGMO
 (D)=L60AE-DEGMO
 (E)=L90AE-DGMO
 (F)=L90AE-DEGMO

Fig.2 CRANK, ROD & PISTON



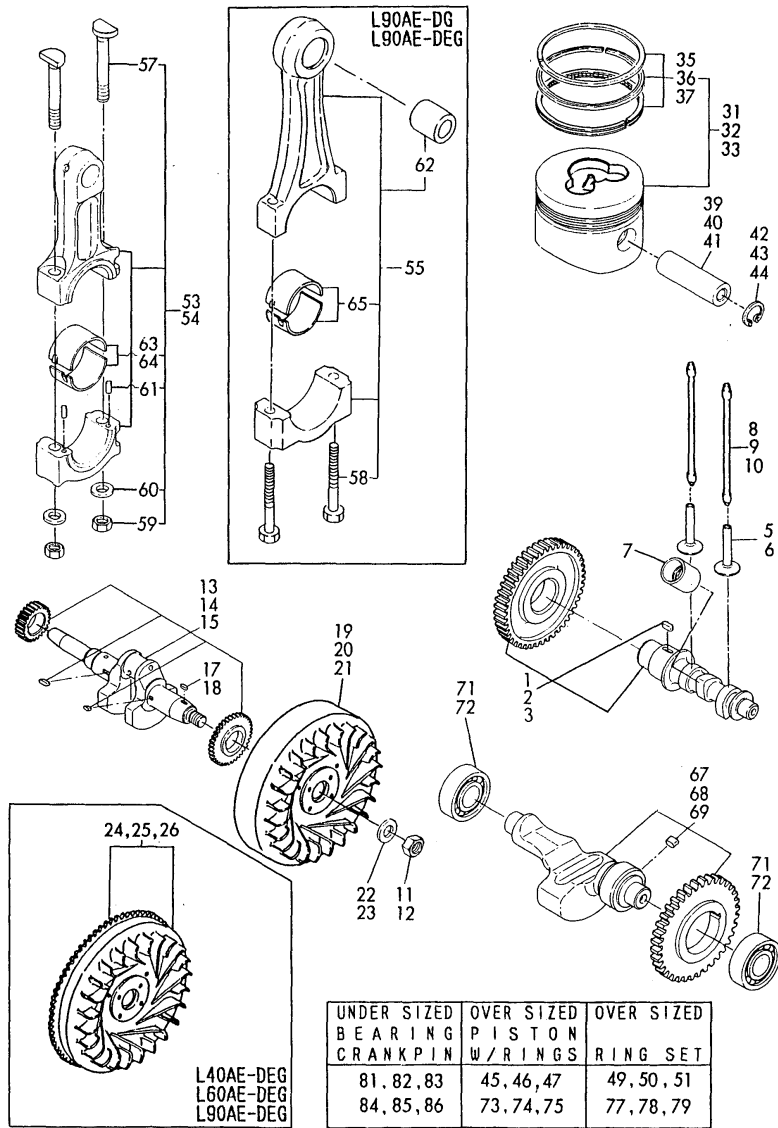
| No. | Lev. | Parts No. | Description | Q'ty | | | | | | I | R |
|-----|------|--------------|----------------------|------------|-----|------------|-----|-----|-----|---|---|
| | | | | (A) | (B) | (C) | (D) | (E) | (F) | | |
| 1 | 1 | 714780-14580 | CAMSHAFT ASSY | 1 | 1 | | | | | | |
| 1-1 | 1 | 714780-14581 | CAMSHAFT ASSY, D | 1 | 1 | | | | | | R |
| | | | | (A=EZZZZZ) | | (B=EZZZZZ) | | | | | |
| 2 | 1 | 714880-14580 | CAMSHAFT ASSY | | | 1 | 1 | | | | |
| 3 | 1 | 714660-14582 | CAMSHAFT ASSY | | | | | 1 | 1 | | |
| 5 | 1 | 114250-14200 | TAPPET | 2 | 2 | 2 | 2 | | | | |
| 6 | 1 | 114650-14200 | TAPPET | | | | | 2 | 2 | | |
| 7 | 1 | 114250-14260 | TAPPET | 1 | 1 | 1 | 1 | 1 | 1 | 1 | |
| 8 | 1 | 114250-14450 | ROD ASSY, PUSH | 2 | 2 | | | | | | |
| 9 | 1 | 114350-14450 | ROD ASSY, PUSH | | | 2 | 2 | | | | |
| 10 | 1 | 114650-14401 | ROD ASSY, PUSH | | | | | 2 | 2 | | |
| 11 | 1 | 103854-01221 | NUT, CYLINDER HEAD | 1 | 1 | 1 | 1 | | | | |
| 12 | 1 | 122710-01220 | NUT, CYLINDER HEAD | | | | | | | 1 | 1 |
| 13 | 1 | 714288-21730 | CRANKSHAFT ASSY | 1 | 1 | | | | | | |
| 14 | 1 | 714388-21730 | CRANKSHAFT ASSY | | | 1 | 1 | | | | |
| 15 | 1 | 714689-21730 | CRANKSHAFT ASSY | | | | | | | 1 | 1 |
| 17 | 1 | 22512-040120 | KEY, 4X 12 | 1 | 1 | 1 | 1 | | | | |
| 18 | 1 | 22512-050140 | KEY, 5X 14 | | | | | | | 1 | 1 |
| 19 | 1 | 114780-21400 | FLYWHEEL | 1 | | | | | | | |
| 20 | 1 | 114880-21400 | FLYWHEEL | | | 1 | | | | | |
| 21 | 1 | 114660-21401 | FLYWHEEL | | | | | | | 1 | |
| 22 | 1 | 114250-21550 | WASHER | 1 | 1 | 1 | 1 | | | | |
| 23 | 1 | 114650-21551 | WASHER | | | | | | | 1 | 1 |
| 24 | 1 | 114781-21590 | FLYWHEEL ASSY | | 1 | | | | | | |
| 25 | 1 | 114881-21590 | FLYWHEEL ASSY | | | | | 1 | | | |
| 26 | 1 | 114662-21592 | FLYWHEEL ASSY | | | | | | | | 1 |
| 31 | 1 | 714280-22720 | PISTON ASSY, D | 1 | 1 | | | | | | |
| 32 | 1 | 714380-22720 | PISTON ASSY, D | | | 1 | 1 | | | | |
| 33 | 1 | 714660-22723 | PISTON ASSY, D | | | | | | | 1 | 1 |
| 35 | 2 | 714250-22502 | RING SET, PISTON | 1 | 1 | | | | | | |
| 36 | 2 | 714350-22502 | RING SET, PISTON | | | 1 | 1 | | | | |
| 37 | 2 | 714650-22502 | RING SET, PISTON | | | | | | | 1 | 1 |
| 39 | 1 | 114250-22302 | PIN, PISTON D=19 | 1 | 1 | | | | | | |
| 40 | 1 | 114350-22301 | PIN, PISTON D=21 | | | 1 | 1 | | | | |
| 41 | 1 | 114650-22300 | PIN, PISTON D=23 | | | | | | | 1 | 1 |
| 42 | 1 | 22252-000190 | RING, 19 | 2 | 2 | | | | | | |
| 43 | 1 | 22252-000210 | RING, 21 | | | 2 | 2 | | | | |
| 44 | 1 | 129792-22400 | CIRCLIP, 23 | | | | | | | 2 | 2 |
| 45 | 1 | 714280-22620 | PISTON ASSY, 0.25 OS | 1 | 1 | | | | | | 1 |
| 46 | 1 | 714380-22620 | PISTON ASSY, 0.25 OS | | | 1 | 1 | | | | 1 |
| 47 | 1 | 714660-22623 | PISTON ASSY, 0.25 OS | | | | | | | 1 | 1 |
| 49 | 2 | 714250-22542 | RING SET, 0.25 OS | 1 | 1 | | | | | | 1 |
| 50 | 2 | 714350-22542 | RING SET, 0.25 OS | | | 1 | 1 | | | | 1 |
| 51 | 2 | 714650-22542 | RING SET, 0.25 OS | | | | | | | 1 | 1 |
| 53 | 1 | 714250-23703 | ROD ASSY, CONNECTING | 1 | 1 | | | | | | |
| 54 | 1 | 714350-23704 | ROD ASSY, CONNECTING | | | 1 | 1 | | | | |
| 55 | 1 | 714650-23700 | ROD ASSY, CONNECTING | | | | | | | 1 | 1 |
| 57 | 2 | 114250-23200 | BOLT, CONNECTING ROD | 2 | 2 | 2 | 2 | | | | |
| 58 | 2 | 104200-23201 | BOLT, CONNECTING ROD | | | | | | | 2 | 2 |
| 59 | 2 | 114250-23220 | NUT | 2 | 2 | 2 | 2 | | | | |
| 60 | 2 | 114250-23250 | WASHER | 2 | 2 | 2 | 2 | | | | |

Remarks

- (1) OVERSIZED(O.S=0.25) PART.
- (2) OVERSIZED(O.S=0.5) PART.
- (3) UNDERSIZED(U.S=0.25) PART.
- (4) UNDERSIZED(U.S=0.5) PART.

Fig.2. CRANK, ROD & PISTON

Fig.2 CRANK, ROD & PISTON



(A)=L40AE-DGMO (D)=L60AE-DEGMO
 (B)=L40AE-DEGMO (E)=L90AE-DGMO
 (C)=L60AE-DGMO (F)=L90AE-DEGMO

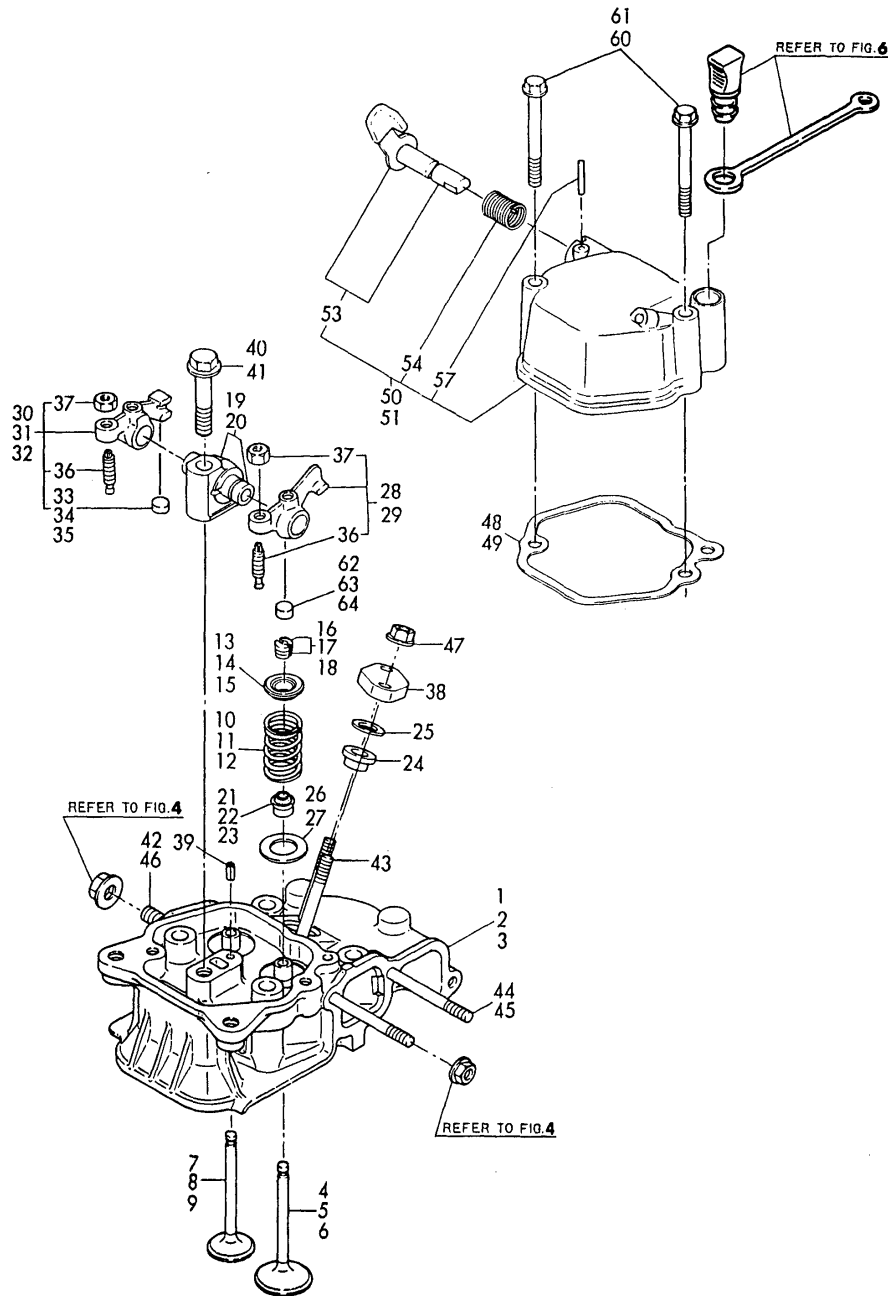
| No. | Lev. | Parts No. | Description | Q'ty | | | | | | I | R |
|------|------|-----------------------|----------------------|------|-----|-----|-----|-----|-----|---|---|
| | | | | (A) | (B) | (C) | (D) | (E) | (F) | | |
| 61 | 2 | 22312-030080 | PIN, PARALLEL M3X 8 | 2 | 2 | 2 | 2 | | | | |
| 62 | 2 | 124060-23100 | BEARING, PISTON PIN | | | | | 1 | 1 | | |
| 63 | 2 | 714250-23600 | BEARING, CRANK PIN | 1 | 1 | | | | | | |
| 64 | 2 | 714350-23600 | BEARING, CRANK PIN | | | 1 | 1 | | | | |
| 65 | 2 | 714650-23600 | BEARING, CRANK PIN | | | | | 1 | 1 | | |
| 67 | 1 | 714770-28510 | SHAFT ASSY, BALANCER | 1 | 1 | | | | | | |
| 67-1 | 1 | 714770-28511 | SHAFT ASSY, BALANCER | 1 | 1 | | | | | | R |
| | | (A=EZZZZZ) (B=EZZZZZ) | | | | | | | | | |
| 67-2 | 1 | 714770-28512 | SHAFT ASSY, BALANCER | 1 | 1 | | | | | | R |
| | | (A=EZZZZZ) (B=EZZZZZ) | | | | | | | | | |
| 68 | 1 | 714870-28510 | SHAFT ASSY, BALANCER | | | 1 | 1 | | | | |
| 69 | 1 | 714689-28510 | SHAFT ASSY, BALANCER | | | | | 1 | 1 | | |
| 71 | 1 | 24101-062024 | BEARING, BALL 6202 | 2 | 2 | 2 | 2 | | | | |
| 72 | 1 | 24101-062034 | BEARING, BALL 6203 | | | | | 2 | 2 | | |
| 73 | 1 | 714280-22580 | PISTON ASSY, 0.50 OS | 1 | 1 | | | | | | 2 |
| 74 | 1 | 714380-22580 | PISTON ASSY, 0.50 OS | | | 1 | 1 | | | | 2 |
| 75 | 1 | 714660-22580 | PISTON ASSY, 0.50 OS | | | | | 1 | 1 | | 2 |
| 77 | 2 | 714250-22550 | RING SET, 0.50 OS | 1 | 1 | | | | | | 2 |
| 78 | 2 | 714350-22550 | RING SET, 0.50 OS | | | 1 | 1 | | | | 2 |
| 79 | 2 | 714650-22550 | RING SET, 0.50 OS | | | | | 1 | 1 | | 2 |
| 81 | 1 | 714250-23610 | BEARING ASSY, 0.25 | 1 | 1 | | | | | | 3 |
| 82 | 1 | 714350-23610 | BEARING ASSY, 0.25 | | | 1 | 1 | | | | 3 |
| 83 | 1 | 714650-23610 | BEARING ASSY, 0.25 | | | | | 1 | 1 | | 3 |
| 84 | 1 | 714250-23620 | BEARING, 0.50 US | 1 | 1 | | | | | | 4 |
| 85 | 1 | 714350-23620 | BEARING, 0.50 US | | | 1 | 1 | | | | 4 |
| 86 | 1 | 714650-23620 | BEARING, 0.50 US | | | | | 1 | 1 | | 4 |

Remarks

- (1) OVERSIZED(O.S=0.25) PART.
- (2) OVERSIZED(O.S=0.5) PART.
- (3) UNDERSIZED(U.S=0.25) PART.
- (4) UNDERSIZED(U.S=0.5) PART.

Fig.3. CYLINDER HEAD

Fig.3 CYLINDER HEAD



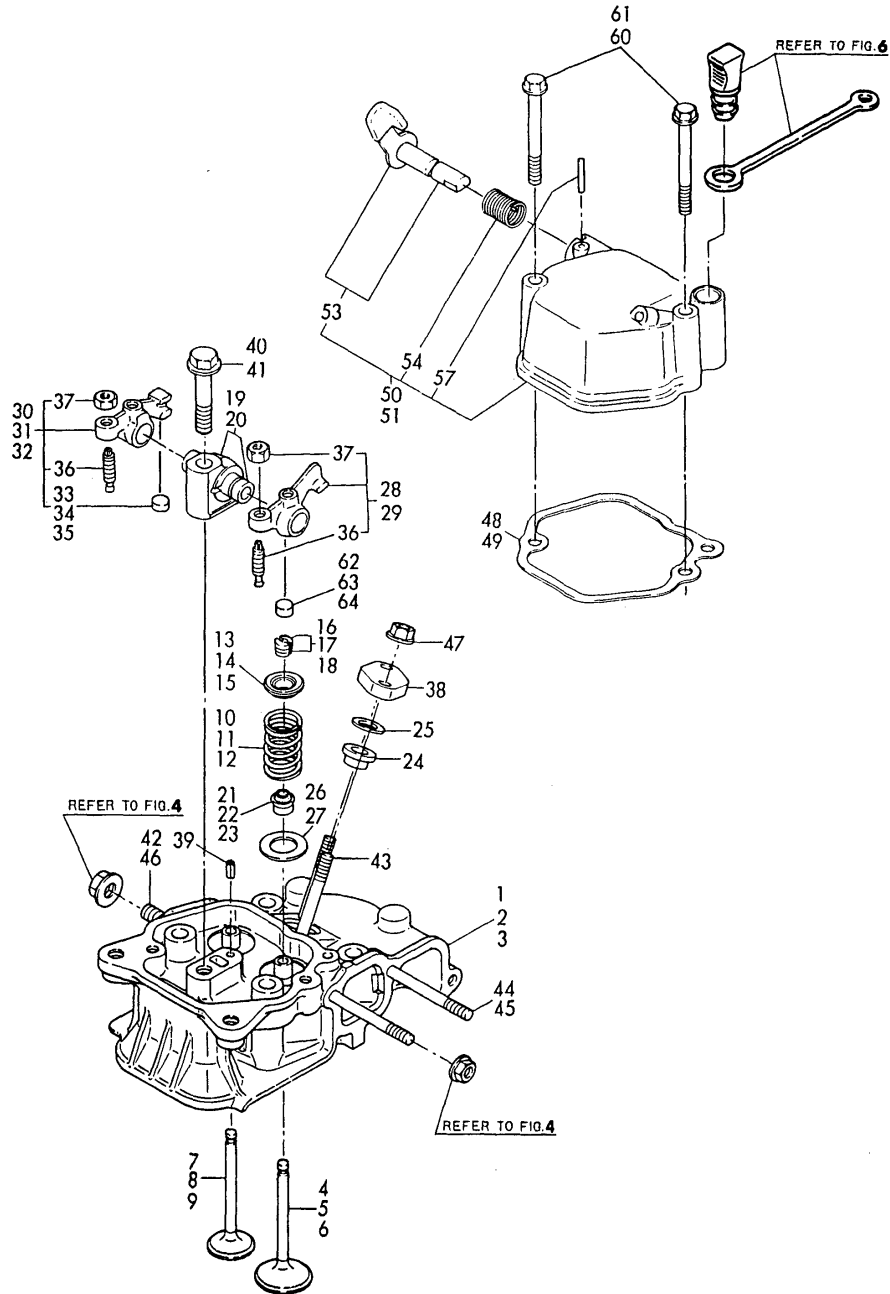
(A)=L40AE-DGMO
(B)=L40AE-DEGMO
(C)=L60AE-DGMO

(D)=L60AE-DEGMO
(E)=L90AE-DGMO
(F)=L90AE-DEGMO

| No. | Lev. | Parts No. | Description | Q'ty | | | | | | I | R |
|-----|------|--------------|----------------------|------|-----|-----|-----|-----|-----|---|---|
| | | | | (A) | (B) | (C) | (D) | (E) | (F) | | |
| 1 | 1 | 114250-11020 | HEAD ASSY, CYLINDER | 1 | 1 | | | | | | |
| 2 | 1 | 114350-11021 | HEAD ASSY, CYLINDER | | | 1 | 1 | | | | |
| 3 | 1 | 114650-11010 | HEAD ASSY, CYLINDER | | | | | 1 | 1 | | |
| 4 | 1 | 114250-11101 | VALVE, INTAKE | 1 | 1 | | | | | | |
| 5 | 1 | 114350-11101 | VALVE, INTAKE | | | 1 | 1 | | | | |
| 6 | 1 | 114650-11100 | VALVE, INTAKE | | | | | | | 1 | 1 |
| 7 | 1 | 114250-11113 | VALVE, EXHAUST | 1 | 1 | | | | | | |
| 8 | 1 | 114350-11113 | VALVE, EXHAUST | | | 1 | 1 | | | | |
| 9 | 1 | 114654-11110 | VALVE, EXHAUST | | | | | | | 1 | 1 |
| 10 | 1 | 114250-11120 | SPRING, VALVE | 2 | 2 | | | | | | |
| 11 | 1 | 114350-11120 | SPRING, VALVE | | | 2 | 2 | | | | |
| 12 | 1 | 114650-11121 | SPRING, VALVE | | | | | 2 | 2 | | |
| 13 | 1 | 114250-11180 | RETAINER, SPRING | 2 | 2 | | | | | | |
| 14 | 1 | 101158-11180 | RETAINER, SPRING | | | 2 | 2 | | | | |
| 15 | 1 | 119620-11180 | RETAINER, SPRING | | | | | 2 | 2 | | |
| 16 | 1 | 714250-11570 | COTTER ASSY | 2 | 2 | | | | | | |
| 17 | 1 | 27310-060001 | COTTER, 6 | | | 2 | 2 | | | | |
| 18 | 1 | 27310-070001 | COTTER, 7 | | | | | 2 | 2 | | |
| 19 | 1 | 114250-11290 | SUPPORT, ROCKER ARM | 1 | 1 | 1 | 1 | | | | |
| 20 | 1 | 114650-11261 | SUPPORT, ROCKER ARM | | | | | | | 1 | 1 |
| 21 | 1 | 114250-11340 | SEAL, VALVE STEM | 2 | 2 | | | | | | |
| 22 | 1 | 114350-11340 | SEAL, VALVE STEM | | | 2 | 2 | | | | |
| 23 | 1 | 114650-11340 | SEAL, VALVE STEM | | | | | | | 2 | 2 |
| 24 | 1 | 114250-11460 | GASKET, NOZZLE | 1 | 1 | 1 | 1 | 1 | 1 | 1 | 1 |
| 25 | 1 | 114350-11470 | SPACER, NOZZLE | 1 | 1 | 1 | 1 | 1 | 1 | 1 | 1 |
| 26 | 1 | 114250-11600 | WASHER | 2 | 2 | 2 | 2 | | | | |
| 27 | 1 | 114650-11600 | WASHER | | | | | | | 2 | 2 |
| 28 | 1 | 114250-11651 | ARM, ROCKER | 1 | 1 | 1 | 1 | | | | |
| 29 | 1 | 114650-11652 | ARM, ROCKER | | | | | | | 1 | 1 |
| 30 | 1 | 714270-11660 | ARM ASSY, ROCKER | 1 | 1 | | | | | | |
| 31 | 1 | 714370-11660 | ARM ASSY, ROCKER | | | 1 | 1 | | | | |
| 32 | 1 | 714670-11660 | ARM ASSY, ROCKER | | | | | | | 1 | 1 |
| 33 | 2 | 119260-11370 | CAP, VALVE | 1 | 1 | | | | | | |
| 34 | 2 | 105010-11490 | CAP, VALVE | | | 1 | 1 | | | | |
| 35 | 2 | 104211-11370 | CAP, VALVE | | | | | | | 1 | 1 |
| 36 | 2 | 114250-11240 | SCREW, VALVE ADJUST | 2 | 2 | 2 | 2 | 2 | 2 | 2 | 2 |
| 37 | 2 | 26756-060002 | NUT, LOCK M6 | 2 | 2 | 2 | 2 | 2 | 2 | 2 | 2 |
| 38 | 1 | 114250-11900 | RETAINER, NOZZLE | 1 | 1 | 1 | 1 | 1 | 1 | 1 | 1 |
| 39 | 1 | 22351-040008 | PIN, SPRING 4.0X 8 | 1 | 1 | 1 | 1 | 1 | 1 | 1 | 1 |
| 40 | 1 | 26106-080452 | BOLT, M8X 45 PLATED | 1 | 1 | 1 | 1 | | | | |
| 41 | 1 | 26106-100552 | BOLT, M10X 55 PLATED | | | | | | | 1 | 1 |
| 42 | 1 | 26216-080182 | STUD, M8X 18 | 2 | 2 | 2 | 2 | | | | |
| 43 | 1 | 26226-060502 | STUD, M6X 50 | 2 | 2 | 2 | 2 | 2 | 2 | 2 | 2 |
| 44 | 1 | 26226-060552 | STUD, M6X 55 | 2 | 2 | 2 | 2 | | | | |
| 45 | 1 | 26226-060752 | STUD, M6X 75 | | | | | | | 2 | 2 |
| 46 | 1 | 26226-080202 | STUD, M8X 20 | | | | | | | 2 | 2 |
| 47 | 1 | 26366-060002 | NUT, M6 | 2 | 2 | 2 | 2 | 2 | 2 | 2 | 2 |
| 48 | 1 | 114250-11310 | GASKET, BONNET | 1 | 1 | 1 | 1 | | | | |
| 49 | 1 | 114650-11310 | GASKET, BONNET | | | | | | | 1 | 1 |
| 50 | 1 | 114250-11951 | BONNET ASSY, HEAD | 1 | 1 | 1 | 1 | | | | |
| 51 | 1 | 114650-11951 | BONNET ASSY, HEAD | | | | | | | 1 | 1 |

Fig.3. CYLINDER HEAD

Fig.3 CYLINDER HEAD



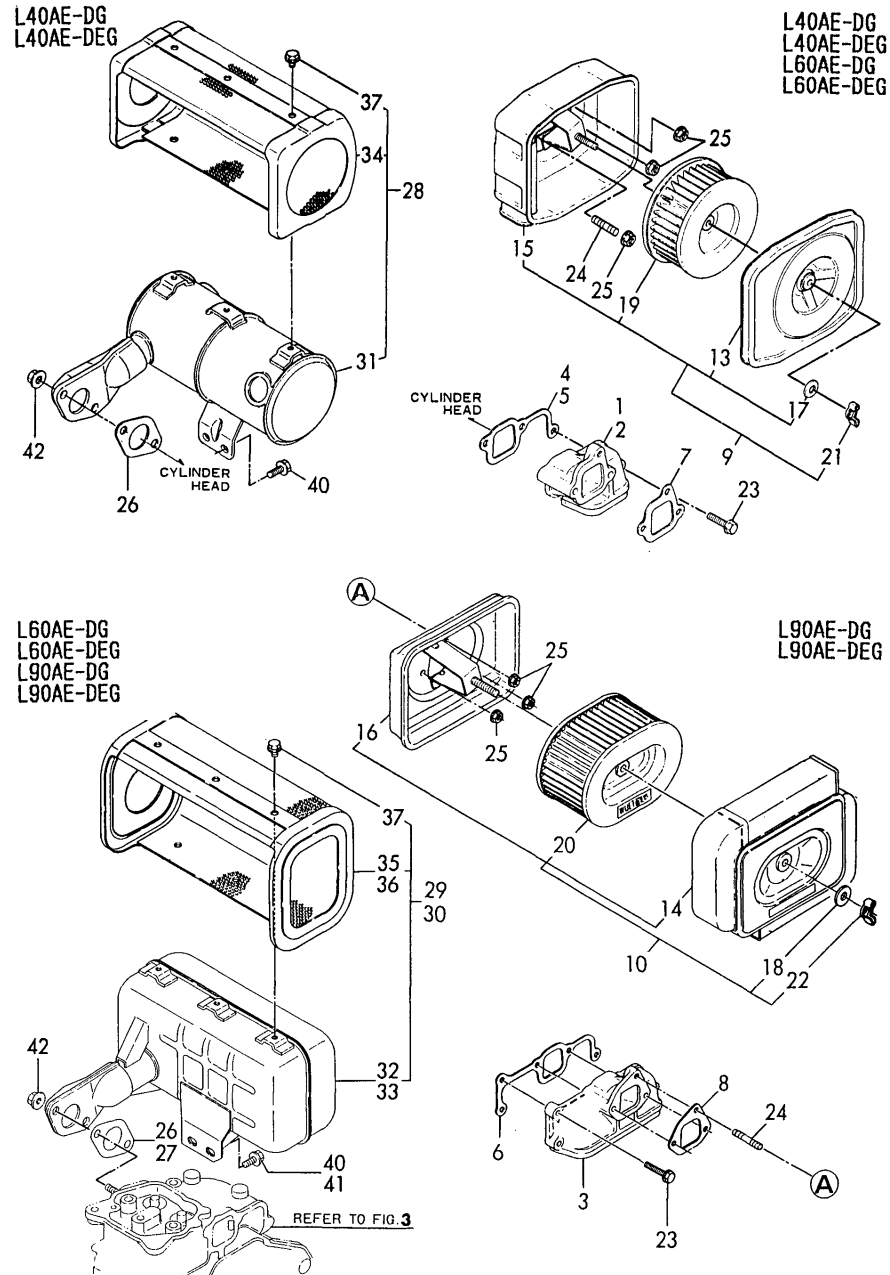
(A)=L40AE-DGMO
(B)=L40AE-DEGMO
(C)=L60AE-DGMO

(D)=L60AE-DEGMO
(E)=L90AE-DGMO
(F)=L90AE-DEGMO

| No. | Lev. | Parts No. | Description | Q'ty | | | | | | I | R |
|-----|------|--------------|-----------------------|------|-----|-----|-----|-----|-----|---|---|
| | | | | (A) | (B) | (C) | (D) | (E) | (F) | | |
| 53 | 2 | 114250-03591 | LEVER ASSY | 1 | 1 | 1 | 1 | 1 | 1 | | |
| 54 | 2 | 114250-03640 | SPRING, DECOMPRESSION | 1 | 1 | 1 | 1 | 1 | 1 | | |
| 57 | 2 | 22312-030160 | PIN, PARALLEL M3X16 | 1 | 1 | 1 | 1 | 1 | 1 | | |
| 60 | 1 | 26106-060552 | BOLT, M6X 55 PLATED | 2 | 2 | 2 | 2 | | | | |
| 61 | 1 | 26106-060702 | BOLT, M6X 70 PLATED | | | | | 2 | 2 | | |
| 62 | 1 | 119260-11370 | CAP, VALVE | 1 | 1 | | | | | | |
| 63 | 1 | 105010-11490 | CAP, VALVE | | | 1 | 1 | | | | |
| 64 | 1 | 104211-11370 | CAP, VALVE | | | | | 1 | 1 | | |

Fig.4. AIR CLEANER & SILENCER

Fig.4 AIR CLEANER & SILENCER



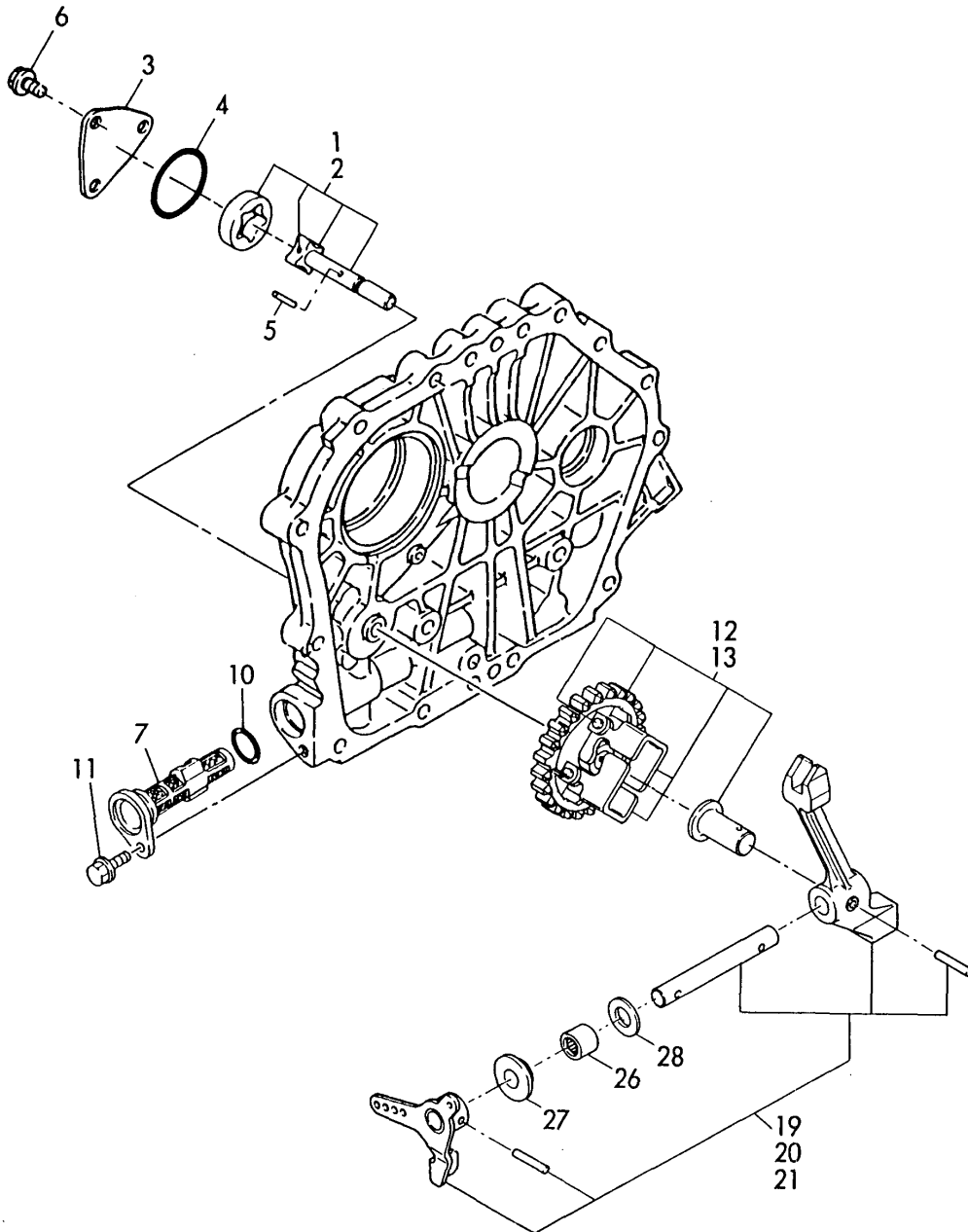
(A)=L40AE-DGMO
(B)=L40AE-DEGMO
(C)=L60AE-DGMO

(D)=L60AE-DEGMO
(E)=L90AE-DGMO
(F)=L90AE-DEGMO

| No. | Lev. | Parts No. | Description | Q'ty | | | | | | I | R |
|-----|------|--------------|---------------------|------|-----|-----|-----|-----|-----|----|----|
| | | | | (A) | (B) | (C) | (D) | (E) | (F) | | |
| 1 | 1 | 114250-12010 | PIPE, AIR INTAKE | 1 | 1 | | | | | | |
| 2 | 1 | 114350-12011 | PIPE, AIR INTAKE | | | 1 | 1 | | | | |
| 3 | 1 | 114650-12020 | PIPE, AIR INTAKE | | | | | 1 | 1 | | |
| 4 | 1 | 114250-12200 | GASKET | 1 | 1 | | | | | | |
| 5 | 1 | 114350-12201 | GASKET | | | 1 | 1 | | | | |
| 6 | 1 | 114650-12300 | GASKET | | | | | | | 1 | 1 |
| 7 | 1 | 114250-12210 | GASKET, AIR CLEANER | 1 | 1 | 1 | 1 | | | | |
| 8 | 1 | 114650-12210 | GASKET, AIR CLEANER | | | | | | | 1 | 1 |
| 9 | 1 | 714250-12560 | CLEANER ASSY, AIR | 1 | 1 | 1 | 1 | | | | |
| 10 | 1 | 714650-12560 | CLEANER ASSY, AIR | | | | | | | 1 | 1 |
| 13 | 3 | 114250-12520 | COVER, AIR CLEANER | 1 | 1 | 1 | 1 | | | | |
| 14 | 3 | 114650-12520 | COVER, AIR CLEANER | | | | | | | 1 | 1 |
| 15 | 3 | 114250-12530 | CASE ASSY, CLEANER | 1 | 1 | 1 | 1 | | | | |
| 16 | 3 | 114650-12530 | CASE ASSY, CLEANER | | | | | | | 1 | 1 |
| 17 | 3 | 114250-12560 | WASHER, SEAL M6 | 1 | 1 | 1 | 1 | | | | |
| 18 | 3 | 114252-12560 | WASHER, SEAL M8 | | | | | | | 1 | 1 |
| 19 | 3 | 114250-12580 | ELEMENT | 1 | 1 | 1 | 1 | | | | |
| 20 | 3 | 114650-12590 | ELEMENT ASSY | | | | | | | 1 | 1 |
| 20A | 4 | 114650-12540 | ELEMENT | | | | | | | 1 | 1 |
| 20B | 4 | 114650-12550 | FILTER, PRE | | | | | | | 1 | 1 |
| 21 | 2 | 114250-12550 | NUT, WING M6 | 1 | 1 | 1 | 1 | | | | |
| 22 | 2 | 114252-12550 | NUT, WING M8 | | | | | | | 1 | 1 |
| 23 | 1 | 26106-060252 | BOLT, M6X 25 PLATED | 1 | 1 | 2 | 2 | 3 | 3 | | |
| 24 | 1 | 26226-060142 | STUD, M6X 14 | 1 | 1 | 1 | 1 | 1 | 1 | | |
| 25 | 1 | 26366-060002 | NUT, M6 | 3 | 3 | 3 | 3 | 3 | 3 | | |
| 26 | 1 | 114250-13200 | GASKET, MUFFLER | 1 | 1 | 1 | 1 | | | | |
| 27 | 1 | 114650-13200 | GASKET, MUFFLER | | | | | | | 1 | 1 |
| 28 | 1 | 114770-13550 | MUFFLER ASSY | 1 | 1 | | | | | | |
| 29 | 1 | 114870-13550 | MUFFLER ASSY | | | 1 | 1 | | | | |
| 30 | 1 | 114970-13550 | MUFFLER ASSY | | | | | | | 1 | 1 |
| 31 | 2 | 114770-13560 | MUFFLER | 1 | 1 | | | | | | |
| 32 | 2 | 114870-13560 | SILENCER | | | 1 | 1 | | | | |
| 33 | 2 | 114970-13560 | MUFFLER | | | | | | | 1 | 1 |
| 34A | 2 | 114870-13700 | COVER | 1 | 1 | | | | | | |
| 34B | 2 | 114870-13710 | COVER | 1 | 1 | | | | | | |
| 34C | 2 | 114870-13720 | COVER | 2 | 2 | | | | | | |
| 35A | 2 | 114870-13700 | COVER | | | 1 | 1 | | | | |
| 35B | 2 | 114870-13710 | COVER | | | 1 | 1 | | | | |
| 35C | 2 | 114870-13720 | COVER | | | 2 | 2 | | | | |
| 36A | 2 | 114970-13700 | COVER | | | | | | | 1 | 1 |
| 36B | 2 | 114970-13710 | COVER | | | | | | | 2 | 2 |
| 37 | 2 | 26106-060082 | BOLT, M6X 8 PLATED | 12 | 12 | 12 | 12 | | | | |
| 37A | 2 | 160260-01580 | BOLT, FLANGE M6X6 | | | | | | | 10 | 10 |
| 40 | 1 | 26106-060122 | BOLT, M6X 12 PLATED | 2 | 2 | 2 | 2 | | | | |
| 41 | 1 | 26106-080162 | BOLT, M8X 16 PLATED | | | | | | | 2 | 2 |
| 42 | 1 | 26366-080002 | NUT, M8 | 2 | 2 | 2 | 2 | 2 | 2 | | |

Fig.5. LUB. OIL PUMP & GOVERNOR

Fig.5 LUB. OIL & GOVERNOR



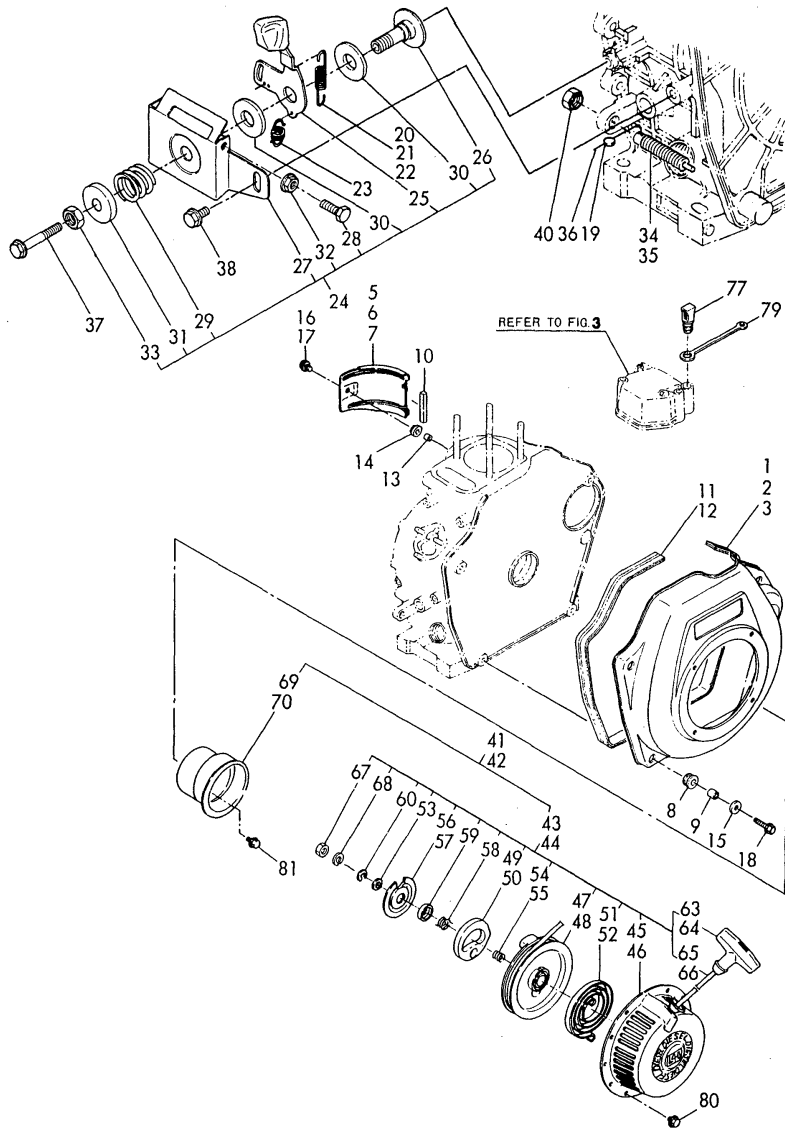
(A)=L40AE-DGMO
(B)=L40AE-DEGMO
(C)=L60AE-DGMO

(D)=L60AE-DEGMO
(E)=L90AE-DGMO
(F)=L90AE-DEGMO

| No. | Lev. | Parts No. | Description | Qty | | | | | | I | R |
|-----|------|--------------|----------------------|-----|-----|-----|-----|-----|-----|---|---|
| | | | | (A) | (B) | (C) | (D) | (E) | (F) | | |
| 1 | 1 | 114250-32010 | PUMP ASSY, OIL | 1 | 1 | 1 | 1 | | | | |
| 2 | 1 | 114650-32010 | PUMP ASSY, OIL | | | | | | 1 | 1 | |
| 3 | 1 | 114250-32070 | COVER | 1 | 1 | 1 | 1 | 1 | 1 | 1 | |
| 4 | 1 | 103338-32570 | O-RING | 1 | 1 | 1 | 1 | 1 | 1 | 1 | |
| 5 | 1 | 22312-030160 | PIN, PARALLEL M3X16 | 1 | 1 | 1 | 1 | 1 | 1 | 1 | |
| 6 | 1 | 26476-060142 | SCREW, TAPPING M6X14 | 3 | 3 | 3 | 3 | 3 | 3 | 3 | |
| 7 | 1 | 114250-35070 | FILTER, OIL | 1 | 1 | 1 | 1 | 1 | 1 | 1 | |
| 10 | 1 | 24341-000224 | O-RING, 1AS22.4 | 1 | 1 | 1 | 1 | 1 | 1 | 1 | |
| 11 | 1 | 26106-060162 | BOLT, M6X 16 PLATED | 1 | 1 | 1 | 1 | 1 | 1 | 1 | |
| 12 | 1 | 714770-61700 | GOVERNOR ASSY | 1 | 1 | 1 | 1 | | | | |
| 13 | 1 | 714970-61700 | GOVERNOR ASSY | | | | | | 1 | 1 | |
| 19 | 1 | 714250-61500 | LEVER ASSY, GOVERNOR | 1 | 1 | | | | | | |
| 20 | 1 | 714350-61500 | LEVER ASSY, GOVERNOR | | | 1 | 1 | | | | |
| 21 | 1 | 714650-61500 | LEVER ASSY, GOVERNOR | | | | | | 1 | 1 | |
| 26 | 1 | 121450-61520 | BEARING, NEEDLE 8 | 2 | 2 | 2 | 2 | 2 | 2 | 2 | |
| 27 | 1 | 114250-61900 | BUSH | 1 | 1 | 1 | 1 | 1 | 1 | 1 | |
| 28 | 1 | 22137-080000 | WASHER, 8 | 1 | 1 | 1 | 1 | 1 | 1 | 1 | |

Fig.6. COOLING & STARTING DEVICE

Fig.6 STARTING & CONTROL

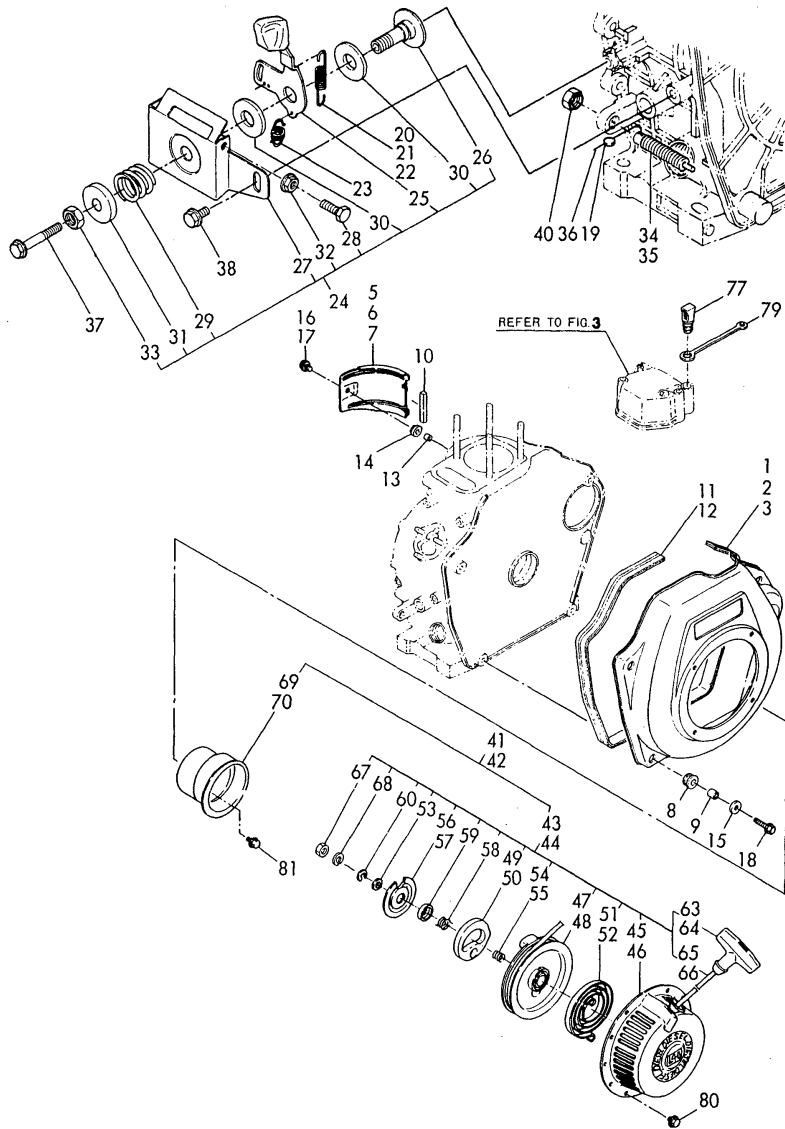


| No. | Lev. | Parts No. | Description | Q'ty | | | | | | I | R |
|-----|------|--------------|----------------------|------|-----|-----|-----|-----|-----|---|---|
| | | | | (A) | (B) | (C) | (D) | (E) | (F) | | |
| 1 | 1 | 114780-45100 | CASE, COOLING FAN | 1 | 1 | | | | | | |
| 2 | 1 | 114360-45101 | CASE, COOLING FAN | | | 1 | 1 | | | | |
| 3 | 1 | 114668-45102 | CASE, COOLING FAN | | | | | 1 | 1 | | |
| 5 | 1 | 114250-45211 | COVER | 1 | 1 | | | | | | |
| 6 | 1 | 114870-45200 | COVER | | | 1 | 1 | | | | |
| 7 | 1 | 114650-45200 | COVER | | | | | | | 1 | 1 |
| 8 | 1 | 114250-45300 | ABSORBER | 4 | 4 | 5 | 5 | 4 | 4 | | |
| 9 | 1 | 114250-45310 | COLLAR | 4 | 4 | 5 | 5 | 4 | 4 | | |
| 10 | 1 | 114350-45320 | RUBBER, SEAL | | | 1 | 1 | 1 | 1 | | |
| 11 | 1 | 114250-45330 | SEAL, FAN CASE L=875 | 1 | 1 | 1 | 1 | | | | |
| 12 | 1 | 114650-45330 | SEAL, FAN CASE L=950 | | | | | | | 1 | 1 |
| 13 | 1 | 114350-45340 | COLLAR | | | | 1 | 1 | 1 | 1 | |
| 14 | 1 | 183720-55210 | GROMMET | | | | 1 | 1 | 1 | 1 | |
| 15 | 1 | 160120-76940 | WASHER | 4 | 4 | 5 | 5 | 4 | 4 | | |
| 16 | 1 | 26476-060142 | SCREW, TAPPING M6X14 | 1 | 1 | | | | | | |
| 17 | 1 | 26476-060202 | SCREW, TAPPING M6X20 | | | | 1 | 1 | 1 | 1 | |
| 18 | 1 | 26476-060252 | SCREW, TAPPING M6X25 | 4 | 4 | 5 | 5 | 4 | 4 | | |
| 19 | 1 | 135210-61090 | LEAD | 2 | 2 | 2 | 2 | 2 | 2 | | |
| 20 | 1 | 114770-66010 | SPRING, REGULATOR | 1 | 1 | | | | | | |
| 21 | 1 | 114870-66010 | SPRING, REGULATOR | | | 1 | 1 | | | | |
| 22 | 1 | 114970-66010 | SPRING, REGULATOR | | | | | | | 1 | 1 |
| 23 | 1 | 114250-66200 | SPRING, RETURN | 1 | 1 | 1 | 1 | 1 | 1 | | |
| 24 | 1 | 183250-66500 | BRACKET ASSY | 1 | 1 | 1 | 1 | 1 | 1 | | |
| 25 | 2 | 183250-66050 | HANDLE, REGULATOR | 1 | 1 | 1 | 1 | 1 | 1 | | |
| 26 | 2 | 183250-66070 | SHAFT, HANDLE | 1 | 1 | 1 | 1 | 1 | 1 | | |
| 27 | 2 | 183250-66100 | BRACKET, RADIATOR | 1 | 1 | 1 | 1 | 1 | 1 | | |
| 28 | 2 | 114250-66440 | BOLT, ADJUSTING | 1 | 1 | 1 | 1 | 1 | 1 | | |
| 29 | 2 | 104200-66820 | SPRING | 1 | 1 | 1 | 1 | 1 | 1 | | |
| 30 | 2 | 104200-66830 | PLATE, FRICTION | 2 | 2 | 2 | 2 | 2 | 2 | | |
| 31 | 2 | 104200-66850 | WASHER | 1 | 1 | 1 | 1 | 1 | 1 | | |
| 32 | 2 | 26696-100002 | NUT, LOCK M10 | 1 | 1 | 1 | 1 | 1 | 1 | | |
| 33 | 2 | 26757-060002 | NUT, LOCK M6 | 1 | 1 | 1 | 1 | 1 | 1 | | |
| 34 | 1 | 114250-66550 | LIMITER ASSY, FUEL | 1 | 1 | 1 | 1 | | | | |
| 35 | 1 | 114650-66600 | LIMITER ASSY, FUEL | | | | | | | 1 | 1 |
| 36 | 1 | 22451-060000 | WIRE, 0.6 | 2 | 2 | 2 | 2 | 2 | 2 | | |
| 37 | 1 | 26106-060452 | BOLT, M6X 45 PLATED | 1 | 1 | 1 | 1 | 1 | 1 | | |
| 38 | 1 | 26476-060142 | SCREW, TAPPING M6X14 | 1 | 1 | 1 | 1 | 1 | 1 | | |
| 40 | 1 | 26696-100002 | NUT, LOCK M10 | 1 | 1 | 1 | 1 | 1 | 1 | | |
| 41 | 1 | 114260-76050 | STARTER ASSY, RECOIL | 1 | 1 | | | | | | |
| 42 | 1 | 114880-76050 | STARTER ASSY, RECOIL | | | 1 | 1 | | | | |
| 42A | 1 | 114660-76050 | STARTER ASSY, RECOIL | | | | | | | 1 | 1 |
| 43 | 2 | 114260-76250 | STARTER ASSY, RECOIL | 1 | 1 | | | | | | |
| 44 | 2 | 114880-76250 | STARTER ASSY, RECOIL | | | 1 | 1 | | | | |
| 44A | 2 | 114660-76250 | STARTER ASSY, RECOIL | | | | | | | 1 | 1 |
| 45 | 3 | 114260-76520 | CASE, STARTER | 1 | 1 | | | | | | |
| 46 | 3 | 114880-76510 | CASE, STARTER | | | 1 | 1 | | | | |
| 46A | 3 | 114660-76530 | CASE, STARTER | | | | | | | 1 | 1 |
| 47 | 3 | 160260-76520 | REEL | 1 | 1 | | | | | | |
| 48 | 3 | 160810-76520 | REEL | | | 1 | 1 | | | | |
| 48A | 3 | 114650-76520 | REEL | | | | | | | 1 | 1 |
| 49 | 3 | 160260-76530 | RATCHET | 1 | 1 | | | | | | |

Remarks
 *This item is applicable to (A)=
 EZZZZZ-1 or previous machines
 Refer to Fig.11.

Fig.6. COOLING & STARTING DEVICE

Fig.6 STARTING & CONTROL

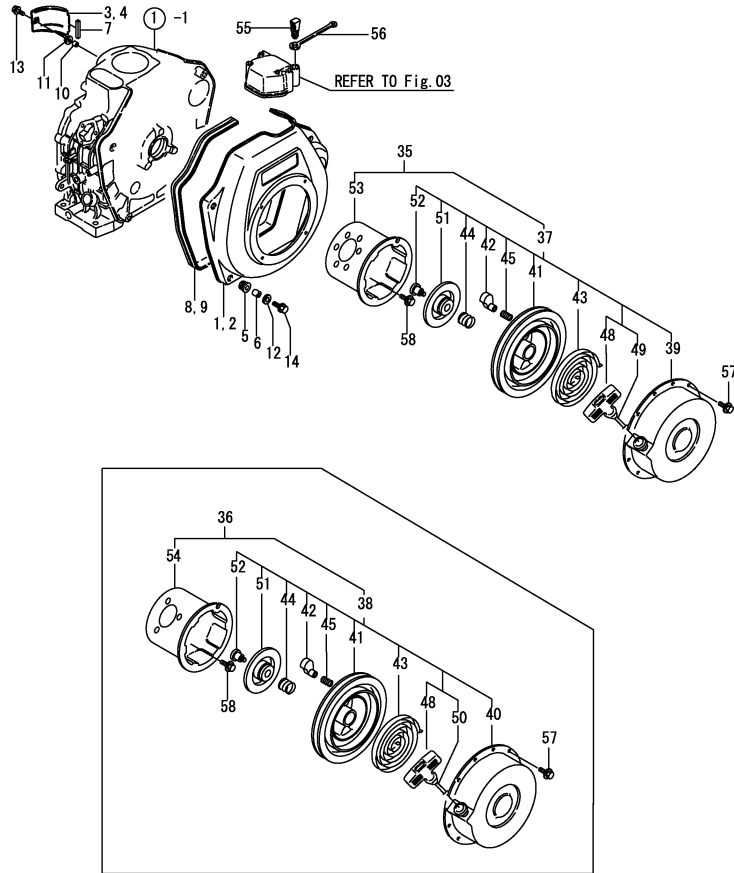


(A)=L40AE-DGMO
 (B)=L40AE-DEGMO
 (C)=L60AE-DGMO
 (D)=L60AE-DEGMO
 (E)=L90AE-DGMO
 (F)=L90AE-DEGMO

| No. | Lev. | Parts No. | Description | Q'ty | | | | | | I | R |
|-------|------|--------------|---------------------|------|-----|------------|-----|-----|-----|------------|---|
| | | | | (A) | (B) | (C) | (D) | (E) | (F) | | |
| 50 | 3 | 160840-76530 | RATCHET | | | 1 | 1 | | | | |
| 50A | 3 | 160910-76530 | RATCHET | | | | | | 1 | 1 | |
| 51 | 3 | 160260-76540 | SPRING, SPIRAL | 1 | 1 | | | | | | |
| 52 | 3 | 160810-76540 | SPRING, SPIRAL | | | 1 | 1 | | | | |
| 52A | 3 | 114650-76540 | SPRING, SPIRAL | | | | | | 1 | 1 | |
| 53 | 3 | 160260-76550 | WASHER, THRUST | 1 | 1 | | | | | | |
| 53A | 3 | 160910-76550 | WASHER, THRUST | | | | | | 1 | 1 | |
| 54 | 3 | 160260-76560 | SPRING, FRICTION | 1 | 1 | | | | | | |
| 55 | 3 | 160840-76560 | SPRING, FRICTION | | | 1 | 1 | | | | |
| 55A | 3 | 160910-76560 | SPRING, FRICTION | | | | | | 1 | 1 | |
| 56 | 3 | 160260-76590 | PLATE, FRICTION | 1 | 1 | | | | | | |
| 57 | 3 | 160810-76580 | PLATE, FRICTION | | | 1 | 1 | | | | |
| 57A | 3 | 160910-76580 | PLATE, FRICTION | | | | | | 1 | 1 | |
| | | | | | | (E=EZZZZZ) | | | | (F=EZZZZZ) | |
| 58 | 3 | 160290-76570 | SPRING, RETURN | 1 | 1 | | | | | | |
| 58A | 3 | 160910-76570 | SPRING, RETURN | | | | | | 1 | 1 | |
| 59 | 3 | 160260-76580 | COVER | 1 | 1 | | | | | | |
| 60 | 3 | 160260-76600 | CIRCLIP | 1 | 1 | | | | | | |
| 63 | 3 | 160260-76620 | KNOB, STARTER | 1 | 1 | | | | | | |
| 64 | 3 | 160810-76620 | KNOB, STARTER | | | 1 | 1 | | | | |
| 64A | 3 | 160910-76620 | KNOB, STARTER | | | | | | 1 | 1 | |
| 65 | 3 | 160260-76630 | ROPE, STARTER | 1 | 1 | | | | | | |
| 66 | 3 | 160810-76630 | ROPE, STARTER | | | 1 | 1 | | | | |
| 66A | 3 | 114650-76630 | ROPE, STARTER | | | | | | 1 | 1 | |
| 66B | 3 | 160910-76650 | WASHER, THRUST | | | | | | 1 | 1 | |
| 67 | 3 | 181130-76680 | NUT | | | 1 | 1 | | | | |
| 68 | 3 | 181130-76700 | WASHER | | | 1 | 1 | | | | |
| 68A | 3 | 22217-060000 | WASHER, SPRING 6 | | | | | | 1 | 1 | |
| 68B | 3 | 26717-060002 | NUT, M6 | | | | | | 1 | 1 | |
| 69 | 2 | 114250-76590 | PULLEY, STARTER | 1 | 1 | | | | | | |
| 70 | 2 | 114350-76590 | PULLEY, STARTER | | | 1 | 1 | | | | |
| 70A | 2 | 114660-76590 | PULLEY, STARTER | | | | | | 1 | 1 | |
| 70A-1 | 2 | 114660-76591 | PULLEY, STARTER | | | | | | 1 | 1 | S |
| | | | | | | (E=EZZZZZ) | | | | (F=EZZZZZ) | |
| 77 | 1 | 114250-76600 | PLUNGER | 1 | 1 | 1 | 1 | | | | |
| 79 | 1 | 114250-76610 | HOLDER, PLUNGER | 1 | 1 | 1 | 1 | | | | |
| 80 | 1 | 26106-060082 | BOLT, M6X 8 PLATED | 4 | 4 | 4 | 4 | 4 | 4 | 4 | |
| 81 | 1 | 26106-060122 | BOLT, M6X 12 PLATED | 3 | 3 | 3 | 3 | 4 | 4 | | |
| 81-1 | 1 | 26106-060122 | BOLT, M6X 12 PLATED | | | | | | 3 | 3 | K |
| | | | | | | (E=EZZZZZ) | | | | (F=EZZZZZ) | |

Remarks
 *This item is applicable to (A)=
 EZZZZZ-1 or previous machines
 Refer to Fig.11.

Fig.11. (6A)COOLING & STARTING DEVICE



(A)=L40AE-DGMO
(B)=L40AE-DEGMO
(C)=L60AE-DGMO

(D)=L60AE-DEGMO
(E)=L90AE-DGMO
(F)=L90AE-DEGMO

| No. | Lev. | Parts No. | Description | Q'ty | | | | | | I | R |
|-----|------|--------------|---|------|-----|------------|-----|-----|------------|---|---|
| | | | | (A) | (B) | (C) | (D) | (E) | (F) | | |
| 1 | 1 | 114360-45101 | CASE, COOLING FAN | | | 1 | 1 | | | | |
| 2 | 1 | 114668-45102 | CASE, COOLING FAN | | | | | | 1 | 1 | |
| 3 | 1 | 114870-45200 | COVER | | | 1 | 1 | | | | |
| 4 | 1 | 114650-45200 | COVER | | | | | | 1 | 1 | |
| 5 | 1 | 114250-45300 | ABSORBER | | | 5 | 5 | 4 | 4 | | |
| 6 | 1 | 114250-45310 | COLLAR | | | 5 | 5 | 4 | 4 | | |
| 7 | 1 | 114350-45320 | RUBBER, SEAL | | | 1 | 1 | 1 | 1 | | |
| 8 | 1 | 114250-45330 | SEAL, FAN CASE L=875 | | | 1 | 1 | | | | |
| 9 | 1 | 114650-45330 | SEAL, FAN CASE L=950 | | | | | | 1 | 1 | |
| 10 | 1 | 114350-45340 | COLLAR | | | 1 | 1 | 1 | 1 | | |
| 11 | 1 | 183720-55210 | GROMMET | | | 1 | 1 | 1 | 1 | | |
| 12 | 1 | 160120-76940 | WASHER | | | 5 | 5 | 4 | 4 | | |
| 13 | 1 | 26476-060202 | SCREW, TAPPING M6X20 | | | 1 | 1 | 1 | 1 | | |
| 14 | 1 | 26476-060252 | SCREW, TAPPING M6X25 | | | 5 | 5 | 4 | 4 | | |
| 35 | 1 | 114880-76051 | STARTER ASSY, RECOIL | | | 1 | 1 | | | | 1 |
| 36 | 1 | 114660-76052 | STARTER ASSY, RECOIL (C=EZZZZZ) (D=EZZZZZ) | | | | | 1 | 1 | | 2 |
| | | | | | | (E=EZZZZZ) | | | (F=EZZZZZ) | | |
| 37 | 2 | 114880-76251 | STARTER ASSY, RECOIL | | | 1 | 1 | | | | |
| 38 | 2 | 114660-76251 | STARTER ASSY, RECOIL | | | | | | 1 | 1 | |
| 39 | 3 | 114880-76511 | CASE, STARTER | | | 1 | 1 | | | | |
| 40 | 3 | 114660-76531 | CASE, STARTER | | | | | | 1 | 1 | |
| 41 | 3 | 114880-76520 | REEL | | | 1 | 1 | 1 | 1 | | |
| 42 | 3 | 114870-76530 | RATCHET | | | 2 | 2 | 2 | 2 | | |
| 43 | 3 | 114870-76540 | SPRING, SPIRAL | | | 1 | 1 | 1 | 1 | | |
| 44 | 3 | 114870-76560 | SPRING, FRICTION | | | 1 | 1 | 1 | 1 | | |
| 45 | 3 | 114870-76570 | SPRING, RETURN | | | 2 | 2 | 2 | 2 | | |
| 48 | 3 | 114870-76620 | KNOB, STARTER | | | 1 | 1 | 1 | 1 | | |
| 49 | 3 | 114870-76630 | ROPE, STARTER | | | 1 | 1 | | | | |
| 50 | 3 | 114650-76631 | ROPE, STARTER | | | | | | 1 | 1 | |
| 51 | 3 | 114880-76550 | GUIDE, RATCHET | | | 1 | 1 | 1 | 1 | | |
| 52 | 3 | 114870-76580 | SCREW | | | 1 | 1 | 1 | 1 | | |
| 53 | 2 | 114350-76591 | PULLEY, STARTER | | | 1 | 1 | | | | |
| 54 | 2 | 114660-76592 | PULLEY, STARTER | | | | | | 1 | 1 | |
| 55 | 1 | 114250-76600 | PLUNGER | | | 1 | 1 | | | | |
| 56 | 1 | 114250-76610 | HOLDER, PLUNGER | | | 1 | 1 | | | | |
| 57 | 1 | 26106-060082 | BOLT, M6X 8 PLATED | | | 4 | 4 | 4 | 4 | | |
| 58 | 1 | 26106-060122 | BOLT, M6X 12 PLATED | | | 3 | 3 | 3 | 3 | | |

Remarks

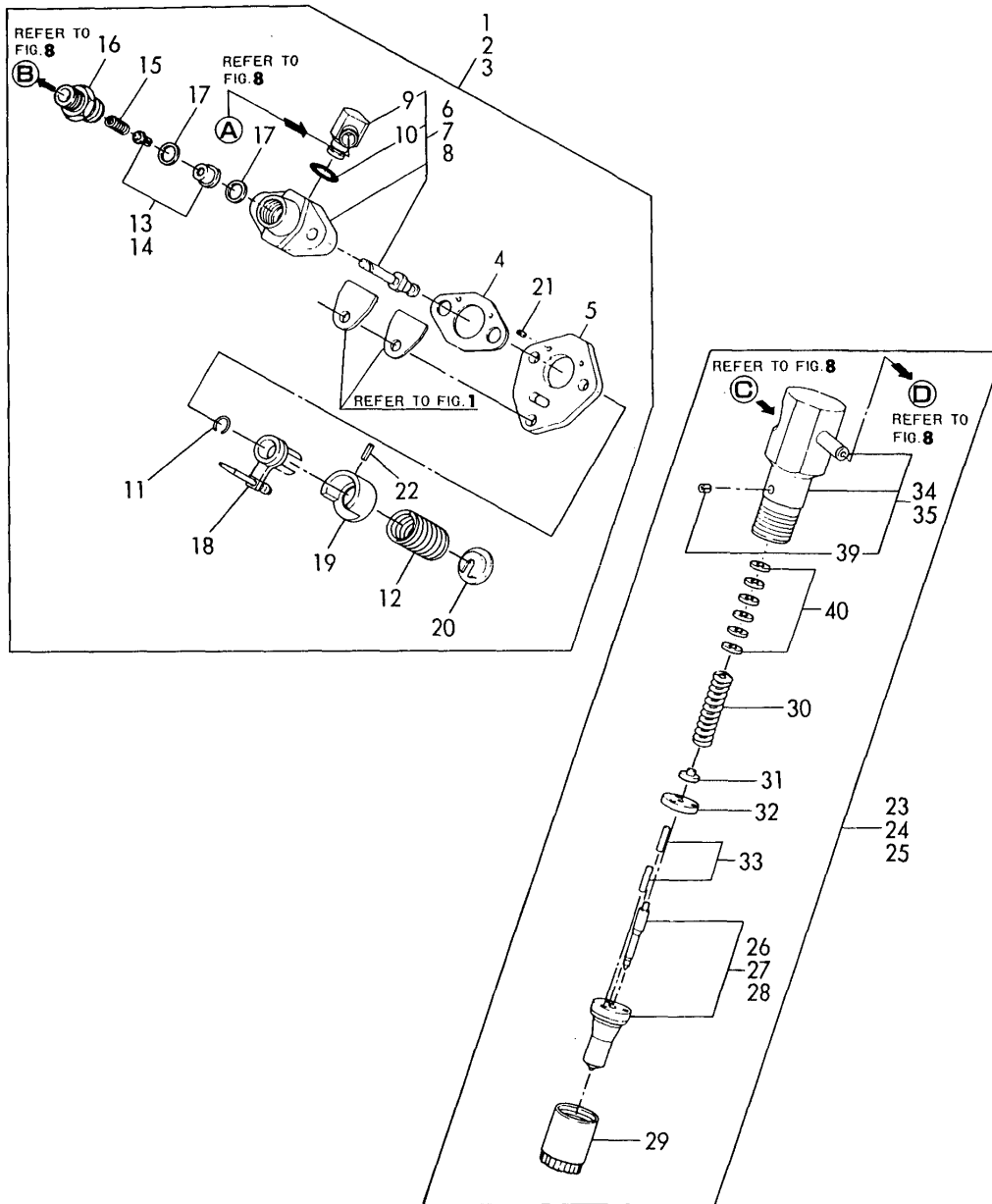
(1) Interchangeable by simultaneous replacement with Ref.37 and Ref.53.

(1) Interchangeable by simultaneous replacement with Ref.38 and Ref.54.

*This item is applicable to [(A)=EZZZZZ] or following machines. Refer to Fig.6.

Fig.7. FUEL INJECTION PUMP & VALVE

Fig.7 FUEL INJECTION DEVICE



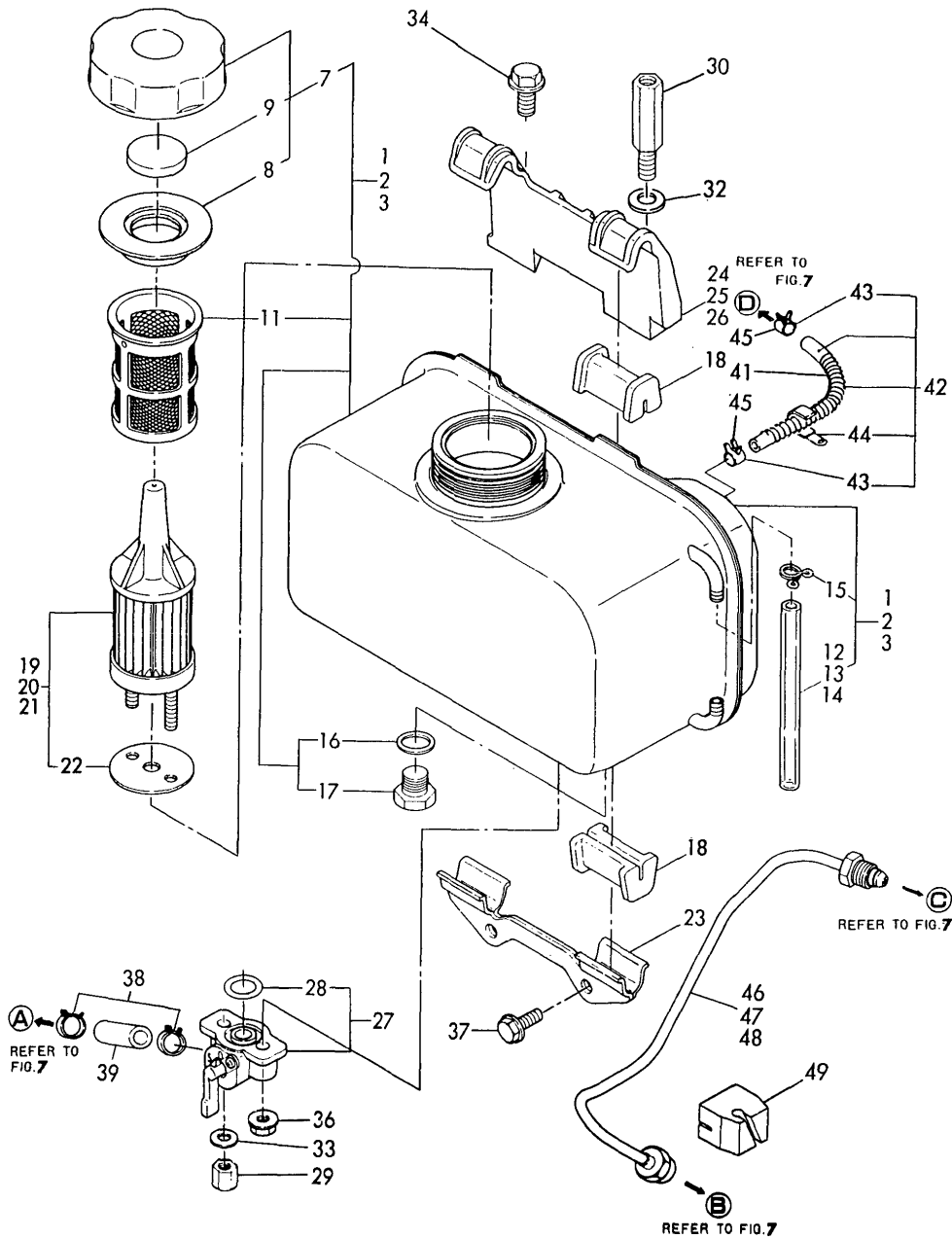
(A)=L40AE-DGMO
(B)=L40AE-DEGMO
(C)=L60AE-DGMO

(D)=L60AE-DEGMO
(E)=L90AE-DGMO
(F)=L90AE-DEGMO

| No. | Lev. | Parts No. | Description | Q'ty | | | | | | I | R |
|-----|------|--------------|----------------------|------|-----|-----|-----|-----|-----|---|---|
| | | | | (A) | (B) | (C) | (D) | (E) | (F) | | |
| 1 | 1 | 714250-51710 | PUMP ASSY, INJECTION | 1 | 1 | | | | | | |
| 2 | 1 | 714350-51710 | PUMP ASSY, INJECTION | | | | 1 | 1 | | | |
| 3 | 1 | 714650-51700 | PUMP ASSY, INJECTION | | | | | | 1 | 1 | |
| 4 | 2 | 105546-51020 | GASKET | 1 | 1 | 1 | 1 | 1 | 1 | 1 | |
| 5 | 2 | 114250-51080 | PLATE | 1 | 1 | 1 | 1 | 1 | 1 | 1 | |
| 6 | 2 | 114250-51200 | BODY ASSY, PUMP | 1 | 1 | | | | | | |
| 7 | 2 | 114350-51200 | BODY ASSY, PUMP | | | | 1 | 1 | | | |
| 8 | 2 | 114650-51100 | BODY ASSY, PUMP | | | | | | | 1 | 1 |
| 9 | 3 | 114250-51180 | JOINT, PIPE | 1 | 1 | 1 | 1 | 1 | 1 | 1 | |
| 10 | 3 | 114250-51190 | O-RING, S27 | 1 | 1 | 1 | 1 | 1 | 1 | 1 | |
| 11 | 2 | 114250-51150 | RING, SNAP | 1 | 1 | 1 | 1 | 1 | 1 | 1 | |
| 12 | 2 | 114250-51160 | SPRING, PLUNGER | 1 | 1 | 1 | 1 | 1 | 1 | 1 | |
| 13 | 2 | 114250-51300 | VALVE ASSY, DELIVERY | 1 | 1 | 1 | 1 | | | | |
| 14 | 2 | 114650-51300 | VALVE ASSY, DELIVERY | | | | | | | 1 | 1 |
| 15 | 2 | 105546-51330 | SPRING, DELIVERY | 1 | 1 | 1 | 1 | 1 | 1 | 1 | |
| 16 | 2 | 114250-51340 | HOLDER, DELIVERY | 1 | 1 | 1 | 1 | 1 | 1 | 1 | |
| 17 | 2 | 124550-51350 | GASKET, DELIVERY | 2 | 2 | 2 | 2 | 2 | 2 | 2 | |
| 18 | 2 | 114250-51600 | LEVER ASSY, CONTROL | 1 | 1 | 1 | 1 | 1 | 1 | 1 | |
| 19 | 2 | 114250-51640 | SEAT, SPRING A | 1 | 1 | 1 | 1 | 1 | 1 | 1 | |
| 20 | 2 | 114250-51650 | SEAT, SPRING B | 1 | 1 | 1 | 1 | 1 | 1 | 1 | |
| 21 | 1 | 22351-020006 | PIN, SPRING 2.0X 6 | 2 | 2 | 2 | 2 | 2 | 2 | 2 | |
| 22 | 1 | 22351-030008 | PIN, SPRING 3.0X 8 | 1 | 1 | 1 | 1 | 1 | 1 | 1 | |
| 23 | 1 | 714250-53101 | VALVE ASSY,INJECTION | 1 | 1 | | | | | | |
| 24 | 1 | 714870-53100 | VALVE ASSY,INJECTION | | | | 1 | 1 | | | |
| 25 | 1 | 714650-53100 | VALVE ASSY,INJECTION | | | | | | | 1 | 1 |
| 26 | 2 | 114250-53001 | VALVE ASSY,INJECTION | 1 | 1 | | | | | | |
| 27 | 2 | 114870-53000 | VALVE ASSY,INJECTION | | | | 1 | 1 | | | |
| 28 | 2 | 114650-53000 | VALVE ASSY,INJECTION | | | | | | | 1 | 1 |
| 29 | 2 | 114250-53080 | NUT, NOZZLE D16.95 | 1 | 1 | 1 | 1 | 1 | 1 | 1 | |
| 30 | 2 | 114250-53120 | SPRING, NOZZLE | 1 | 1 | 1 | 1 | 1 | 1 | 1 | |
| 31 | 2 | 114250-53130 | SEAT, SPRING | 1 | 1 | 1 | 1 | 1 | 1 | 1 | |
| 32 | 2 | 114250-53140 | PLATE | 1 | 1 | 1 | 1 | 1 | 1 | 1 | |
| 33 | 2 | 114250-53210 | PIN | 2 | 2 | 2 | 2 | 2 | 2 | 2 | |
| 34 | 2 | 114250-53300 | HOLDER ASSY, NOZZLE | 1 | 1 | 1 | 1 | | | | |
| 35 | 2 | 114650-53300 | HOLDER ASSY, NOZZLE | | | | | | | 1 | 1 |
| 39 | 3 | 114250-53331 | PIN | 1 | 1 | 1 | 1 | 1 | 1 | 1 | |
| 40 | 2 | 114250-53400 | SHIM SET | 1 | 1 | 1 | 1 | 1 | 1 | 1 | |

Fig.8. FUEL TANK & FUEL LINE

Fig.8 FUEL TANK & PIPE



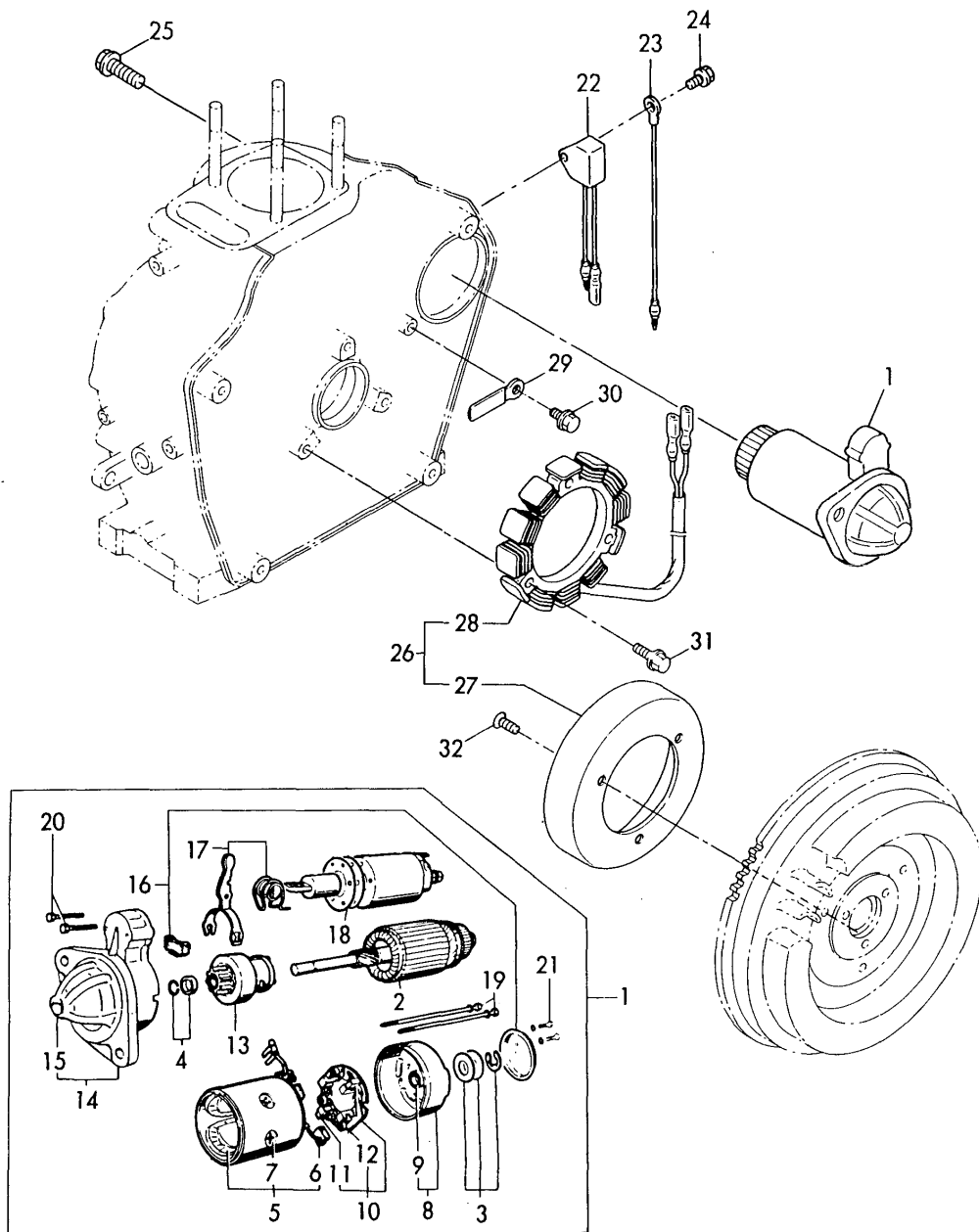
(A)=L40AE-DGMO
(B)=L40AE-DEGMO
(C)=L60AE-DGMO

(D)=L60AE-DEGMO
(E)=L90AE-DGMO
(F)=L90AE-DEGMO

| No. | Lev. | Parts No. | Description | Q'ty | | | | | | I | R |
|-----|------|--------------|----------------------|------|-----|-----|-----|-----|-----|---|---|
| | | | | (A) | (B) | (C) | (D) | (E) | (F) | | |
| 1 | 1 | 714268-55721 | TANK ASSY, FUEL | 1 | 1 | | | | | | |
| 2 | 1 | 714368-55721 | TANK ASSY, FUEL | | | 1 | 1 | | | | |
| 3 | 1 | 714668-55721 | TANK ASSY, FUEL | | | | | 1 | 1 | | |
| 7 | 2 | 114250-55041 | CAP ASSY | 1 | 1 | 1 | 1 | 1 | 1 | 1 | |
| 8 | 3 | 114250-55050 | GASKET | 1 | 1 | 1 | 1 | 1 | 1 | 1 | |
| 9 | 3 | 114250-55060 | SEAL | 1 | 1 | 1 | 1 | 1 | 1 | 1 | |
| 11 | 2 | 114250-55100 | FILTER, FUEL | 1 | 1 | 1 | 1 | 1 | 1 | 1 | |
| 12 | 2 | 114250-55150 | GAUGE, LEVEL | 1 | 1 | | | | | | |
| 13 | 2 | 114350-55150 | GAUGE, LEVEL | | | 1 | 1 | | | | |
| 14 | 2 | 114650-55150 | GAUGE, LEVEL | | | | | | 1 | 1 | |
| 15 | 2 | 124722-59050 | CLIP, HOSE 9 | 2 | 2 | 2 | 2 | 2 | 2 | 2 | |
| 16 | 2 | 23414-120000 | GASKET, 12X1.0 | 1 | 1 | 1 | 1 | 1 | 1 | 1 | |
| 17 | 2 | 23887-120002 | PLUG, 12 | 1 | 1 | 1 | 1 | 1 | 1 | 1 | |
| 18 | 2 | 114250-55201 | DAMPER, FUEL TANK | 4 | 4 | 4 | 4 | 4 | 4 | 4 | |
| 19 | 1 | 114250-55120 | FILTER ASSY, FUEL | 1 | 1 | | | | | | |
| 20 | 1 | 114350-55120 | FILTER ASSY, FUEL | | | 1 | 1 | | | | |
| 21 | 1 | 114650-55120 | FILTER ASSY, FUEL | | | | | | 1 | 1 | |
| 22 | 1 | 114250-55130 | GASKET | 1 | 1 | 1 | 1 | | | | |
| 23 | 1 | 114250-55211 | STAY, FUEL TANK | 1 | 1 | 1 | 1 | 1 | 1 | 1 | |
| 24 | 1 | 114250-55231 | STAY, FUEL TANK | 1 | 1 | | | | | | |
| 25 | 1 | 114350-55231 | STAY, FUEL TANK | | | 1 | 1 | | | | |
| 26 | 1 | 114650-55230 | STAY, FUEL TANK | | | | | | 1 | 1 | |
| 27 | 1 | 114250-55300 | COCK ASSY, FUEL | 1 | 1 | 1 | 1 | 1 | 1 | 1 | |
| 28 | 2 | 24341-000150 | O-RING, 1AS15.0 | 1 | 1 | 1 | 1 | 1 | 1 | 1 | |
| 29 | 1 | 114252-55800 | NUT | 1 | 1 | 1 | 1 | 1 | 1 | 1 | |
| 30 | 1 | 114650-55810 | BOLT | 1 | 1 | 1 | 1 | 1 | 1 | 1 | |
| 32 | 1 | 22117-080000 | WASHER, 8 | 1 | 1 | 1 | 1 | 1 | 1 | 1 | |
| 33 | 1 | 22117-060000 | WASHER, 6 | 1 | 1 | 1 | 1 | 1 | 1 | 1 | |
| 34 | 1 | 26106-080452 | BOLT, M8X 45 PLATED | 1 | 1 | 1 | 1 | 1 | 1 | 1 | |
| 36 | 1 | 26366-060002 | NUT, M6 | 1 | 1 | 1 | 1 | 1 | 1 | 1 | |
| 37 | 1 | 26476-060142 | SCREW, TAPPING M6X14 | 2 | 2 | 2 | 2 | 2 | 2 | 2 | |
| 38 | 1 | 106990-44660 | CLIP, HOSE 12.5 | 2 | 2 | 2 | 2 | 2 | 2 | 2 | |
| 39 | 1 | 114250-59050 | PIPE, FUEL L=46 | 1 | 1 | | | | 1 | 1 | |
| 40 | 1 | 114360-59060 | PIPE, FUEL L=55 | | | 1 | 1 | | | | |
| 41 | 1 | 114250-59060 | PIPE, FUEL RETURN | 1 | 1 | 1 | 1 | | | | |
| 42 | 1 | 114652-59300 | PIPE, FUEL RETURN | | | | | | | 1 | 1 |
| 43 | 2 | 124722-59050 | CLIP, HOSE 9 | | | | | | | 2 | 2 |
| 44 | 2 | 121750-59890 | BAND, 140 | | | | | | | 1 | 1 |
| 45 | 1 | 124722-59050 | CLIP, HOSE 9 | 2 | 2 | 2 | 2 | | | | |
| 46 | 1 | 114250-59800 | PIPE ASSY, INJECTION | 1 | 1 | | | | | | |
| 47 | 1 | 114350-59800 | PIPE ASSY, INJECTION | | | 1 | 1 | | | | |
| 48 | 1 | 114650-59800 | PIPE ASSY, INJECTION | | | | | | | 1 | 1 |
| 49 | 1 | 114650-59850 | SUPPORT | | | | | | | 1 | 1 |

Fig.9. STARTING MOTOR & DYNAMO

Fig. 9 ELECTRIC STARTING DEVICE



(A)=L40AE-DGMO
(B)=L40AE-DEGMO
(C)=L60AE-DGMO

(D)=L60AE-DEGMO
(E)=L90AE-DGMO
(F)=L90AE-DEGMO

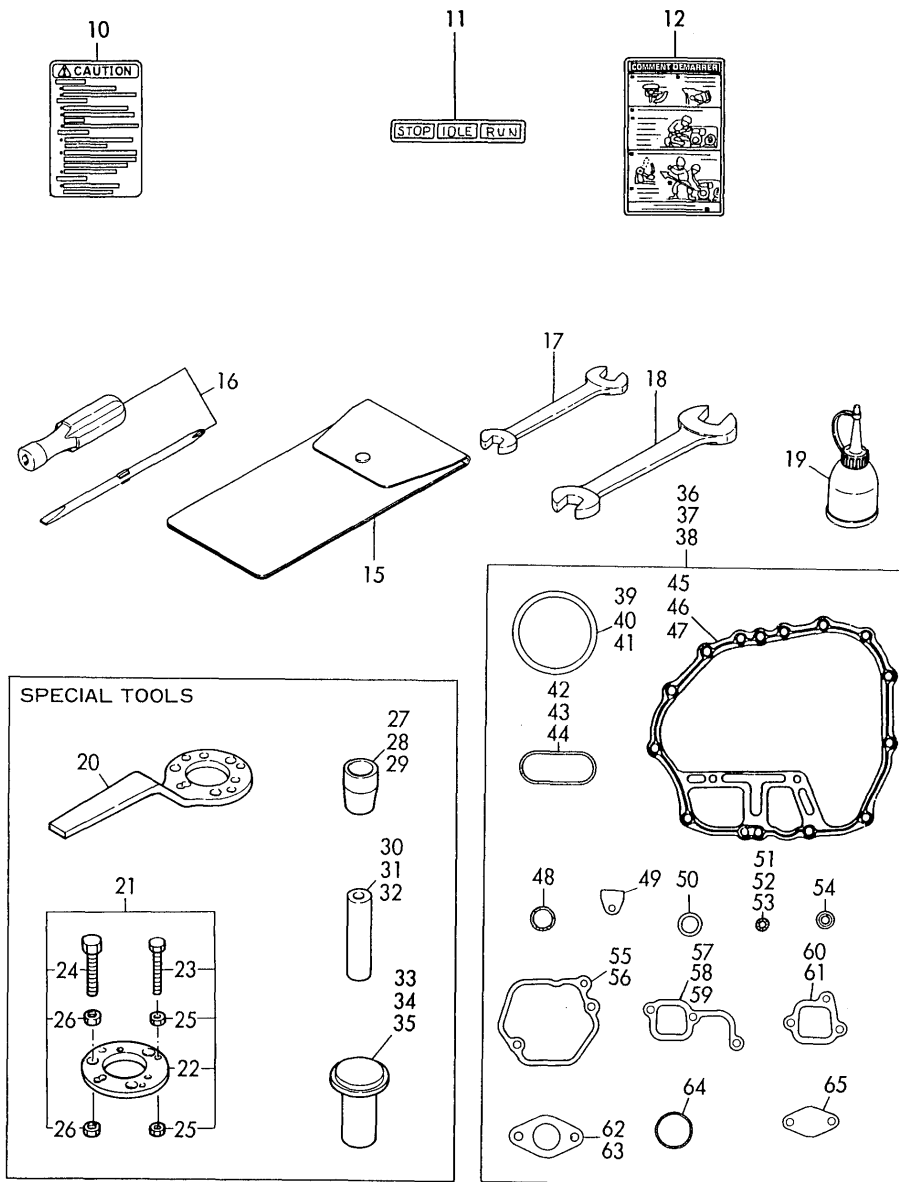
| No. | Lev. | Parts No. | Description | Q'ty | | | | | | I | R |
|-----|------|--------------|----------------------|------|-----|-----|-----|-----|-----|---|---|
| | | | | (A) | (B) | (C) | (D) | (E) | (F) | | |
| 1 | 1 | 114362-77010 | STARTER, S114-414A | 1 | 1 | 1 | 1 | 1 | 1 | | |
| 2 | 2 | X211461104 | ARMATURE | 1 | 1 | 1 | 1 | 1 | 1 | | |
| 3 | 2 | X21148110 | WASHER SET, THRUST | 1 | 1 | 1 | 1 | 1 | 1 | | |
| 4 | 2 | X21147155 | STOPPER SET, PINION | 1 | 1 | 1 | 1 | 1 | 1 | | |
| 5 | 2 | X211412105 | COIL ASSY, FIELD | 1 | 1 | 1 | 1 | 1 | 1 | | |
| 6 | 3 | X21145312 | BRUSH, + | 2 | 2 | 2 | 2 | 2 | 2 | | |
| 7 | 3 | X21143215 | SCREW, CORE | 4 | 4 | 4 | 4 | 4 | 4 | | |
| 8 | 2 | X211473002 | COVER, REAR | 1 | 1 | 1 | 1 | 1 | 1 | | |
| 9 | 3 | X21145352 | METAL | 1 | 1 | 1 | 1 | 1 | 1 | | |
| 10 | 2 | X211489001 | HOLDER ASSY, BRUSH | 1 | 1 | 1 | 1 | 1 | 1 | | |
| 11 | 3 | X21148313 | BRUSH (-) | 1 | 1 | 1 | 1 | 1 | 1 | | |
| 12 | 3 | X21149314 | SPRING, BRUSH | 3 | 3 | 3 | 3 | 3 | 3 | | |
| 13 | 2 | X211445508 | PINION ASSY | 1 | 1 | 1 | 1 | 1 | 1 | | |
| 14 | 2 | X211416603 | HOUSING ASSY, GEAR | 1 | 1 | 1 | 1 | 1 | 1 | | |
| 15 | 3 | X21145352 | METAL | 1 | 1 | 1 | 1 | 1 | 1 | | |
| 16 | 2 | X211478006 | COVER KIT | 1 | 1 | 1 | 1 | 1 | 1 | | |
| 17 | 2 | X211456013 | LEVER KIT, SHIFT | 1 | 1 | 1 | 1 | 1 | 1 | | |
| 18 | 2 | X211427501 | SWITCH, MAGNETIC | 1 | 1 | 1 | 1 | 1 | 1 | | |
| 19 | 2 | X211468005 | BOLT, THROUGH | 2 | 2 | 2 | 2 | 2 | 2 | | |
| 20 | 2 | X21145867 | BOLT, M6 | 2 | 2 | 2 | 2 | 2 | 2 | | |
| 21 | 2 | X21142835 | SCREW SET | 1 | 1 | 1 | 1 | 1 | 1 | | |
| 22 | 1 | 160970-77350 | RECTIFIER, ZR2117 | 1 | 1 | 1 | 1 | 1 | 1 | | |
| 23 | 1 | 183350-77400 | WIRE, LEAD | 1 | 1 | 1 | 1 | 1 | 1 | | |
| 24 | 1 | 26106-060122 | BOLT, M6X 12 PLATED | 1 | 1 | 1 | 1 | 1 | 1 | | |
| 25 | 1 | 26106-100302 | BOLT, M10X 30 PLATED | 2 | 2 | 2 | 2 | 2 | 2 | | |
| 26 | 1 | 114351-78250 | DYNAMO ASSY | 1 | 1 | 1 | 1 | 1 | 1 | | |
| 27 | 2 | 114351-78760 | WHEEL, DYNAMO | 1 | 1 | 1 | 1 | 1 | 1 | | |
| 28 | 2 | 114351-78750 | STATOR ASSY | 1 | 1 | 1 | 1 | 1 | 1 | | |
| 29 | 1 | 160710-78710 | CLAMP, CORD | 1 | 1 | 1 | 1 | 1 | 1 | | |
| 30 | 1 | 26476-060142 | SCREW, TAPPING M6X14 | 1 | 1 | 1 | 1 | 1 | 1 | | |
| 31 | 1 | 26476-060202 | SCREW, TAPPING M6X20 | 3 | 3 | 3 | 3 | 3 | 3 | | |
| 32 | 1 | 26577-060142 | SCREW M 6X 14 | 3 | 3 | 3 | 3 | 3 | 3 | | |

Fig.10. LABEL, TOOL & GASKET SET

(A)=L40AE-DGMO
(B)=L40AE-DEGMO
(C)=L60AE-DGMO

(D)=L60AE-DEGMO
(E)=L90AE-DGMO
(F)=L90AE-DEGMO

Fig. 10 LABELS, TOOLS & GASKET SET

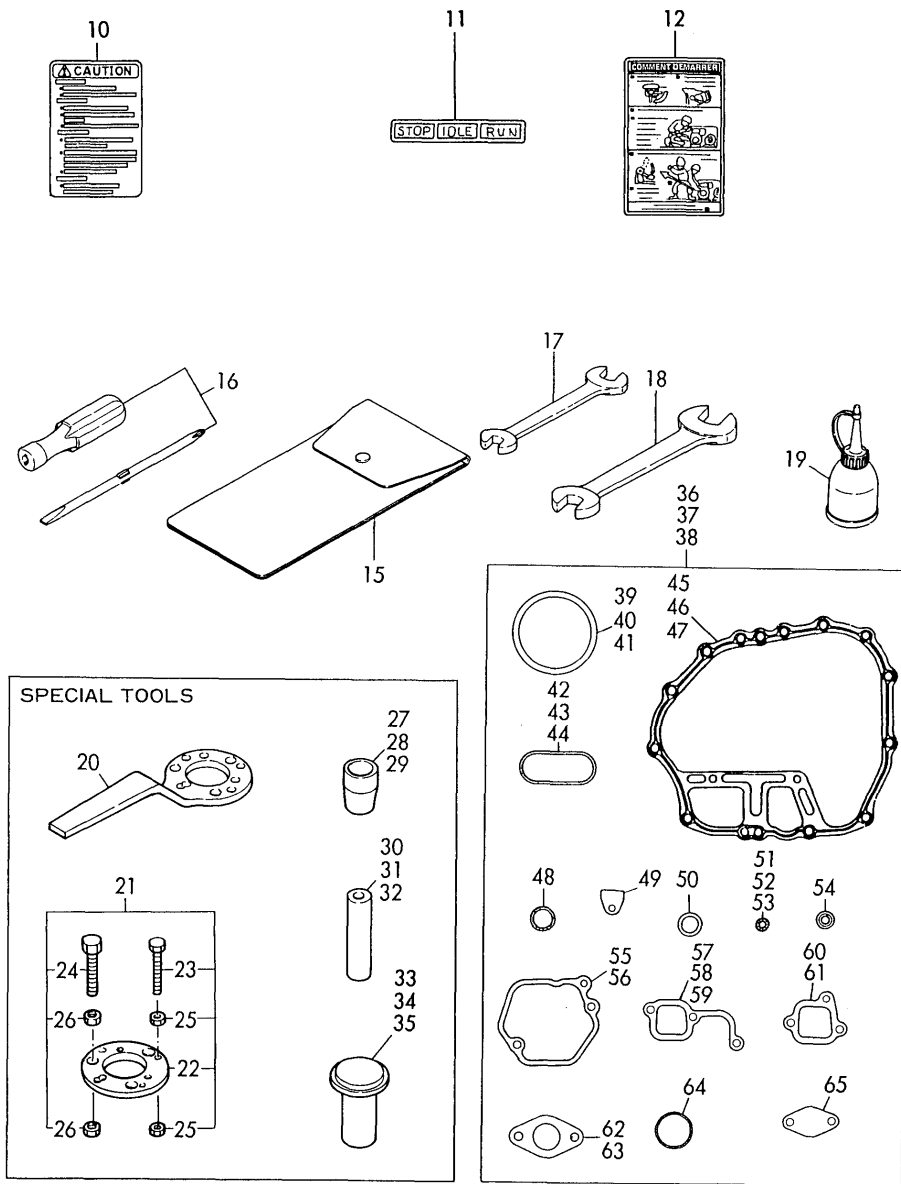


| No. | Lev. | Parts No. | Description | Q'ty | | | | | | I | R |
|-----|------|--------------|-----------------------|------|-----|-----|-----|-----|-----|---|---|
| | | | | (A) | (B) | (C) | (D) | (E) | (F) | | |
| 10 | 1 | 114268-07280 | LABEL, PRECAUTION | 1 | 1 | 1 | 1 | 1 | 1 | | |
| 11 | 1 | 183250-07230 | LABEL, OPERATION | 1 | 1 | 1 | 1 | 1 | 1 | | |
| 12 | 1 | 114268-07360 | LABEL, HOW TO START(F | 1 | 1 | 1 | 1 | 1 | 1 | | |
| 15 | 1 | 114250-92600 | BAG, TOOL | 1 | 1 | 1 | 1 | 1 | 1 | | |
| 16 | 1 | 160330-92730 | DRIVE, SCREW | 1 | 1 | 1 | 1 | 1 | 1 | | |
| 17 | 1 | 28110-100120 | SPANNER, 10X12 | 1 | 1 | 1 | 1 | 1 | 1 | | |
| 18 | 1 | 28110-140170 | SPANNER, 14X17 | 1 | 1 | 1 | 1 | 1 | 1 | | |
| 19 | 1 | 28210-000150 | OILER | 1 | 1 | 1 | 1 | 1 | 1 | | |
| 20 | 1 | 114250-92101 | F.W. LOCKING HANDLE | 1 | 1 | 1 | 1 | 1 | 1 | | 1 |
| 21 | 1 | 114250-92130 | REMOVER, FLYWHEEL | 1 | 1 | 1 | 1 | 1 | 1 | | 1 |
| 22 | 2 | 114250-92121 | TOOL, WHEEL REMOVER | 1 | 1 | 1 | 1 | 1 | 1 | | 1 |
| 23 | 2 | 26116-060454 | BOLT M 6X 45 PLATED | 4 | 4 | 4 | 4 | 4 | 4 | | 1 |
| 24 | 2 | 26116-080454 | BOLT, M8X 45 PLATED | 3 | 3 | 3 | 3 | 3 | 3 | | 1 |
| 25 | 2 | 26716-060002 | NUT, M6 | 8 | 8 | 8 | 8 | 8 | 8 | | 1 |
| 26 | 2 | 26716-080002 | NUT, M8 | 6 | 6 | 6 | 6 | 6 | 6 | | 1 |
| 27 | 1 | 114268-92300 | GUIDE, OIL SEAL | 1 | 1 | | | | | | 1 |
| 28 | 1 | 114368-92300 | GUIDE, OIL SEAL | | | 1 | 1 | | | | 1 |
| 29 | 1 | 114668-92300 | GUIDE, OIL SEAL | | | | | 1 | 1 | | 1 |
| 30 | 1 | 114250-92311 | INSTALLING TOOL | 1 | 1 | | | | | | 1 |
| 31 | 1 | 114350-92311 | INSTALLING TOOL | | | 1 | 1 | | | | 1 |
| 32 | 1 | 114650-92310 | INSTALLING TOOL | | | | | 1 | 1 | | 1 |
| 33 | 1 | 114250-92350 | INSTALLING TOOL | 1 | 1 | | | | | | 1 |
| 34 | 1 | 114350-92350 | INSTALLING TOOL | | | 1 | 1 | | | | 1 |
| 35 | 1 | 114650-92350 | INSTALLING TOOL | | | | | 1 | 1 | | 1 |
| 36 | 1 | 714250-92602 | GASKET SET | 1 | 1 | | | | | | 1 |
| 37 | 1 | 714350-92602 | GASKET SET | | | 1 | 1 | | | | 1 |
| 38 | 1 | 714650-92602 | GASKET SET | | | | | 1 | 1 | | 1 |
| 39 | 2 | 114250-01340 | GASKET, HEAD | 1 | 1 | | | | | | 1 |
| 40 | 2 | 114350-01340 | GASKET, HEAD | | | 1 | 1 | | | | 1 |
| 41 | 2 | 114650-01340 | GASKET, HEAD | | | | | | 1 | 1 | 1 |
| 42 | 2 | 114250-01380 | O-RING | 1 | 1 | | | | | | 1 |
| 43 | 2 | 114350-01380 | O-RING | | | 1 | 1 | | | | 1 |
| 44 | 2 | 114650-01380 | O-RING | | | | | | 1 | 1 | 1 |
| 45 | 2 | 114250-01412 | GASKET, CRANK CASE | 1 | 1 | | | | | | 1 |
| 46 | 2 | 114350-01412 | GASKET, CRANK CASE | | | 1 | 1 | | | | 1 |
| 47 | 2 | 114650-01412 | GASKET, CRANK CASE | | | | | | 1 | 1 | 1 |
| 48 | 2 | 24311-000180 | O-RING, 1AP18.0 | 2 | 2 | 2 | 2 | 2 | 2 | | 2 |
| 49 | 2 | 114250-01840 | GASKET | 1 | 1 | 1 | 1 | 1 | 1 | | 1 |
| 50 | 2 | 43400-500490 | SEAL WASHER 16S | 2 | 2 | 2 | 2 | 2 | 2 | | 2 |
| 51 | 2 | 114250-11340 | SEAL, VALVE STEM | 2 | 2 | | | | | | 2 |
| 52 | 2 | 114350-11340 | SEAL, VALVE STEM | | | 2 | 2 | | | | 2 |
| 53 | 2 | 114650-11340 | SEAL, VALVE STEM | | | | | | | 2 | 2 |
| 54 | 2 | 114250-11460 | GASKET, NOZZLE | 1 | 1 | 1 | 1 | 1 | 1 | | 1 |
| 55 | 2 | 114250-11310 | GASKET, BONNET | 1 | 1 | 1 | 1 | | | | 1 |
| 56 | 2 | 114650-11310 | GASKET, BONNET | | | | | | 1 | 1 | 1 |
| 57 | 2 | 114250-12200 | GASKET | 1 | 1 | | | | | | 1 |
| 58 | 2 | 114350-12201 | GASKET | | | 1 | 1 | | | | 1 |
| 59 | 2 | 114650-12300 | GASKET | | | | | | | 1 | 1 |
| 60 | 2 | 114250-12210 | GASKET, AIR CLEANER | 1 | 1 | 1 | 1 | | | | 1 |
| 61 | 2 | 114650-12210 | GASKET, AIR CLEANER | | | | | | 1 | 1 | 1 |
| 62 | 2 | 114250-13200 | GASKET, MUFFLER | 1 | 1 | 1 | 1 | | | | 1 |

Remarks
(1) OPTIONAL PARTS.

Fig.10. LABEL, TOOL & GASKET SET

Fig. 10 LABELS, TOOLS & GASKET SET



(A)=L40AE-DGMO
(B)=L40AE-DEGMO
(C)=L60AE-DGMO

(D)=L60AE-DEGMO
(E)=L90AE-DGMO
(F)=L90AE-DEGMO

| No. | Lev. | Parts No. | Description | Q'ty | | | | | | I | R | |
|-----|------|--------------|-----------------|------|-----|-----|-----|-----|-----|---|---|--|
| | | | | (A) | (B) | (C) | (D) | (E) | (F) | | | |
| 63 | 2 | 114650-13200 | GASKET, MUFFLER | | | | | | 1 | 1 | | |
| 64 | 2 | 103338-32570 | O-RING | 1 | 1 | 1 | 1 | 1 | 1 | 1 | | |
| 65 | 2 | 114250-35270 | GASKET | 1 | 1 | 1 | 1 | 1 | 1 | 1 | | |

Remarks
(1) OPTIONAL PARTS.

Parts No. Index

| Parts No. | Fig. No. | Ref. No. |
|--------------|----------|----------|
| 101158-11180 | 3 | 14 |
| 103338-32570 | 5 | 4 |
| | 10 | 64 |
| 103854-01221 | 2 | 11 |
| 104200-23201 | 2 | 58 |
| 104200-66820 | 6 | 29 |
| 104200-66830 | 6 | 30 |
| 104200-66850 | 6 | 31 |
| 104211-11370 | 3 | 35 |
| | | 64 |
| 105010-11490 | 3 | 34 |
| | | 63 |
| 105025-01220 | 1 | 13 |
| 105225-01240 | 1 | 18 |
| 105425-01690 | 1 | 32 |
| 105546-51020 | 7 | 4 |
| 105546-51330 | 7 | 15 |
| 106990-44660 | 8 | 38 |
| 114250-01200 | 1 | 5 |
| 114250-01210 | 1 | 8 |
| 114250-01220 | 1 | 11 |
| 114250-01250 | 1 | 14 |
| 114250-01340 | 1 | 20 |
| | 10 | 39 |
| 114250-01380 | 1 | 23 |
| | 10 | 42 |
| 114250-01412 | 1 | 26 |
| | 10 | 45 |
| 114250-01800 | 1 | 36 |
| 114250-01830 | 1 | 41 |
| 114250-01840 | 1 | 42 |
| | 10 | 49 |
| 114250-02030 | 1 | 50 |
| 114250-02100 | 1 | 51 |
| 114250-02113 | 1 | 54 |
| 114250-02200 | 1 | 67 |
| 114250-02210 | 1 | 70 |
| 114250-03591 | 3 | 53 |
| 114250-03640 | 3 | 54 |
| 114250-11020 | 3 | 1 |
| 114250-11101 | 3 | 4 |
| 114250-11113 | 3 | 7 |
| 114250-11120 | 3 | 10 |
| 114250-11180 | 3 | 13 |
| 114250-11240 | 3 | 36 |
| 114250-11290 | 3 | 19 |
| 114250-11310 | 3 | 48 |
| | 10 | 55 |
| 114250-11340 | 3 | 21 |
| | 10 | 51 |

| Parts No. | Fig. No. | Ref. No. |
|--------------|----------|----------|
| 114250-11460 | 3 | 24 |
| | 10 | 54 |
| 114250-11600 | 3 | 26 |
| 114250-11651 | 3 | 28 |
| 114250-11900 | 3 | 38 |
| 114250-11951 | 3 | 50 |
| 114250-12010 | 4 | 1 |
| 114250-12200 | 4 | 4 |
| | 10 | 57 |
| 114250-12210 | 4 | 7 |
| | 10 | 60 |
| 114250-12520 | 4 | 13 |
| 114250-12530 | 4 | 15 |
| 114250-12550 | 4 | 21 |
| 114250-12560 | 4 | 17 |
| 114250-12580 | 4 | 19 |
| 114250-13200 | 4 | 26 |
| | 10 | 62 |
| 114250-14200 | 2 | 5 |
| 114250-14260 | 2 | 7 |
| 114250-14450 | 2 | 8 |
| 114250-21550 | 2 | 22 |
| 114250-22302 | 2 | 39 |
| 114250-23200 | 2 | 57 |
| 114250-23220 | 2 | 59 |
| 114250-23250 | 2 | 60 |
| 114250-32010 | 5 | 1 |
| 114250-32070 | 5 | 3 |
| 114250-35070 | 5 | 7 |
| 114250-35150 | 1 | 66 |
| 114250-35270 | 10 | 65 |
| 114250-45211 | 6 | 5 |
| 114250-45300 | 6 | 8 |
| | 11 | 5 |
| 114250-45310 | 6 | 9 |
| | 11 | 6 |
| 114250-45330 | 6 | 11 |
| | 11 | 8 |
| 114250-51080 | 7 | 5 |
| 114250-51150 | 7 | 11 |
| 114250-51160 | 7 | 12 |
| 114250-51180 | 7 | 9 |
| 114250-51190 | 7 | 10 |
| 114250-51200 | 7 | 6 |
| 114250-51300 | 7 | 13 |
| 114250-51340 | 7 | 16 |
| 114250-51600 | 7 | 18 |
| 114250-51640 | 7 | 19 |
| 114250-51650 | 7 | 20 |
| 114250-53001 | 7 | 26 |

| Parts No. | Fig. No. | Ref. No. |
|--------------|----------|----------|
| 114250-53080 | 7 | 29 |
| 114250-53120 | 7 | 30 |
| 114250-53130 | 7 | 31 |
| 114250-53140 | 7 | 32 |
| 114250-53210 | 7 | 33 |
| 114250-53300 | 7 | 34 |
| 114250-53331 | 7 | 39 |
| 114250-53400 | 7 | 40 |
| 114250-55041 | 8 | 7 |
| 114250-55050 | 8 | 8 |
| 114250-55060 | 8 | 9 |
| 114250-55100 | 8 | 11 |
| 114250-55120 | 8 | 19 |
| 114250-55130 | 8 | 22 |
| 114250-55150 | 8 | 12 |
| 114250-55201 | 8 | 18 |
| 114250-55211 | 8 | 23 |
| 114250-55231 | 8 | 24 |
| 114250-55300 | 8 | 27 |
| 114250-59050 | 8 | 39 |
| 114250-59060 | 8 | 41 |
| 114250-59800 | 8 | 46 |
| 114250-61900 | 5 | 27 |
| 114250-66200 | 6 | 23 |
| 114250-66440 | 6 | 28 |
| 114250-66550 | 6 | 34 |
| 114250-76590 | 6 | 69 |
| 114250-76600 | 6 | 77 |
| | 11 | 55 |
| 114250-76610 | 6 | 79 |
| | 11 | 56 |
| 114250-92101 | 10 | 20 |
| 114250-92121 | 10 | 22 |
| 114250-92130 | 10 | 21 |
| 114250-92311 | 10 | 30 |
| 114250-92350 | 10 | 33 |
| 114250-92600 | 10 | 15 |
| 114252-12550 | 4 | 22 |
| 114252-12560 | 4 | 18 |
| 114252-55800 | 8 | 29 |
| 114260-01453 | 1 | 29 |
| 114260-76050 | 6 | 41 |
| 114260-76250 | 6 | 43 |
| 114260-76520 | 6 | 45 |
| 114268-07280 | 10 | 10 |
| 114268-07360 | 10 | 12 |
| 114268-92300 | 10 | 27 |
| 114350-01200 | 1 | 6 |
| 114350-01210 | 1 | 9 |
| 114350-01220 | 1 | 12 |

| Parts No. | Fig. No. | Ref. No. |
|--------------|----------|----------|
| 114350-01250 | 1 | 15 |
| 114350-01340 | 1 | 21 |
| | 10 | 40 |
| 114350-01380 | 1 | 24 |
| | 10 | 43 |
| 114350-01412 | 1 | 27 |
| | 10 | 46 |
| 114350-02100 | 1 | 52 |
| 114350-02113 | 1 | 55 |
| 114350-02200 | 1 | 68 |
| 114350-02210 | 1 | 71 |
| 114350-11021 | 3 | 2 |
| 114350-11101 | 3 | 5 |
| 114350-11113 | 3 | 8 |
| 114350-11120 | 3 | 11 |
| 114350-11340 | 3 | 22 |
| | 10 | 52 |
| 114350-11470 | 3 | 25 |
| 114350-12011 | 4 | 2 |
| 114350-12201 | 4 | 5 |
| | 10 | 58 |
| 114350-14450 | 2 | 9 |
| 114350-22301 | 2 | 40 |
| 114350-45320 | 6 | 10 |
| | 11 | 7 |
| 114350-45340 | 6 | 13 |
| | 11 | 10 |
| 114350-51200 | 7 | 7 |
| 114350-55120 | 8 | 20 |
| 114350-55150 | 8 | 13 |
| 114350-55231 | 8 | 25 |
| 114350-59800 | 8 | 47 |
| 114350-76590 | 6 | 70 |
| 114350-76591 | 11 | 53 |
| 114350-92311 | 10 | 31 |
| 114350-92350 | 10 | 34 |
| 114351-78250 | 9 | 26 |
| 114351-78750 | 9 | 28 |
| 114351-78760 | 9 | 27 |
| 114360-45101 | 6 | 2 |
| | 11 | 1 |
| 114360-59060 | 8 | 40 |
| 114362-77010 | 9 | 1 |
| 114368-01452 | 1 | 30 |
| 114368-92300 | 10 | 28 |
| 114650-01230 | 1 | 7 |
| 114650-01240 | 1 | 10 |
| 114650-01250 | 1 | 16 |
| 114650-01260 | 1 | 19 |
| 114650-01340 | 1 | 22 |

Parts No. Index

| Parts No. | Fig. No. | Ref. No. |
|--------------|----------|----------|
| 114650-01340 | 10 | 41 |
| 114650-01380 | 1 | 25 |
| | 10 | 44 |
| 114650-01412 | 1 | 28 |
| | 10 | 47 |
| 114650-02100 | 1 | 53 |
| 114650-02150 | 1 | 56 |
| 114650-02200 | 1 | 69 |
| 114650-02210 | 1 | 72 |
| 114650-11010 | 3 | 3 |
| 114650-11100 | 3 | 6 |
| 114650-11121 | 3 | 12 |
| 114650-11261 | 3 | 20 |
| 114650-11310 | 3 | 49 |
| | 10 | 56 |
| 114650-11340 | 3 | 23 |
| | 10 | 53 |
| 114650-11600 | 3 | 27 |
| 114650-11652 | 3 | 29 |
| 114650-11951 | 3 | 51 |
| 114650-12020 | 4 | 3 |
| 114650-12210 | 4 | 8 |
| | 10 | 61 |
| 114650-12300 | 4 | 6 |
| | 10 | 59 |
| 114650-12520 | 4 | 14 |
| 114650-12530 | 4 | 16 |
| 114650-12540 | 4 | 20 A |
| 114650-12550 | 4 | 20 B |
| 114650-12590 | 4 | 20 |
| 114650-13200 | 4 | 27 |
| | 10 | 63 |
| 114650-14200 | 2 | 6 |
| 114650-14401 | 2 | 10 |
| 114650-21551 | 2 | 23 |
| 114650-22300 | 2 | 41 |
| 114650-32010 | 5 | 2 |
| 114650-45200 | 6 | 7 |
| | 11 | 4 |
| 114650-45330 | 6 | 12 |
| | 11 | 9 |
| 114650-51100 | 7 | 8 |
| 114650-51300 | 7 | 14 |
| 114650-53000 | 7 | 28 |
| 114650-53300 | 7 | 35 |
| 114650-55120 | 8 | 21 |
| 114650-55150 | 8 | 14 |
| 114650-55230 | 8 | 26 |
| 114650-55810 | 8 | 30 |
| 114650-59800 | 8 | 48 |

| Parts No. | Fig. No. | Ref. No. |
|--------------|----------|----------|
| 114650-59850 | 8 | 49 |
| 114650-66600 | 6 | 35 |
| 114650-76520 | 6 | 48 A |
| 114650-76540 | 6 | 52 A |
| 114650-76630 | 6 | 66 A |
| 114650-76631 | 11 | 50 |
| 114650-92310 | 10 | 32 |
| 114650-92350 | 10 | 35 |
| 114652-59300 | 8 | 42 |
| 114654-11110 | 3 | 9 |
| 114660-01470 | 1 | 31 |
| 114660-21401 | 2 | 21 |
| 114660-76050 | 6 | 42 A |
| 114660-76052 | 11 | 36 |
| 114660-76250 | 6 | 44 A |
| 114660-76251 | 11 | 38 |
| 114660-76530 | 6 | 46 A |
| 114660-76531 | 11 | 40 |
| 114660-76590 | 6 | 70 A |
| 114660-76591 | 6 | 70 A-1 |
| 114660-76592 | 11 | 54 |
| 114662-21592 | 2 | 26 |
| 114668-45102 | 6 | 3 |
| | 11 | 2 |
| 114668-92300 | 10 | 29 |
| 114770-13550 | 4 | 28 |
| 114770-13560 | 4 | 31 |
| 114770-66010 | 6 | 20 |
| 114780-21400 | 2 | 19 |
| 114780-45100 | 6 | 1 |
| 114781-21590 | 2 | 24 |
| 114870-13550 | 4 | 29 |
| 114870-13560 | 4 | 32 |
| 114870-13700 | 4 | 34 A |
| | | 35 A |
| 114870-13710 | 4 | 34 B |
| | | 35 B |
| 114870-13720 | 4 | 34 C |
| | | 35 C |
| 114870-45200 | 6 | 6 |
| | 11 | 3 |
| 114870-53000 | 7 | 27 |
| 114870-66010 | 6 | 21 |
| 114870-76530 | 11 | 42 |
| 114870-76540 | 11 | 43 |
| 114870-76560 | 11 | 44 |
| 114870-76570 | 11 | 45 |
| 114870-76580 | 11 | 52 |
| 114870-76620 | 11 | 48 |
| 114870-76630 | 11 | 49 |

| Parts No. | Fig. No. | Ref. No. |
|--------------|----------|----------|
| 114880-21400 | 2 | 20 |
| 114880-76050 | 6 | 42 |
| 114880-76051 | 11 | 35 |
| 114880-76250 | 6 | 44 |
| 114880-76251 | 11 | 37 |
| 114880-76510 | 6 | 46 |
| 114880-76511 | 11 | 39 |
| 114880-76520 | 11 | 41 |
| 114880-76550 | 11 | 51 |
| 114881-21590 | 2 | 25 |
| 114970-13550 | 4 | 30 |
| 114970-13560 | 4 | 33 |
| 114970-13700 | 4 | 36 A |
| 114970-13710 | 4 | 36 B |
| 114970-66010 | 6 | 22 |
| 119260-11370 | 3 | 33 |
| | | 62 |
| 119620-11180 | 3 | 15 |
| 121450-61520 | 5 | 26 |
| 121750-59890 | 8 | 44 |
| 122710-01220 | 2 | 12 |
| 124060-23100 | 2 | 62 |
| 124550-51350 | 7 | 17 |
| 124722-59050 | 8 | 15 |
| | | 43 |
| | | 45 |
| 124950-01250 | 1 | 17 |
| 129792-22400 | 2 | 44 |
| 135210-61090 | 6 | 19 |
| 160110-02220 | 1 | 57 |
| | | 59 |
| 160120-76940 | 6 | 15 |
| | 11 | 12 |
| 160210-02220 | 1 | 58 |
| 160260-01580 | 4 | 37 A |
| 160260-76520 | 6 | 47 |
| 160260-76530 | 6 | 49 |
| 160260-76540 | 6 | 51 |
| 160260-76550 | 6 | 53 |
| 160260-76560 | 6 | 54 |
| 160260-76580 | 6 | 59 |
| 160260-76590 | 6 | 56 |
| 160260-76600 | 6 | 60 |
| 160260-76620 | 6 | 63 |
| 160260-76630 | 6 | 65 |
| 160290-76570 | 6 | 58 |
| 160330-92730 | 10 | 16 |
| 160710-01760 | 1 | 33 |
| 160710-78710 | 9 | 29 |
| 160810-76520 | 6 | 48 |

| Parts No. | Fig. No. | Ref. No. |
|--------------|----------|----------|
| 160810-76540 | 6 | 52 |
| 160810-76580 | 6 | 57 |
| 160810-76620 | 6 | 64 |
| 160810-76630 | 6 | 66 |
| 160840-76530 | 6 | 50 |
| 160840-76560 | 6 | 55 |
| 160910-01740 | 1 | 34 |
| 160910-76530 | 6 | 50 A |
| 160910-76550 | 6 | 53 A |
| 160910-76560 | 6 | 55 A |
| 160910-76570 | 6 | 58 A |
| 160910-76580 | 6 | 57 A |
| 160910-76620 | 6 | 64 A |
| 160910-76650 | 6 | 66 B |
| 160970-77350 | 9 | 22 |
| 181130-76680 | 6 | 67 |
| 181130-76700 | 6 | 68 |
| 183250-07230 | 10 | 11 |
| 183250-39450 | 1 | 4 |
| 183250-66050 | 6 | 25 |
| 183250-66070 | 6 | 26 |
| 183250-66100 | 6 | 27 |
| 183250-66500 | 6 | 24 |
| 183350-77400 | 9 | 23 |
| 183720-55210 | 6 | 14 |
| | 11 | 11 |
| 22117-060000 | 8 | 33 |
| 22117-080000 | 8 | 32 |
| 22137-080000 | 5 | 28 |
| 22217-060000 | 6 | 68 A |
| 22252-000190 | 2 | 42 |
| 22252-000210 | 2 | 43 |
| 22312-030080 | 2 | 61 |
| 22312-030160 | 3 | 57 |
| | 5 | 5 |
| 22312-080120 | 1 | 43 |
| 22351-020006 | 7 | 21 |
| 22351-030008 | 7 | 22 |
| 22351-040008 | 3 | 39 |
| 22451-060000 | 6 | 36 |
| 22512-040120 | 2 | 17 |
| 22512-050140 | 2 | 18 |
| 23414-120000 | 8 | 16 |
| 23871-010000 | 1 | 73 |
| 23887-120002 | 8 | 17 |
| 24101-062024 | 2 | 71 |
| 24101-062034 | 2 | 72 |
| 24101-062050 | 1 | 61 |
| 24101-062060 | 1 | 62 |
| 24101-062070 | 1 | 63 |

Parts No. Index

| Parts No. | Fig. No. | Ref. No. |
|--------------|----------|----------|
| 24162-152112 | 1 | 64 |
| 24311-000180 | 1 | 35 |
| | 10 | 48 |
| 24341-000150 | 8 | 28 |
| 24341-000224 | 5 | 10 |
| 24423-355008 | 1 | 60 |
| 26106-060082 | 4 | 37 |
| | 6 | 80 |
| | 11 | 57 |
| 26106-060122 | 4 | 40 |
| | 6 | 81 |
| | 81 | -1 |
| | 9 | 24 |
| | 11 | 58 |
| 26106-060162 | 5 | 11 |
| 26106-060252 | 1 | 44 |
| | 4 | 23 |
| 26106-060452 | 6 | 37 |
| 26106-060552 | 3 | 60 |
| 26106-060702 | 3 | 61 |
| 26106-080122 | 1 | 65 |
| 26106-080162 | 4 | 41 |
| 26106-080352 | 1 | 45 |
| 26106-080452 | 3 | 40 |
| | 8 | 34 |
| 26106-100302 | 9 | 25 |
| 26106-100552 | 3 | 41 |
| 26116-060454 | 10 | 23 |
| 26116-080454 | 10 | 24 |
| 26216-080182 | 3 | 42 |
| 26226-060142 | 4 | 24 |
| 26226-060182 | 1 | 46 |
| 26226-060222 | 1 | 47 |
| 26226-060502 | 3 | 43 |
| 26226-060552 | 3 | 44 |
| 26226-060752 | 3 | 45 |
| 26226-080202 | 3 | 46 |
| 26366-060002 | 1 | 48 |
| | 3 | 47 |
| | 4 | 25 |
| | 8 | 36 |
| 26366-080002 | 4 | 42 |
| 26476-060142 | 5 | 6 |
| | 6 | 16 |
| | | 38 |
| | 8 | 37 |
| | 9 | 30 |
| 26476-060202 | 6 | 17 |
| | 9 | 31 |
| | 11 | 13 |

| Parts No. | Fig. No. | Ref. No. |
|--------------|----------|----------|
| 26476-060252 | 6 | 18 |
| | 11 | 14 |
| 26577-060142 | 9 | 32 |
| 26696-100002 | 6 | 32 |
| | | 40 |
| 26716-060002 | 10 | 25 |
| 26716-080002 | 10 | 26 |
| 26717-060002 | 6 | 68 B |
| 26756-060002 | 3 | 37 |
| 26757-060002 | 6 | 33 |
| 27310-060001 | 3 | 17 |
| 27310-070001 | 3 | 18 |
| 28110-100120 | 10 | 17 |
| 28110-140170 | 10 | 18 |
| 28210-000150 | 10 | 19 |
| 43400-500490 | 1 | 49 |
| | 10 | 50 |
| 714250-11570 | 3 | 16 |
| 714250-12560 | 4 | 9 |
| 714250-22502 | 2 | 35 |
| 714250-22542 | 2 | 49 |
| 714250-22550 | 2 | 77 |
| 714250-23600 | 2 | 63 |
| 714250-23610 | 2 | 81 |
| 714250-23620 | 2 | 84 |
| 714250-23703 | 2 | 53 |
| 714250-51710 | 7 | 1 |
| 714250-53101 | 7 | 23 |
| 714250-61500 | 5 | 19 |
| 714250-92602 | 10 | 36 |
| 714268-55721 | 8 | 1 |
| 714270-11660 | 3 | 30 |
| 714271-01560 | 1 | 1 |
| 714280-22580 | 2 | 73 |
| 714280-22620 | 2 | 45 |
| 714280-22720 | 2 | 31 |
| 714288-21730 | 2 | 13 |
| 714350-22502 | 2 | 36 |
| 714350-22542 | 2 | 50 |
| 714350-22550 | 2 | 78 |
| 714350-23600 | 2 | 64 |
| 714350-23610 | 2 | 82 |
| 714350-23620 | 2 | 85 |
| 714350-23704 | 2 | 54 |
| 714350-51710 | 7 | 2 |
| 714350-61500 | 5 | 20 |
| 714350-92602 | 10 | 37 |
| 714368-55721 | 8 | 2 |
| 714370-11660 | 3 | 31 |
| 714371-01560 | 1 | 2 |

| Parts No. | Fig. No. | Ref. No. |
|--------------|----------|----------|
| 714380-22580 | 2 | 74 |
| 714380-22620 | 2 | 46 |
| 714380-22720 | 2 | 32 |
| 714388-21730 | 2 | 14 |
| 714650-12560 | 4 | 10 |
| 714650-22502 | 2 | 37 |
| 714650-22542 | 2 | 51 |
| 714650-22550 | 2 | 79 |
| 714650-23600 | 2 | 65 |
| 714650-23610 | 2 | 83 |
| 714650-23620 | 2 | 86 |
| 714650-23700 | 2 | 55 |
| 714650-51700 | 7 | 3 |
| 714650-53100 | 7 | 25 |
| 714650-61500 | 5 | 21 |
| 714650-92602 | 10 | 38 |
| 714660-14582 | 2 | 3 |
| 714660-22580 | 2 | 75 |
| 714660-22623 | 2 | 47 |
| 714660-22723 | 2 | 33 |
| 714668-55721 | 8 | 3 |
| 714670-11660 | 3 | 32 |
| 714671-01560 | 1 | 3 |
| 714689-21730 | 2 | 15 |
| 714689-28510 | 2 | 69 |
| 714770-28510 | 2 | 67 |
| 714770-28511 | 2 | 67 -1 |
| 714770-28512 | 2 | 67 -2 |
| 714770-61700 | 5 | 12 |
| 714780-14580 | 2 | 1 |
| 714780-14581 | 2 | 1 -1 |
| 714870-28510 | 2 | 68 |
| 714870-53100 | 7 | 24 |
| 714880-14580 | 2 | 2 |
| 714970-61700 | 5 | 13 |
| X211412105 | 9 | 5 |
| X211416603 | 9 | 14 |
| X211427501 | 9 | 18 |
| X21142835 | 9 | 21 |
| X21143215 | 9 | 7 |
| X211445508 | 9 | 13 |
| X21145312 | 9 | 6 |
| X21145352 | 9 | 9 |
| | | 15 |
| X211456013 | 9 | 17 |
| X21145867 | 9 | 20 |
| X211461104 | 9 | 2 |
| X211468005 | 9 | 19 |
| X21147155 | 9 | 4 |
| X211473002 | 9 | 8 |

| Parts No. | Fig. No. | Ref. No. |
|------------|----------|----------|
| X211478006 | 9 | 16 |
| X21148110 | 9 | 3 |
| X21148313 | 9 | 11 |
| X211489001 | 9 | 10 |
| X21149314 | 9 | 12 |