

# PETROL ENGINE DRIVEN PUMPS

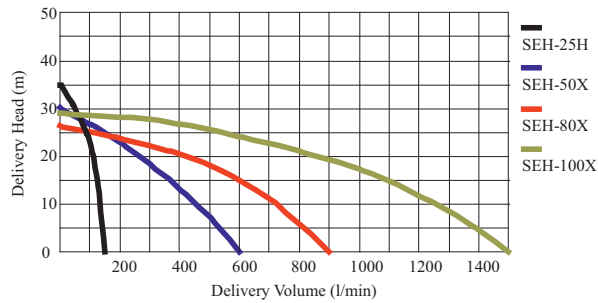
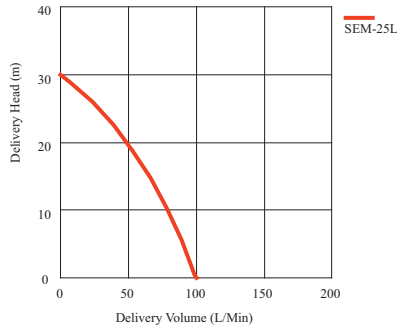
## ENGINE PUMPS, 2 STROKE ENGINE POWERED

**C**

Light 2 stroke engine pumps for multi-purpose use, light, simple to use and reliable.

Model	Engine	Outlet	kg	W x L x H mm	Max l/min	Max Head/m	Code	Price
SEM-25L	*TU22 Mitsubishi	1"	6.5	345 x 260 x 345	100	30	050-003	

\*Changing to TLE20



SEM-25L



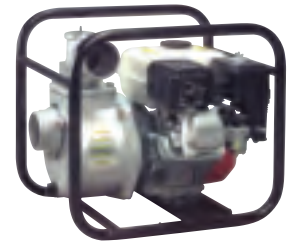
SEH-25H

## ENGINE PUMPS, HONDA POWERED WITH OIL ALERT \*except GXH50

**C**

Ideal for clean and black water applications, construction and agricultural duties, heavy-duty build with iron impeller and volute and carbon/ceramic mechanical seal in full crash frame.

Model	Engine	Outlet	kg	W x L x H mm	Max l/min	Max Head/m	Code	Price
SEH-25H	GXH50*	1"	15	360 x 350 x 430	150	35	050-015	
SEH-50x	GX120	2"	24	506 x 402 x 421	620	30	050-022	
SEH-80x	GX160	3"	32	525 x 399 x 476	900	26	050-032	
SEH-100x	GX240	4"	55	650 x 453 x 660	1450	28	050-038	



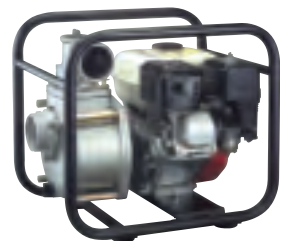
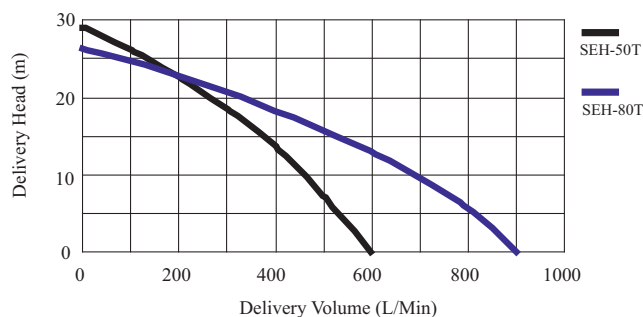
SEH-80X

## SEMI TRASH ENGINE PUMPS, HONDA POWERED WITH OIL ALERT

**C**

Semi Trash pumps with FCD (Spheroidal Graphite Iron Impeller) and volutes and also a SIC mechanical seal for aggressive applications, solids handling ability 8mm.

Model	Engine	Outlet	kg	W x L x H mm	Max l/min	Max Head/m	Code	Price
SEH-50T	GX120	2"	25	493 x 377 x 420	600	29	050-028	
SEH-80T	GX160	3"	35	530 x 423 x 488	900	26	050-048	



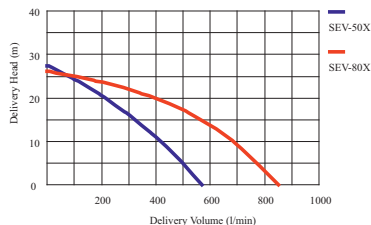
SEH-80T

# PETROL ENGINE DRIVEN PUMPS

## KOSHIN CENTRIFUGAL PUMPS RECOIL START

**C**

Model	Engine	Inlet/Outlet	kg	W x L x H mm	Max l/min	Max Head/m	Code	Price
SEV-50X	KOSHIN K180	2" x 2"	24	380 x 495 x 390	580	28	050-002	
SEV-80X	KOSHIN K180	3" x 2"	32	525 x 400 x 476	850	26	050-004	



KOSHIN SEV



Koshin, One of the worlds biggest and most professional engine pump manufacturers have been renowned for over 50 years for its production partnerships with petrol and diesel engine manufacturers such as Suzuki, Mitsubishi, Robin, Yanmar and Honda. Now The worlds foremost manufacturer has produced 2 new ranges of Engine pumps powered by its own K series engine. The SEV 50 & SEV 80. Clean and black water pumps using the tried and tested Koshin standard pump bodies and components.

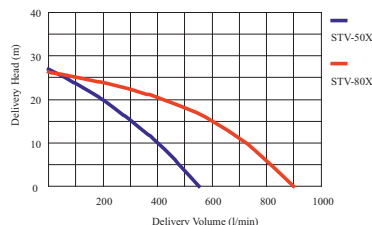
The STV 50X & STV 80X. Semi trash pump set with all hard wearing internals and sic Mechanical seals for longer life. By producing the major components in house the quality can be 100% assured and the prices of the final machines can be kept economical

- Quality 100% guaranteed
- Full spares availability
- Many parts interchangeable with Existing Koshin pumps

## KOSHIN SEMI TRASH PUMPS RECOIL START

**C**

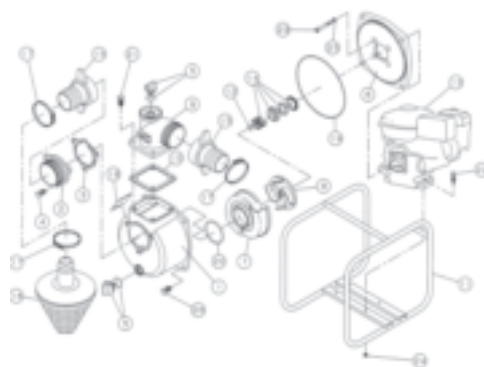
Model	Engine	Inlet/Outlet	kg	W x L x H mm	Max l/min	Max Head/m	Code	Price
STV-50X	KOSHIN K180	2" x 2"	25	493 x 380 x 420	550	27	050-006	
STV-80X	KOSHIN K180	3" x 2"	35	530 x 425 x 488	900	26	050-008	



KOSHIN STV



PART -	1	2	3	5a	5b	6	7	8	9	10	14	15	19	20
MODEL	PUMP CASE	SUCTION FLANGE	CHECK VALVE	DRAIN BUNG	FILLER BUNG	FLANGE BRACKET	VOLUTE	IMPELLER	DELIVERY FLANGE	GASKET	SEAL	HOSE TAILS EACH	O RING CASE	O RING VOLUTE
SEV-50X	0112578 050-684	0112662 050-644	0112665 050-664	0118078 050-604	0118078 050-604	0112579 050-864	0114640 050-744	0113532 050-805	0110556 050-704	0110541 050-724	0110688 050-844	0117026 050-624	0115014 050-784	011279201 050-764
SEV-80X	0112795 050-686	0112797 050-646	0112799 050-666	0118078 050-604	0118079 050-607	0112796 050-866	0114379 050-747	0114376 050-807	0110570 050-706	0110584 050-726	0110664 050-846	0117028 050-626	0115015 050-786	0113989 050-766
STV-50X	0112578 050-684	0112662 050-644	0112665 050-664	0118078 050-604	0118078 050-604	0114027	0115169	0115168	0110556 050-704	0110541 050-724	0115159	0117026	890255043 050-784	011279201 050-764
STV-80X	0112795 050-686	0112797 050-646	0112799 050-666	0118078 050-604	0118079 050-607	0112796 050-866	0115541	0115539	0110570 050-706	0110584 050-726	0115159	0117028 050-626	0115015 050-786	0113989 050-766

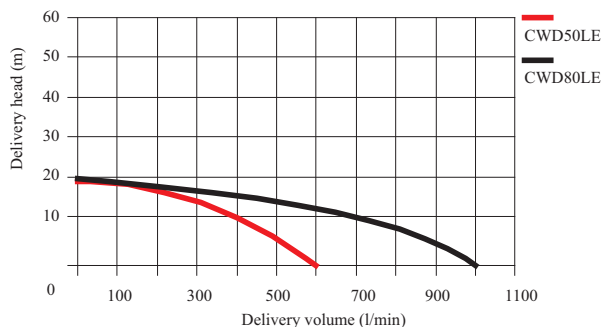


# DIESEL ENGINE DRIVEN PUMPS

## CHANGFA CENTRIFUGAL ENGINE PUMPS

**C**

Model	Engine	Inlet/Outlet	kg	W x L x H mm	Max l/min	Max Head/m	Code	Price
CWD50LE	CF170FE	2" x 2"	55.0	500 x 550 x 690	600	19	CWD50LE	
CWD80LE	CF178FE	3" x 3"	67.0	500 x 650 x 715	1000	19	CWD80LE	



CWD80LE  
CWD50LE

The CWD 50 and 80 are high performance diesel powered centrifugal water pumps from Changfa one of the largest manufacturers of diesel engines in China.

Self priming pump heads for clean and black water with 8 metres suction lift.

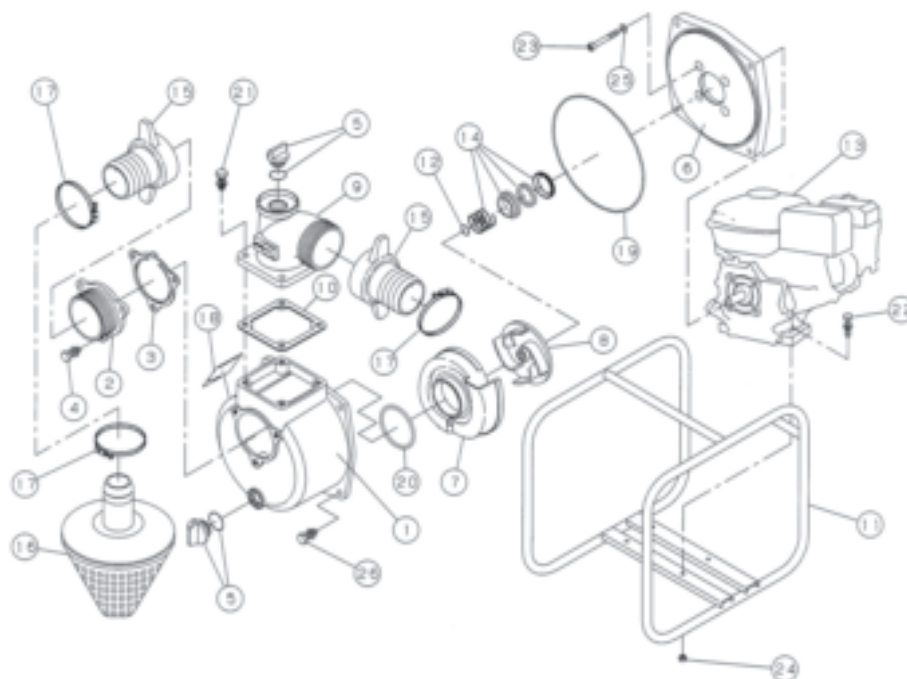
Max heads of 20m and flows of 550 and 950 litres per min at 3 metres head.

Single cylinder 5 and 7 Hp electric start air cooled engines with long run fuel tank and battery make these engines easy to start and run.

Full crash frame protection.

Can be supplied with wheel kits as optional extra.

PART -	1	2	3	5a	5b	6	7	8	9	10	14	15	19	20
MODEL	PUMP CASE	SUCTION FLANGE	CHECK VALVE	DRAIN BUNG	FILLER BUNG	FLANGE BRACKET	VOLUTE	IMPELLER	DELIVERY FLANGE	GASKET	SEAL	HOSE TAILS EACH	O RING CASE	O RING VOLUTE
CWD50	50-10002	50-10013	50-12000	50-10014	50-10014	50-10001	50-10003	50-10004	50-10007	50-10008	50-11000	050-624	50-20001	50-20003
CWD80	80-10002	80-10013	80-12000	50-10014	50-10014	80-10001	80-10003	80-10004	80-10007	80-10008	50-11000	050-626	50-20001	80-20012

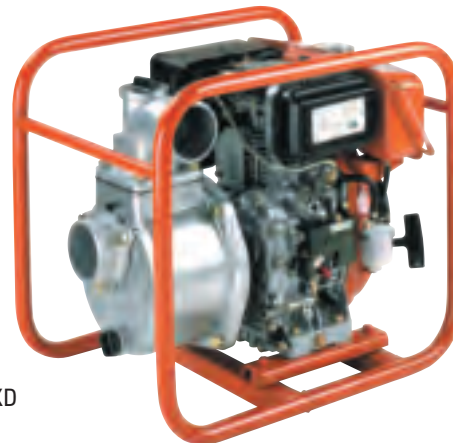
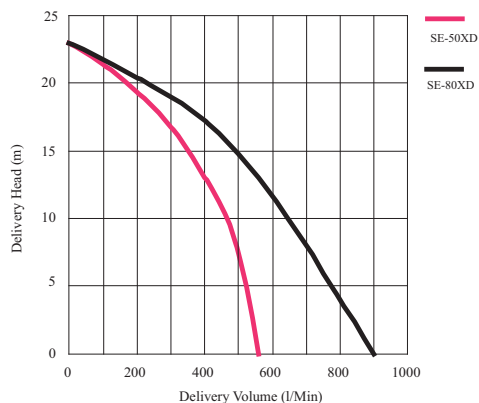


# DIESEL ENGINE DRIVEN PUMPS

## DIESEL POWERED CENTRIFUGAL PUMPS RECOIL START

**C**

Model	Engine	Outlet	kg	W x L x H mm	Max l/min	Max Head/m	Code	Price
SE-50XD	ROBIN DY23	2"	48	583 x 423 x 515	560	23	050-070	
SE-80XD	ROBIN DY23	3"	51	583 x 423 x 515	900	23	050-075	



SE-80XD

Powered By SUBARU

## DIESEL POWERED CENTRIFUGAL PUMPS RECOIL START

C/W FULL CRASH FRAME & WHEEL KIT

**C**

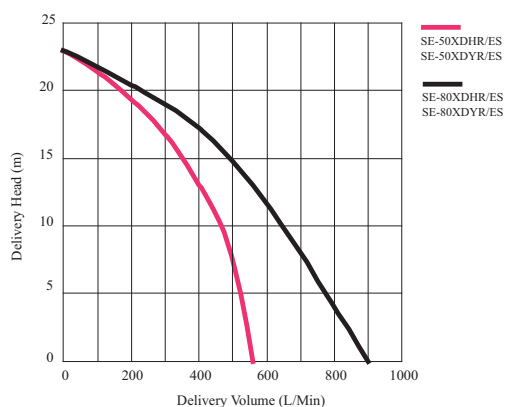
Model	Engine	Outlet	kg	W x L x H mm	Max l/min	Max Head/m	Code	Price
SE-50XDHR	HATZ 1B20	2"	55	700 x 800 x 710	560	23	050-070HR	
SE-80XDHR	HATZ 1B20	3"	58	700 x 800 x 710	900	23	050-075HR	

## DIESEL POWERED CENTRIFUGAL PUMPS ELECTRIC START

C/W FULL CRASH FRAME & WHEEL KIT

**C**

Model	Engine	Outlet	kg	W x L x H mm	Max l/min	Max Head/m	Code	Price
SE-50XDHES	HATZ 1B20	2"	65	700 x 800 x 710	560	23	050-070HES	
SE-80XDHES	HATZ 1B20	3"	68	700 x 800 x 710	900	23	050-075HES	



SE-50XDHES

Shown with Hatz engine  
Also available with Yanmar engine  
subject to availability

powered by HATZ

# ENGINE DRIVEN PUMPS

## HIGH PRESSURE PUMPS, HONDA & MITSUBISHI ENGINE POWERED

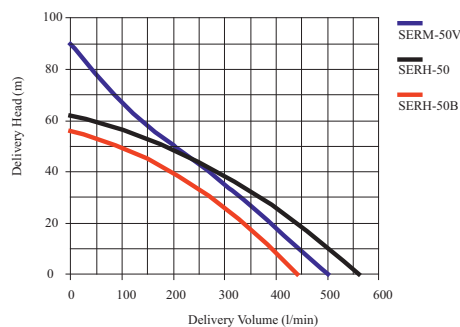
**C**

Petrol Engine High Pressure Pump Sets.

Model	Engine	Inlet/Outlet	kg	W x L x H mm	Max l/min	Max Head/m	Code	Price
SERM-50V	MITG GM182	2"x2"	34	565 x 460 x 483	500	90	050-041	
SERH-50B	HONDA GX160	2"x2"	38	620 x 380 x 533	400	60	050-042	
SERH-50	HONDA GX240	2 1/2"x2"	49	595 x 420 x 560	550	70	050-072	



SERM-50V



SERH-50B

## DIESEL POWERED HIGH PRESSURE PUMPS RECOIL START

C/W FULL CRASH FRAME & WHEEL KIT

**C**

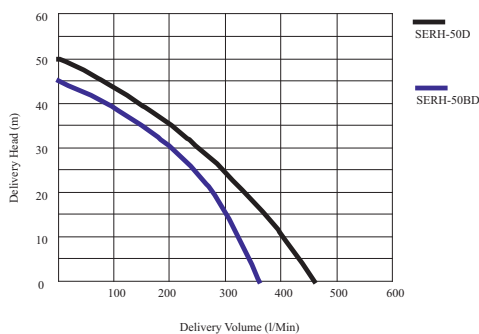
Model	Engine	Inlet/Outlet	kg	W x L x H mm	Max l/min	Max Head/m	Code	Price
SERH-50BDHR	HATZ 1B20	2"x2"	55	700 x 800 x 710	350	45	050-043HR	
SERH-50DHR	HATZ 1B30	2 1/2"x2"	60	700 x 800 x 710	450	49	050-044HR	

## DIESEL POWERED HIGH PRESSURE PUMPS ELECTRIC START

C/W FULL CRASH FRAME & WHEEL KIT

**C**

Model	Engine	Inlet/Outlet	kg	W x L x H mm	Max l/min	Max Head/m	Code	Price
SERH-50BDHES	HATZ 1B20	2"x2"	60	700 x 800 x 710	350	45	050-043HES	
SERH-50DHES	HATZ 1B30	2 1/2"x2"	65	700 x 800 x 710	450	49	050-044HES	



SERH-50BDHES  
Available with Yanmar engines  
subject to availability



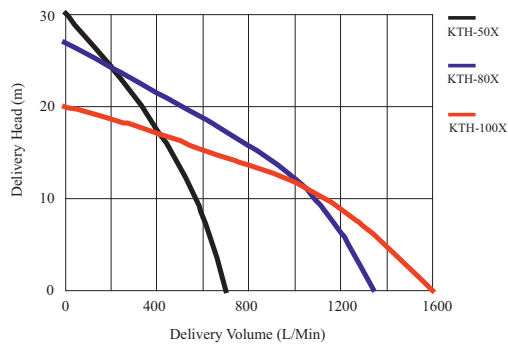
# ENGINE DRIVEN PUMPS

## TRASH DUTY ENGINE PUMPS, HONDA POWERED WITH OIL ALERT

**C**

Petrol engine trash duty pumps for sewage and muck. Large easy off front cover for cleaning SIC mechanical seals and Hi Chrome Impeller and Spheroidal Graphite Iron volute and solid handling up to 2"-20mm / 3" 27mm / 4"-30mm.

Model	Engine	Inlet/Outlet	kg	W x L x H mm	Max l/min	Max Head/m	Code	Price
KTH-50x	GX160	2"	51	656 x 498 x 524	700	30	050-074	
KTH-80x	GX240	3"	63	721 x 516 x 585	1340	27	050-076	
KTH-100x	GX340	4"	85	790 x 580 x 675	1600	20	050-078	



KTH-50X



## DIESEL POWERED TRASH PUMPS – RECOIL START

C/W FULL CRASH FRAME & WHEEL KIT

**C**

Heavy duty Koshin trash duty pumps mounted to Hatz diesel engines. For very dirty water and trash duty. Solids handling up to: 2" - 20mm / 3" - 27mm / 4" - 30mm. SIC Mechanical seals and Hi Chrome impeller and Spheroidal Graphite Iron volute.

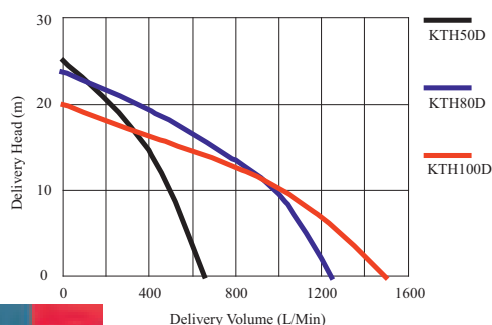
Model	Engine	Inlet/Outlet	kg	W x L x H mm	Max l/min	Max Head/m	Code	Price
KTH-50DHR	Hatz1B20	2"x2"	54	700 x 800 x 710	650	25	050-052HR	
KTH-80DHR	Hatz1B30	3"x3"	99	700 x 800 x 710	1250	24	050-082HR	
KTH-100DHR	Hatz1B40	4"x4"	140	700 x 1300 x 820	1550	20	050-087HR	

## DIESEL POWERED TRASH PUMPS – ELECTRIC START

C/W FULL CRASH FRAME & WHEEL KIT

**C**

Model	Engine	Inlet/Outlet	kg	W x L x H mm	Max l/min	Max Head/m	Code	Price
KTH-50DHES	Hatz1B20	2"x2"	54	700 x 800 x 710	650	25	050-052HES	
KTH-80DHES	Hatz1B30	3"x3"	99	700 x 800 x 710	1250	24	050-082HES	
KTH-100DHES	Hatz1B40	4"x4"	140	700 x 1300 x 820	1550	20	050-087HES	



KTH-80DHES

Available with Yanmar engines  
subject to availability

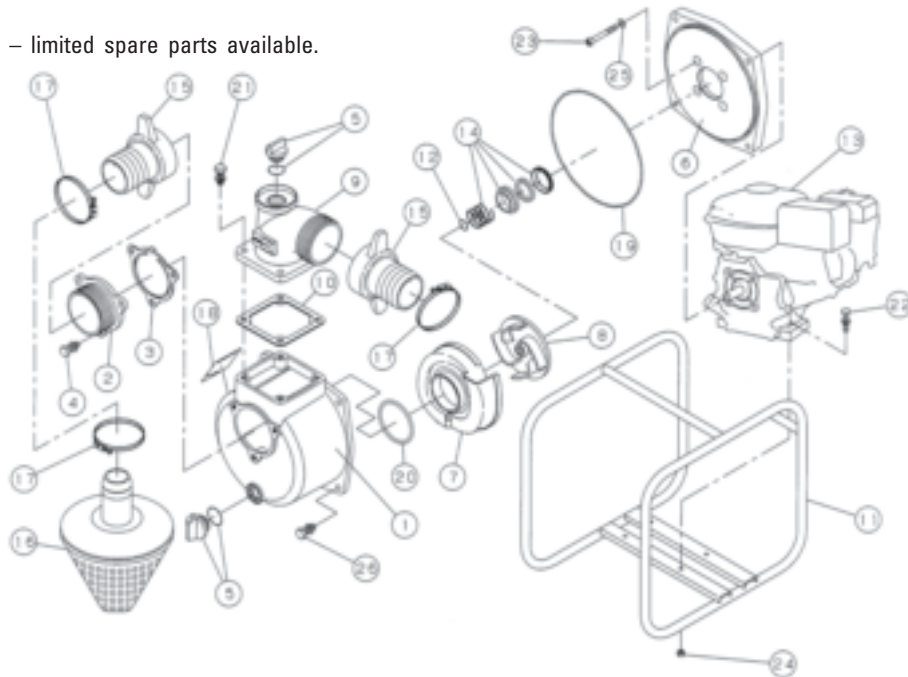


# COMMON SPARE PARTS FOR ENGINE PUMPS

C

PART -	1	2	3	5a	5b	6	7	8	9	10	14	15	19	20
MODEL	PUMP CASE	SUCTION FLANGE	CHECK VALVE	DRAIN BUNG	FILLER BUNG	FLANGE BRACKET	VOLUTE	IMPELLER	DELIVERY FLANGE	GASKET	SEAL	HOSE TAILS EACH	O RING CASE	O RING VOLUTE
SE-25L ECO-25GR NEW	0113329 050-960	0113325 050-966	0113326 050-967	0148010 050-600	0118450 050-973	0114992 050-963	0112528 050-964	0114993 050-965	N/A	N/A	0140273 050-968	0348015 050-952	890255031 050-969	889855042 050-972
SEM-25L TU-22	0113329 050-960	0113325 050-966	0113326 050-967	0148010 050-600	0118450 050-973	0115987	0115986	0115985	N/A	N/A	0116054	0348015 050-952	890255031 050-969	889855042 050-972
*SCR-25R EY08	200200100	200200660	200900140	200500040	200500040	200200430	200210160	200210150	200200650	200800080	201100021	0348015 050-952	200900340	200900230
*SEH-25 G100	0113330 050-940	0114002 050-947	0113328 050-948	0118078 050-604	0118078 050-604	0110579 050-942	0114225 050-944	0111447 050-946	0111449 050-949	0110593 050-950	0110673 050-951	0348015 050-952	890255043 050-953	889855048 050-954
SEH-25 GXH-50	0113330 050-940	0114002 050-947	0113328 050-948	0118078 050-604	0118078 050-604	0116926	0116994	0116937	0111449 050-949	0110593 050-950	0110685 050-842	0348015 050-952	890255043 050-953	889855048 050-954
*SEH-50X GX120- OLD	0112578 050-684	0112662 050-644	0112665 050-664	0118078 050-604	0118078 050-604	0112579 050-864	0113175 050-743	0111780 050-804	0110556 050-704	0110541 050-724	0110688 050-844	0117026 050-624	0115014 050-784	011279201 050-764
*SEH-50X GX120- NEW	0112578 050-684	0112662 050-644	0112665 050-664	0118078 050-604	0118078 050-604	0112579 050-864	0114640 050-744	0113532 050-805	0110556 050-704	0110541 050-724	0110688 050-844	0117026 050-624	0115014 050-784	011279201 050-764
SEH-50X GX120 BEJ	0112578 050-684	0112662 050-644	0112665 050-664	0118078 050-604	0118078 050-604	0115268	0114640 050-744	0116616	0110556 050-704	0110541 050-724	0114090	0117026 050-624	0115014 050-784	011279201 050-764
*SEH-80X GX-160 OLD	0112795 050-686	0112797 050-646	0112799 050-666	0118078 050-604	0118079 050-607	0112796 050-866	0113176 050-746	0110532 050-806	0110570 050-706	0110584 050-726	0110664 050-846	0117028 050-626	0115015 050-786	0113989 050-766
*SEH-80X GX-160 NEW	0112795 050-686	0112797 050-646	0112799 050-666	0118078 050-604	0118079 050-607	0112796 050-866	0114379 050-747	0114376 050-807	0110570 050-706	0110584 050-726	0110664 050-846	0117028 050-626	0115015 050-786	0113989 050-766
SEH-80X GX-160 BEJ	0112795 050-686	0112797 050-646	0112799 050-666	0118078 050-604	0118079 050-607	0115269	0114379 050-747	0116617	0110570 050-706	0110584 050-726	0114090	0117028 050-626	0115015 050-786	0113989 050-766
SEH-50T GX-120	0112578 050-684	0112662 050-644	0112665 050-664	0118078 050-604	0118078 050-604	0114027	0115169	0115168	0110556 050-704	0110541 050-724	0115159	0117026 050-624	0115014 050-784	011279201 050-764
SEH-80T GX-160	0112795 050-686	0112797 050-646	0112799 050-666	0118078 050-604	0118079 050-607	0112796 050-866	0115541	0115539	0110570 050-706	0110584 050-726	0115159	0117028 050-626	0115015 050-786	0113989 050-766
SERH-50B GX160	0114184 050-692	0114003 050-650	0112799 050-666	0118079 050-607	0118078 050-604	0110568 050-870	0112818 050-750	0112861 050-810	0114209 050-712	0110584 050-726	0110863 050-846		0115016 050-792	0113989 050-766
SERH-50 GX240	0114184 050-692	0114004 050-652	0112799 050-666	0118079 050-607	0118078 050-604	0110722 050-872	0112819 050-752	0112862 050-812	0114209 050-712	0110584 050-726	0110862 050-852		0115016 050-792	0113989 050-766

\*Discontinued models – limited spare parts available.

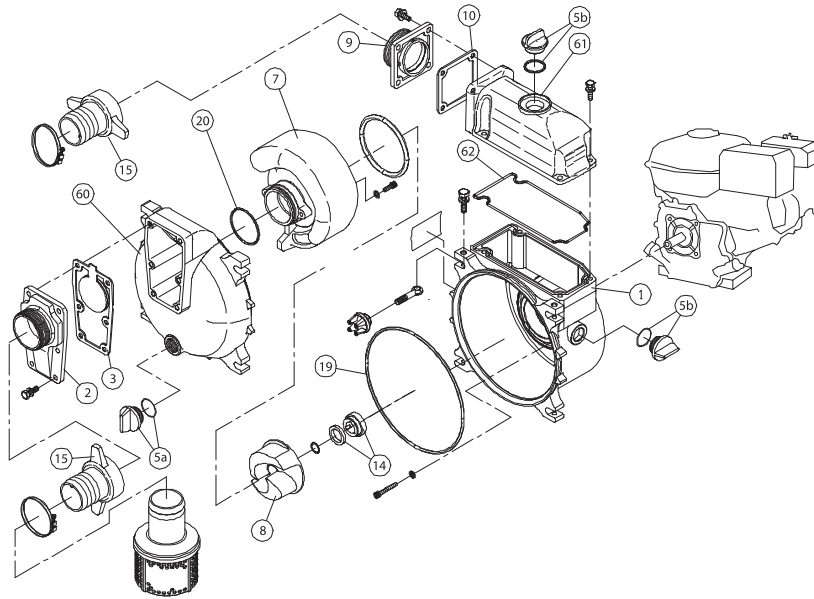


# COMMON SPARE PARTS FOR ENGINE PUMPS

## TRASH PUMP SPARES

**C**

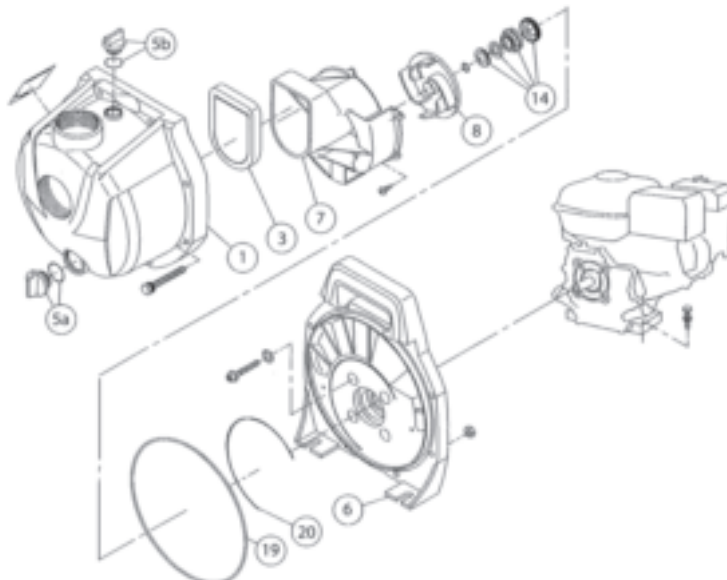
PART -	1	2	3	5a	5b	6	7	8	9	10	14	19	20	60	61	62
MODEL	PUMP CASE	SUCTION FLANGE	CHECK VALVE	DRAIN BUNG	FILLER BUNG	FLANGE BRACKET	VOLUTE	IMPELLER	DELIVERY FLANGE	GASKET	SEAL	O RING CASE	O RING VOLUTE	FRONT COVER	DELIVERY HOUSING	HEAD PACKING
KTH-50X	0115446	0115839	0115780	0118079 050-607	0118450 050-973	N/A	0115489	0115447	0115840	0115490	0115159	0115579	0115676	0115545	0115445	0115548
KTH-80X	0115546	0111573	0115692	0118079 050-607	0118450 050-973	N/A	0115559	0115558	0115838	0110584	0115678	0115579	0115676	0115545	0115547	0115548
KTH-100X	0116150	0116268	0118261	0118079 050-607	0118450 050-973	N/A	0116488	0115626	0116188	0110750	0115678	0115579	0116270	0116490	0116148	0115548



## THERMOPLASTIC PUMP SPARES

**C**

PART -	1	2	3	5a	5b	6	7	8	9	10	14	19	20	60	61	62
MODEL	PUMP CASE	SUCTION FLANGE	CHECK VALVE	DRAIN BUNG	FILLER BUNG	FLANGE BRACKET	VOLUTE	IMPELLER	DELIVERY FLANGE	GASKET	SEAL	O RING CASE	O RING VOLUTE			
PGH-50	0130024	N/A	0130009	050-604	050-604	0130002	0130003	0130004	N/A	N/A	0130011	0130005	0130008	N/A	N/A	N/A





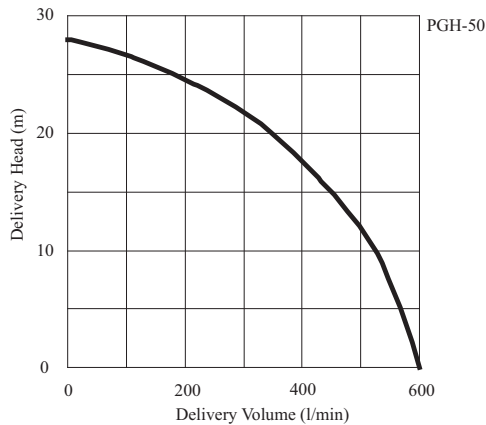
# ENGINE DRIVEN PUMPS

## PETROL POWERED THERMOPLASTIC PUMPS RECOIL START C/W FULL CRASH FRAME & WHEEL KIT

**C**

Thermoplastic pumps with oil alert for salt water chemicals and fertilizers etc.

Model	Engine	Inlet/Outlet	kg	W x L x H mm	Max l/min	Max Head/m	Code	Price
PGH-50	HONDA GX120	2" x 2"	22	506 x 402 x 476	600	28	050-024	



PGH-50

## DIESEL POWERED THERMOPLASTIC PUMPS RECOIL START C/W FULL CRASH FRAME & WHEEL KIT

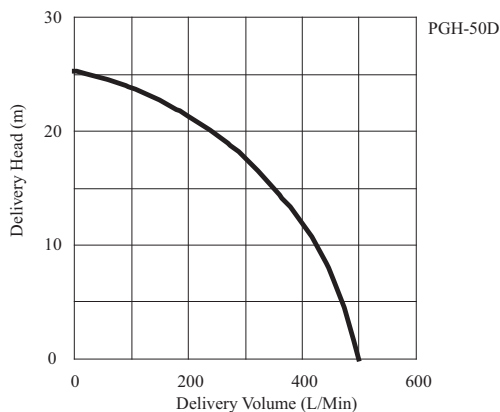
**C**

Model	Engine	Inlet/Outlet	kg	W x L x H mm	Max l/min	Max Head/m	Code	Price
PGH-50D	ROBIN DY23	2" x 2"	50	700 x 800 x 710	480	22	050-024D-DY23	
PGH-50DHR	HATZ 1B20	2" x 2"	58	700 x 800 x 710	480	22	050-024DHR	

## DIESEL POWERED THERMOPLASTIC PUMPS ELECTRIC START C/W FULL CRASH FRAME & WHEEL KIT

**C**

Model	Engine	Inlet/Outlet	kg	W x L x H mm	Max l/min	Max Head/m	Code	Price
PGH-50DHES	HATZ 1B20	2" x 2"	58	700 x 800 x 710	480	22	050-024DHES	



PGH-50DHES

Available with Yanmar engine  
subject to availability



# ENGINE DRIVEN PUMPS

## DIESEL ENGINE POWERED DIESEL TRANSFER PUMPS RECOIL START C/W FULL CRASH FRAME & WHEEL KIT

**C**

MODEL	ENGINE	INLET/ OUTLET	KG	H x W x L	MAX l/min	MAX Head/m	CODE	PRICE
RED B2KQA HR	Hatz1B20	2"x2"	50	820x700x1030	420	20	070-200HR	
RED B3KQA HR	Hatz1B30	3"x3"	60	820x700x1030	870	17	070-300HR	

## DIESEL ENGINE POWERED DIESEL TRANSFER PUMPS ELECTRIC START C/W FULL CRASH FRAME & WHEEL KIT

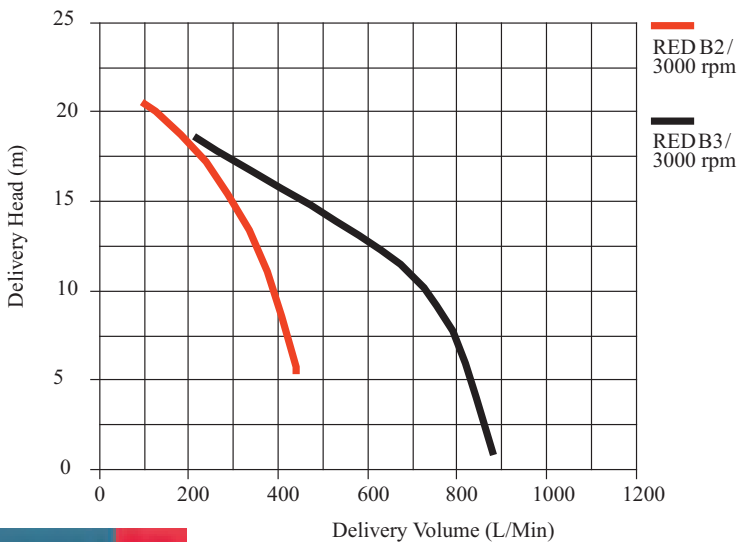
**C**

MODEL	ENGINE	INLET/ OUTLET	KG	H x W x L	MAX l/min	MAX Head/m	CODE	PRICE
RED B2KQA HE	Hatz1B20	2"x2"	50	820x700x1030	420	20	070-200HE	
RED B3KQA HE	Hatz1B30	3"x3"	60	820x700x1030	870	17	070-300HE	

Heavy duty diesel powered self priming diesel transfer pump in full crash frame. Complete with spark arrestor. Viton seals and o rings.



RED B2KQA HE



Available with Yanmar engine subject to availability



# ENGINE DRIVEN PUMPS

## HONDA PETROL POWERED DIAPHRAGM PUMPS CRASH FRAME MOUNTED

**C**

Ideal for very dirty water with solids and suitable for running on snore.  
Powered by oil alert engines and mounted in full crash frames. Optional trolley available.

Model	Engine	Inlet/ Outlet	kg	W x L x H mm	Max l/min	Max Head/m	Code	Price
SMD50HX	GX120	2"	37.5	614 x 370 x 510	126	17	060-820	
SMD80HX	GX160	3"	45	660 x 420 x 540	250	18	060-822	

## HONDA PETROL POWERED DIAPHRAGM PUMPS TROLLEY MOUNTED

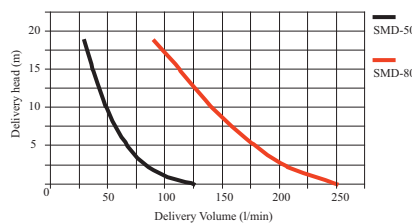
**C**

Ideal for very dirty water with solids and suitable for running on snore.  
Powered by oil alert engines and mounted in full crash frames.

Model	Engine	Inlet/ Outlet	kg	W x L x H mm	Max l/min	Max Head/m	Code	Price
SMD50HT	GX120	2"	44	700 x 420 x 540	126	17	060-820WK	
SMD80HT	GX160	3"	60	700 x 420 x 540	250	18	060-822WK	



SMD50X IN CRASH FRAME



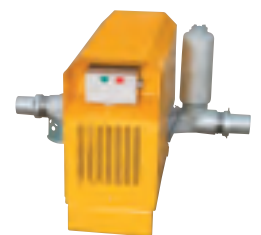
SMD50HT TROLLEY MOUNTED

## ELECTRIC DIAPHRAGM PUMPS

**C**

Ideal for very dirty water with solids and suitable for dry running.  
Electric drive via gearbox for ease of operation and simple control by means of panel and floats.

Model	Motor	Inlet/ Outlet	kg	W x L x H mm	Max l/min	Max Head/m	Code	Price
DP2E 230v	2hp 230v	2"	62	700 x 850 x 600	125	16	060-847	
DP2E 110v	2hp 110v	2"	62	700 x 850 x 600	125	16	060-848	
DP2E 415v	2hp 415v	2"	62	700 x 850 x 600	125	16	060-849	
DP3E 230v	2hp 230v	3"	65	700 x 850 x 600	250	18	060-846	
DP3E 110v	2hp 110v	3"	65	700 x 850 x 600	250	18	060-842	
DP3E 415v	2hp 415v	3"	65	700 x 850 x 600	250	18	060-844	



DP2E



DP3E  
shown without cover fitted

# ENGINE DRIVEN PUMPS

## DIESEL POWERED DIAPHRAGM PUMPS RECOIL START

**C**

Ideal for very dirty water with solids and suitable for running on snore.  
Powered by Hatz or Yanmar engines and wheeled chassis mounted.

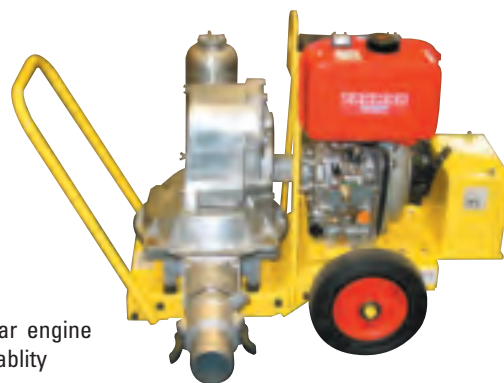
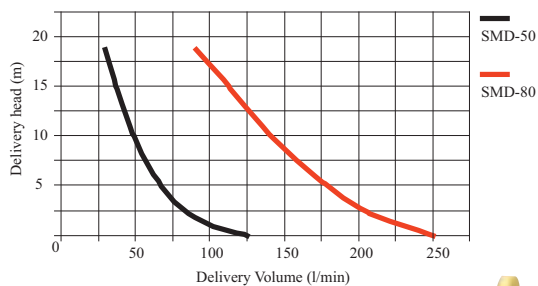
Model	Engine	Inlet/Outlet	kg	WxLxH mm	Max l/min	Max Head/m	Code	Price
DP2HR	Hatz 1B20	2"	72	770 x 1000 x 600	126	17	060-813	
DP3HR	Hatz 1B20	3"	76	770 x 1000 x 600	250	18	060-824	

## DIESEL POWERED DIAPHRAGM PUMPS ELECTRIC START

**C**

Ideal for very dirty water with solids and suitable for running on snore.  
Powered by Hatz or Yanmar engines and wheeled chassis mounted.

Model	Engine	Inlet/Outlet	kg	WxLxH mm	Max l/min	Max Head/m	Code	Price
DP2HE	Hatz 1B20	2"	73	770 x 1000 x 600	126	17	060-827	
DP3HE	Hatz 1B20	3"	83	770 x 1000 x 600	250	18	060-828	



# RUBBER SUCTION HOSE

## 10 BAR RUBBER WATER SUCTION/DELIVERY HOSE ASSEMBLIES WIRE ARMoured HOSES CW COUPLINGS

**A**

SIZE	LENGTH	Kg	WORKING BAR	CODE	PRICE
3"	6 metres	25	10	030-470	
4"	6 metres	34	10	030-475	
4"	10 metres	57	10	030-477	
6"	3 metres	34	10	030-480	
6"	10 metres	114	10	030-482	
8"	3 metres	62	10	030-485	

Interchangeable lever-lock couplings



## HOSE KITS INCLUDING CAMS AND CLIPS

**A**

KIT	CODE	PRICE
10m 2" layflat hose & 6m 2" suction hose	HK2-10	
10m 2" layflat hose & 6m 2" suction hose, Cams C & E with 2 x bolt clamps	HK2-10 & 2CAMS	
10m 2" layflat hose & 6m 2" suction hose, Cams A, C, D & E with 4 x bolt clamps	HK2-10 & 4CAMS	
20m 2" layflat hose & 6m 2" suction hose	HK2-20	
10m 3" layflat hose & 6m 3" suction hose	HK3-10	
10m 3" layflat hose & 6m 3" suction hose, Cams C & E with 2 x bolt clamps	HK3-10 & 2CAMS	
10m 3" layflat hose & 6m 3" suction hose, Cams A, C, D & E with 4 x bolt clamps	HK3-10 & 4CAMS	
20m 3" layflat hose & 6m 3" suction hose	HK3-20	
20m 3" layflat hose & 6m 3" suction hose, Cams A, C, D & E with 4 x bolt clamps	HK3-20 & 4CAMS	

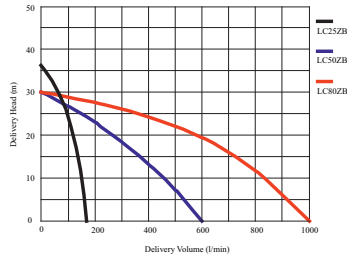


# ENGINE DRIVEN PUMPS, LONCIN POWERED

## CENTRIFUGAL ENGINE PUMPS WITH OIL ALERT

**C**

Model	Engine	Inlet/Outlet	kg	W x L x H mm	Max l/min	Max Head/m	Code	Price
LC 25 ZB	LONCIN LC152	1"	15	250x380x380	150	36	LC 25ZB	
LC 50 ZB	LONCIN G160	2"	24	430x550x385	600	30	LC 50ZB	
LC 80 ZB	LONCIN G160	3"	29	430x550x465	1000	30	LC 80ZB	

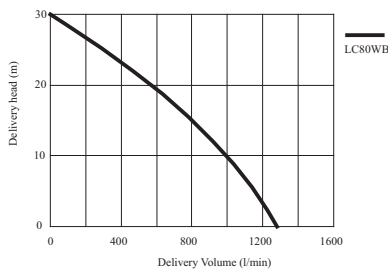


LC50 ZB

## TRASH DUTY ENGINE PUMP WITH OIL ALERT

**C**

Model	Engine	Inlet/Outlet	kg	W x L x H mm	Max l/min	Max Head/m	Code	Price
LC 80WB	LONCIN G200	3"	36	480x590x440	1250	30	LC 80WB	

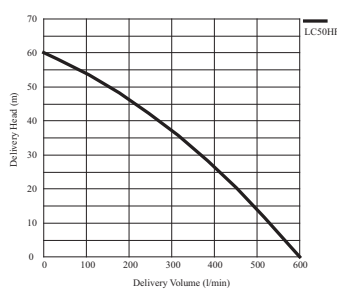


LCWB30

## HIGH PRESSURE ENGINE PUMP WITH OIL ALERT

**C**

Model	Engine	Inlet/Outlet	kg	W x L x H mm	Max l/min	Max Head/m	Code	Price
LC 50HP	LONCIN G200	2"	36	390 x 475 x 400	600	60	LC 50HP	

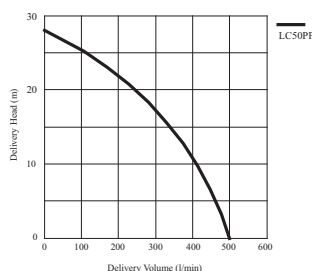


LC50HP

## THERMOPLASTIC CENTRIFUGAL ENGINE PUMP WITH OIL ALERT

**C**

Model	Engine	Inlet/Outlet	kg	W x L x H mm	Max l/min	Max Head/m	Code	Price
LC 50PP	LONCIN G160	2"	36	430x550x380	500	28	LC 50PP	



LC50PP